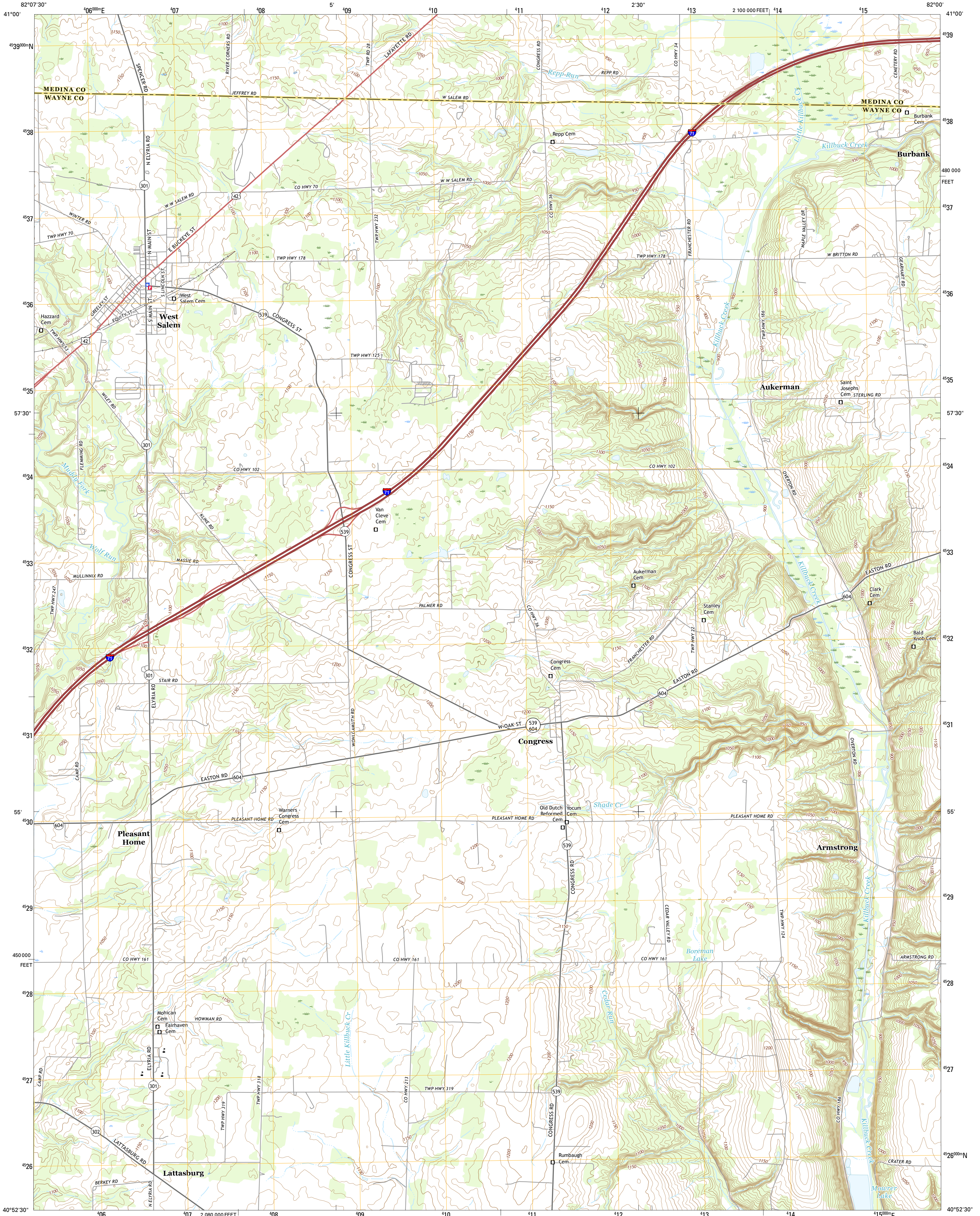




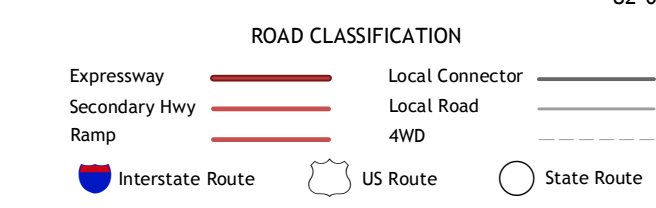
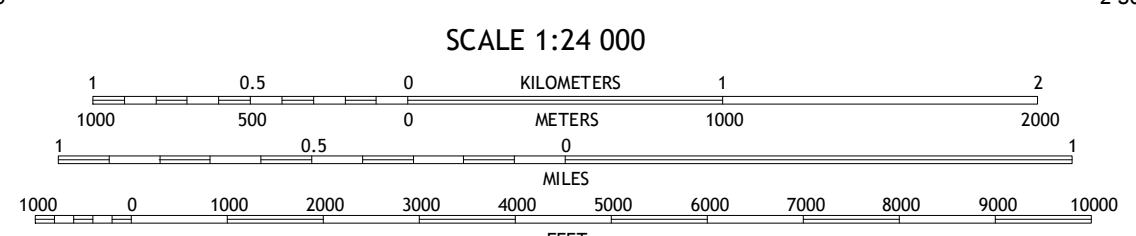
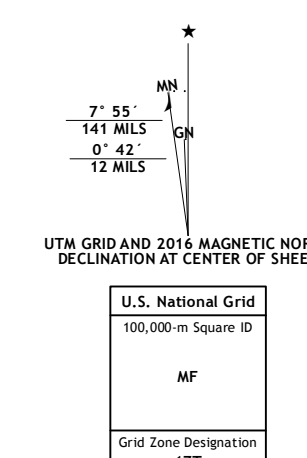
U.S. DEPARTMENT OF THE INTERIOR
U.S. GEOLOGICAL SURVEY



WEST SALEM QUADRANGLE
OHIO
7.5-MINUTE SERIES



Produced by the United States Geological Survey
North American Datum of 1983 (NAD83)
World Geodetic System of 1984 (WGS84). Projection and
1 000-meter grid: Universal Transverse Mercator, Zone 17T
10 000-foot ticks: Ohio Coordinate System of 1983 (north zone)
This map is not a legal document. Boundaries may be
generalized for this map scale. Private lands within government
reservations may not be shown. Obtain permission before
entering private lands.



1	2	3
4	5	6
7	8	

ADJOINING QUADRANGLES

1 Sullivan
2 Lodi
3 Westfield Center
4 Polk
5 Creston
6 Jeromesville
7 New Pittsburg
8 Wooster

WEST SALEM, OH
2016

