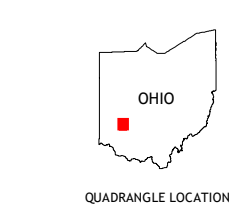
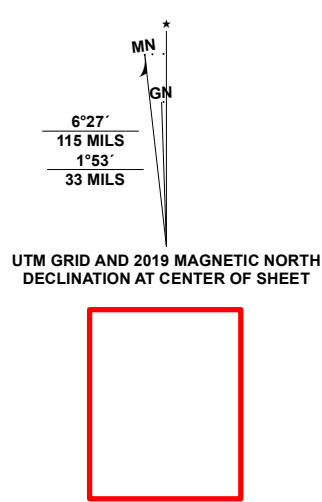


Produced by the United States Geological Survey

North American Datum of 1983 (NAD83)
World Geodetic System of 1984 (WGS84). Projection and
1 000-meter grid/Universal Transverse Mercator, Zone 16S17S
This map is not a legal document. Boundaries may be
generalized for this map scale. Private lands within government
reservations may not be shown. Obtain permission before
entering private lands.
Imagery.....NAIP, September 2015 - October 2015
Roads.....U.S. Census Bureau, 2016
Names.....GNIS, 1979 - 2019
Hydrography.....National Hydrography Dataset, 2000 - 2019
Contours.....National Elevation Dataset, 2010
Boundaries.....Multiple sources; see metadata file 2017 - 2018
Public Land Survey System.....BLM, 2017
Wetlands.....FWS National Wetlands Inventory 2004 - 2007



ADJOINING QUADRANGLES

1	2	3
4	5	6
7	8	

1 Fairborn
2 Yellow Springs
3 Clifton
4 Bellbrook
5 Cedarville
6 Waynesville
7 New Burlington
8 Port William

ROAD CLASSIFICATION

	Expressway		Local Connector
	Secondary Hwy		Local Road
	Ramp		4WD
	Interstate Route		US Route
	State Route		State Route

