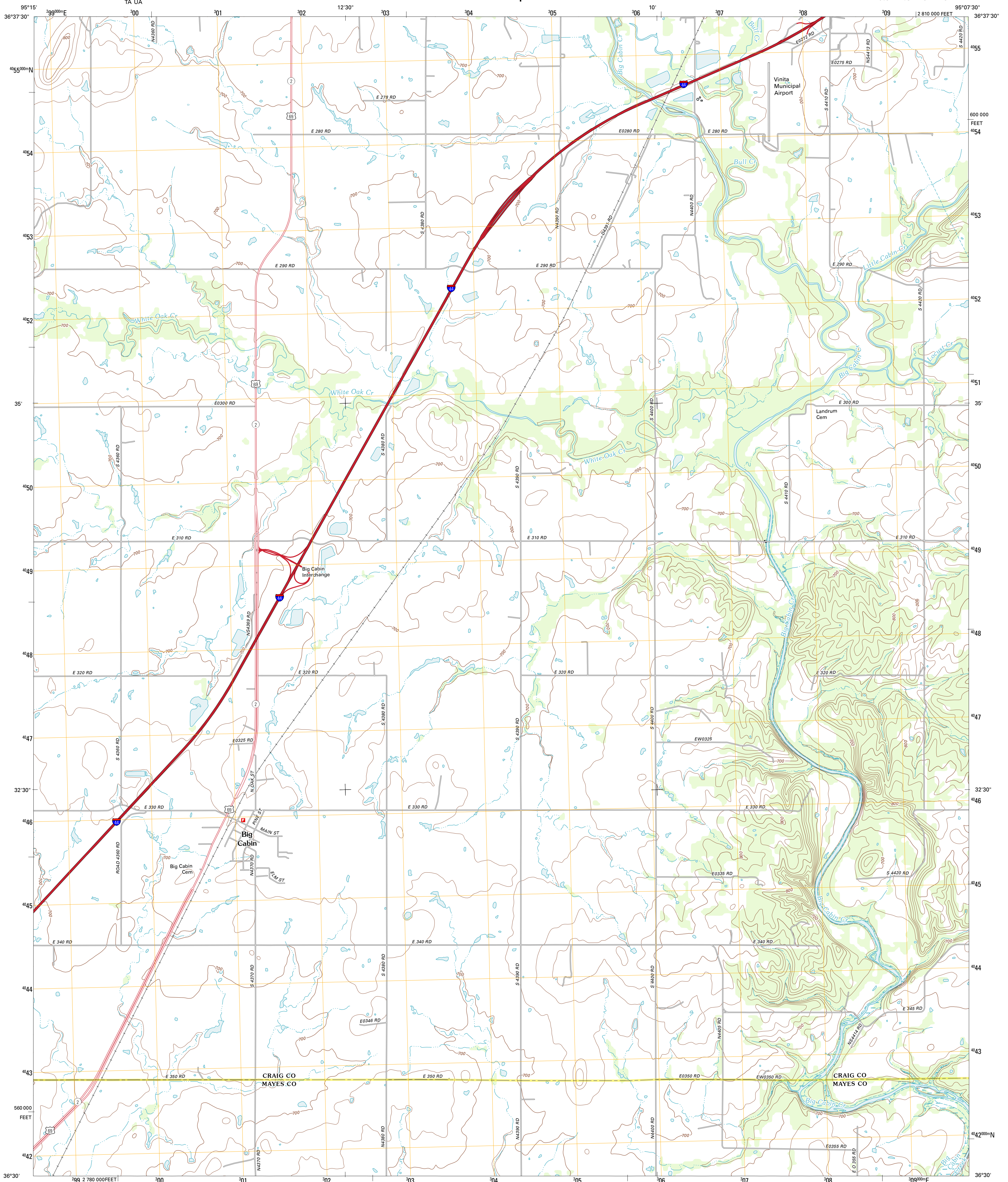




U.S. DEPARTMENT OF THE INTERIOR
U. S. GEOLOGICAL SURVEY

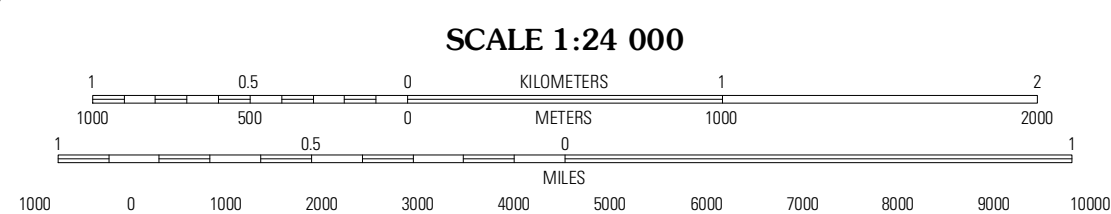
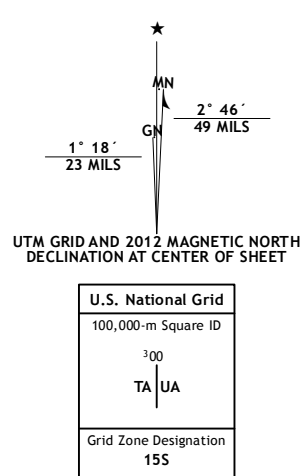


BIG CABIN QUADRANGLE
OKLAHOMA
7.5-MINUTE SERIES

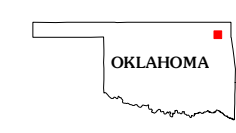


Produced by the United States Geological Survey
North American Datum of 1983 (NAD83)
©2006-2011 TomTom
World Geodetic System of 1984 (WGS84). Projection and
1 000-meter grid. Universal Transverse Mercator, Zone 15S
10 000-foot ticks: Oklahoma Coordinate System of 1983
(north zone)

Imagery: NAIP, August 2010
Roads: ©2006-2011 TomTom
Names: GNSI, 2012
Hydrography: National Hydrography Dataset, 2010
Contours: National Elevation Dataset, 2008
Boundaries: Census, IBWC, IBC, USGS, 1972 - 2012



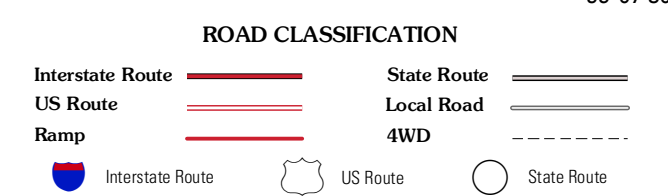
SCALE 1:24 000
CONTOUR INTERVAL 20 FEET
NORTH AMERICAN VERTICAL DATUM OF 1988
This map was produced to conform with the
National Geospatial Program US Topo Product Standard, 2011.
A metadata file associated with this product is draft version 0.6.6



QUADRANGLE LOCATION

Estrella	Vinita	Vinita NE
White Oak	Big Cabin	Ketchum
Adair	Strang	Spavinaw

ADJOINING 7.5' QUADRANGLES



BIG CABIN, OK
2012