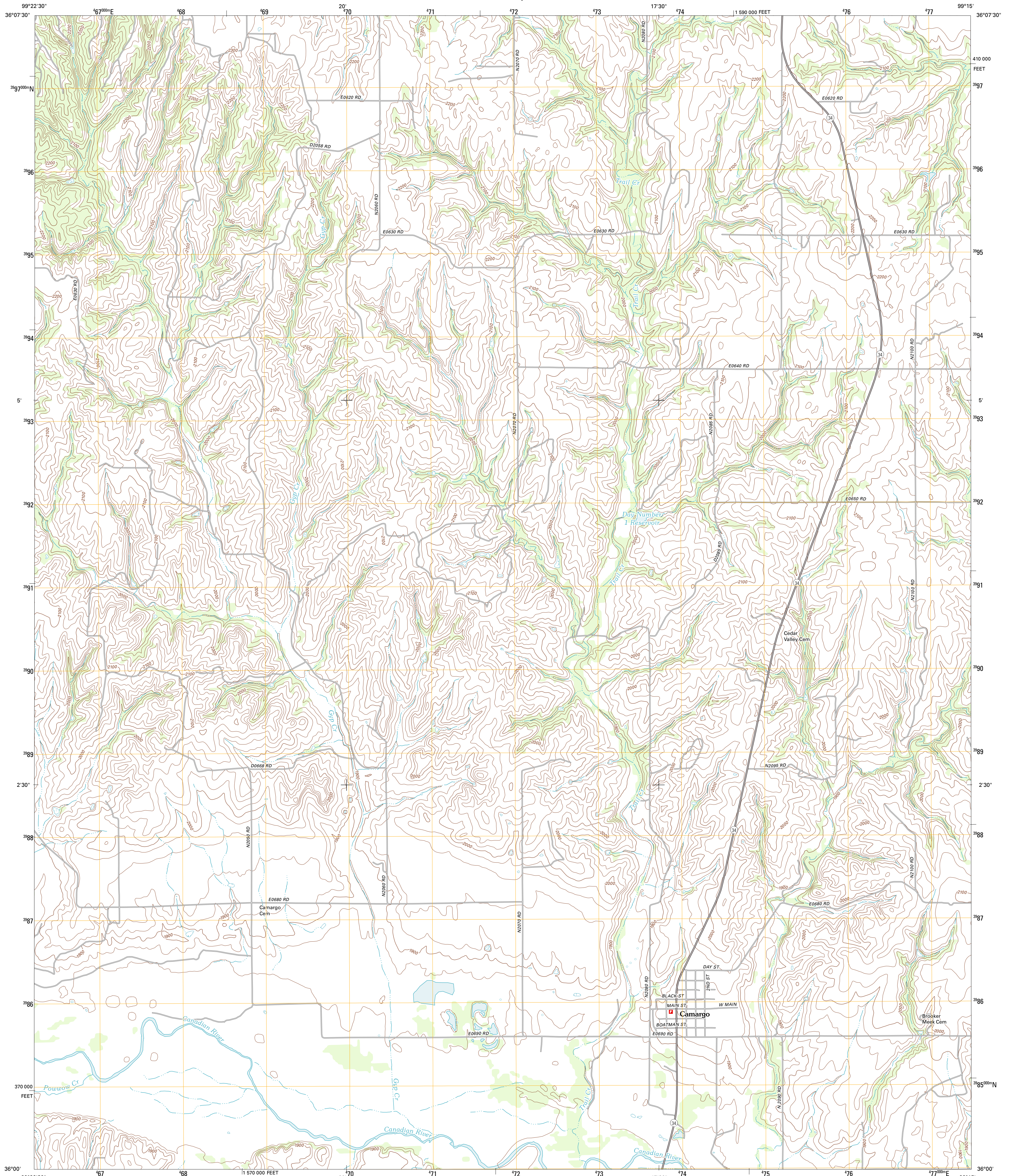




U.S. DEPARTMENT OF THE INTERIOR
U. S. GEOLOGICAL SURVEY

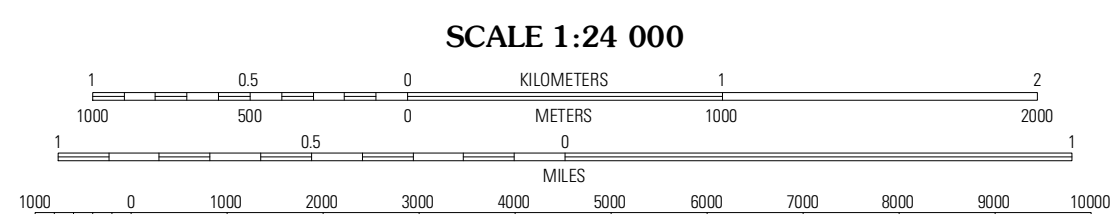
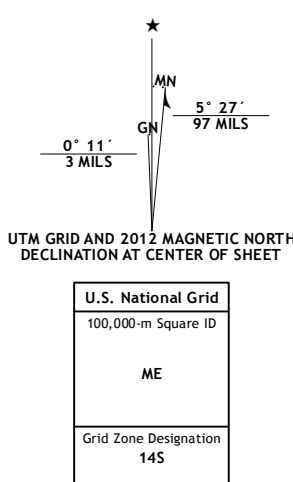


CAMARGO QUADRANGLE
OKLAHOMA-DEWEY CO.
7.5-MINUTE SERIES



Produced by the United States Geological Survey
North American Datum of 1983 (NAD83)
World Geodetic System of 1984 (WGS84). Projection and
1 000-meter grid: Universal Transverse Mercator, Zone 14S
10 000-foot ticks: Oklahoma Coordinate System of 1983
(north zone)

Imagery:.....NAIP, April 2010 - May 2010
Roads:.....©2006-2011 TomTom
Names:.....GNIS, 2012
Hydrography:.....National Hydrography Dataset, 2010
Contours:.....National Elevation Dataset, 2000
Boundaries:.....Census, IBWC, IBC, USGS, 1972 - 2012

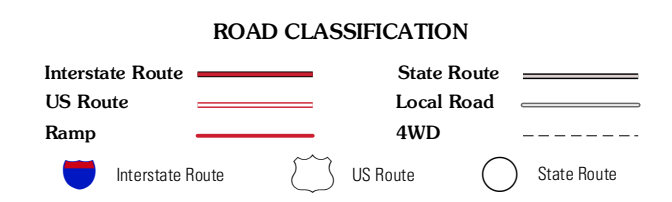


CONTOUR INTERVAL 20 FEET
NORTH AMERICAN VERTICAL DATUM OF 1988
This map was produced to conform with the
National Geospatial Program US Topo Product Standard, 2011.
A metadata file associated with this product is draft version 0.6.6



QUADRANGLE LOCATION

Vic NW	Vic	Mutual
Vic SW	Camargo	Mutual SW
Flying Creek	Trail	Webb



CAMARGO, OK
2012

ADJOINING 7.5' QUADRANGLES