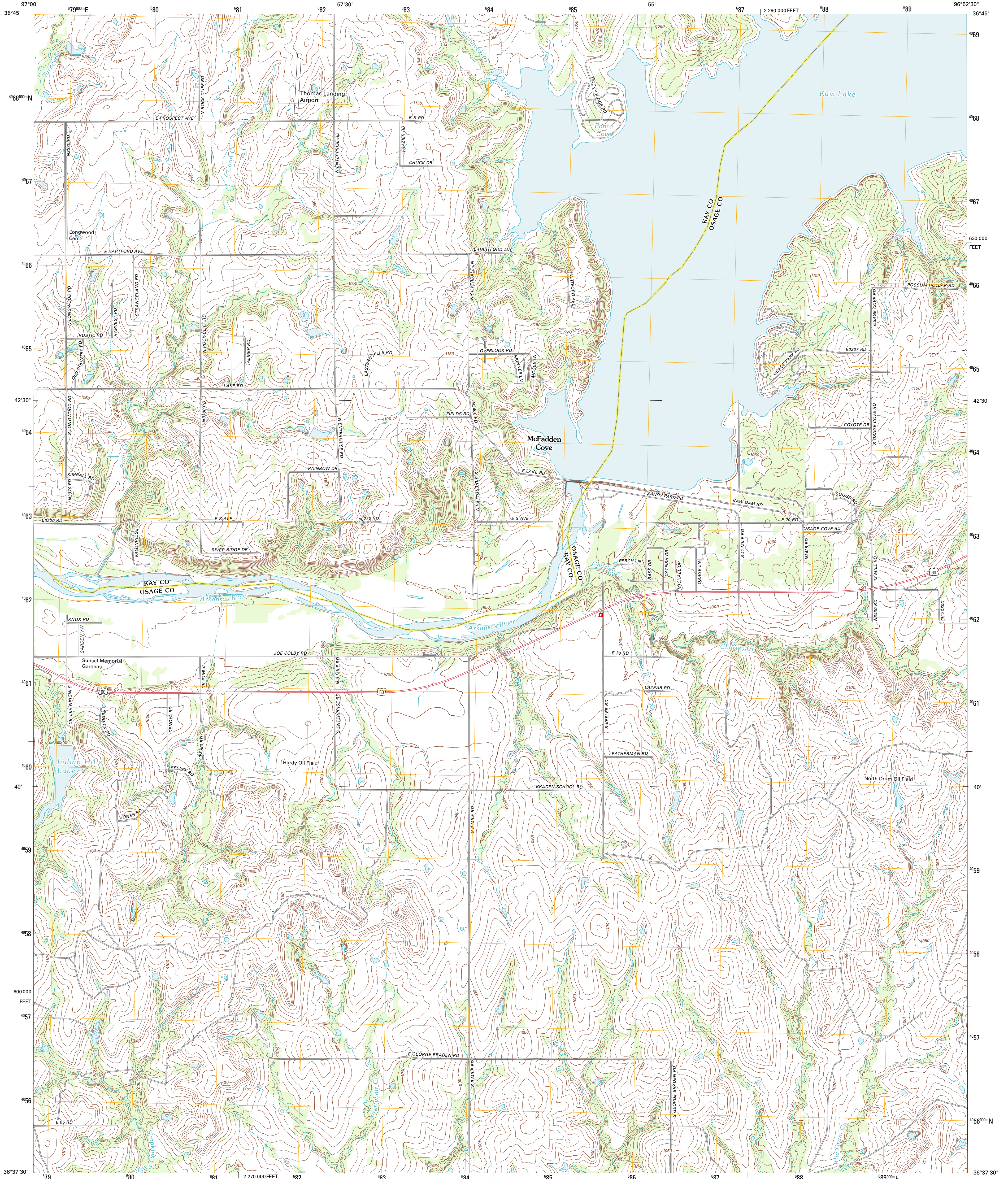




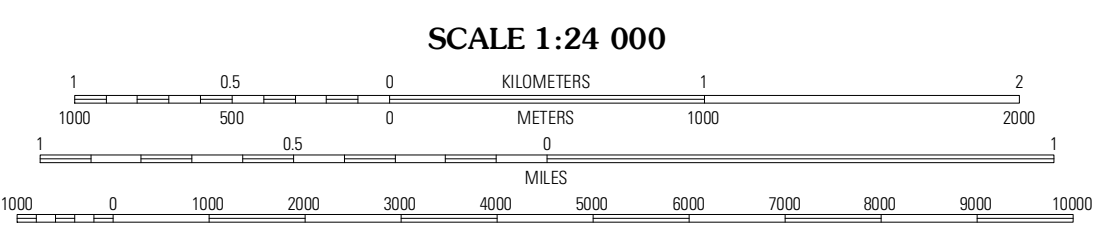
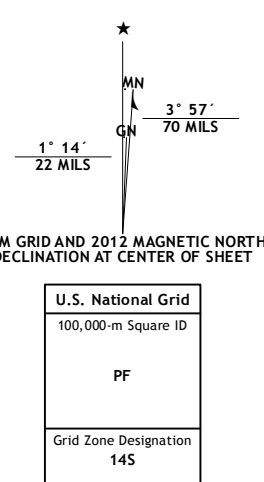
U.S. DEPARTMENT OF THE INTERIOR  
U. S. GEOLOGICAL SURVEY



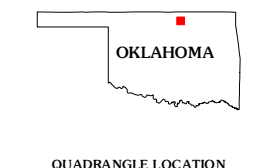
CHARLEY CREEK WEST QUADRANGLE  
OKLAHOMA  
7.5-MINUTE SERIES



Produced by the United States Geological Survey  
North American Datum of 1983 (NAD83)  
World Geodetic System of 1984 (WGS84) Projection and  
1 000 meter grid; Universal Transverse Mercator, Zone 14S  
10 000-foot ticks; Oklahoma Coordinate System of 1983  
(north zone)

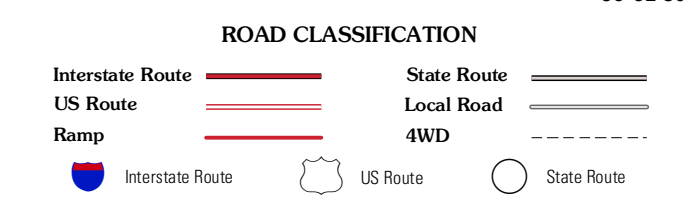


CONTOUR INTERVAL 10 FEET  
NORTH AMERICAN VERTICAL DATUM OF 1988  
This map was produced to conform with the  
National Geospatial Program US Topo Product Standard, 2011.  
A metadata file associated with this product is draft version 0.6.6



QUADRANGLE LOCATION

Kildare	Uncas	Kaw City
Ponca City	Charley Creek West	Charley Creek East
Ponca City SE	Prettyhair Creek	Doga Creek



CHARLEY CREEK WEST, OK  
2012

ADJOINING 7.5' QUADRANGLES