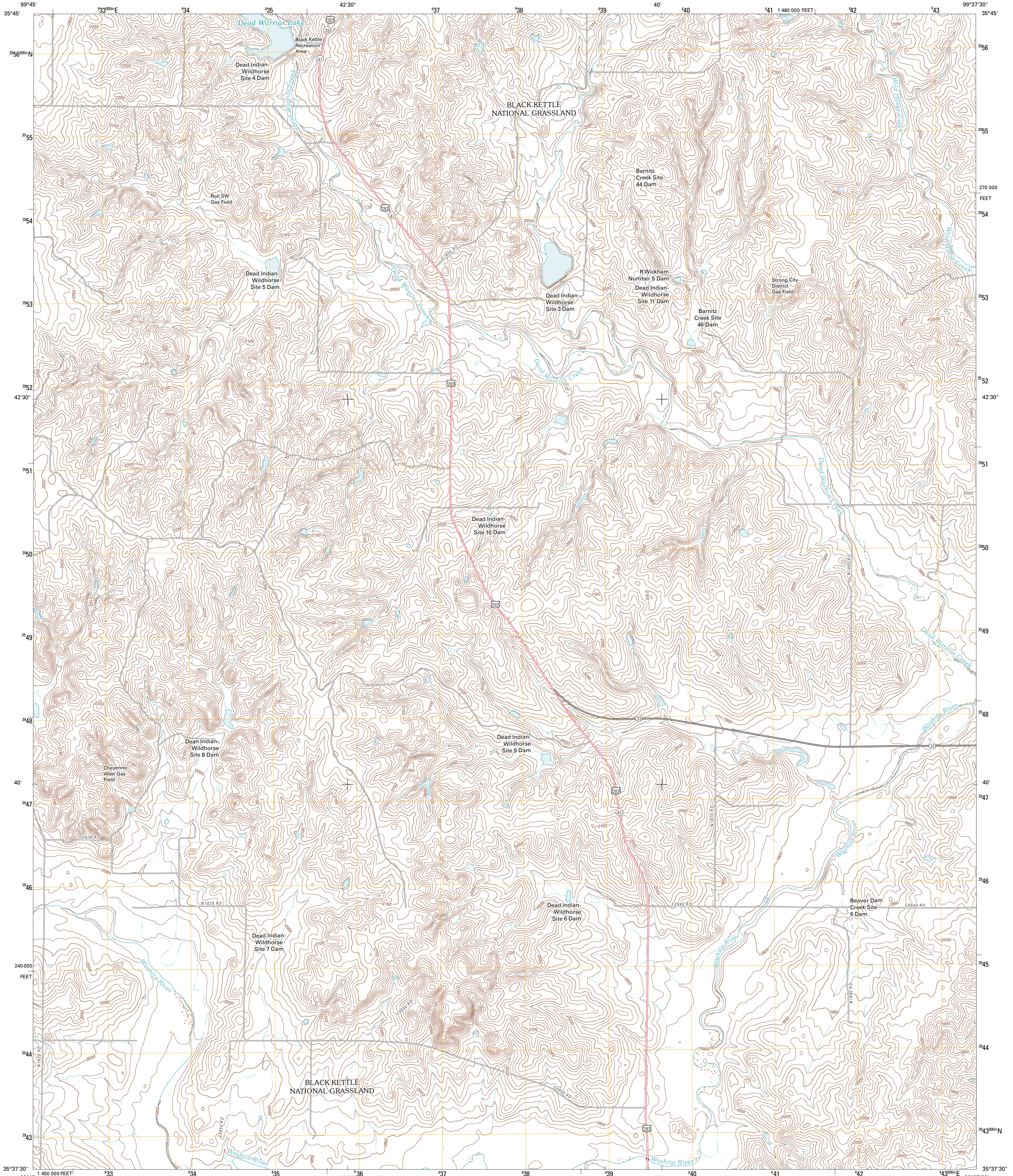




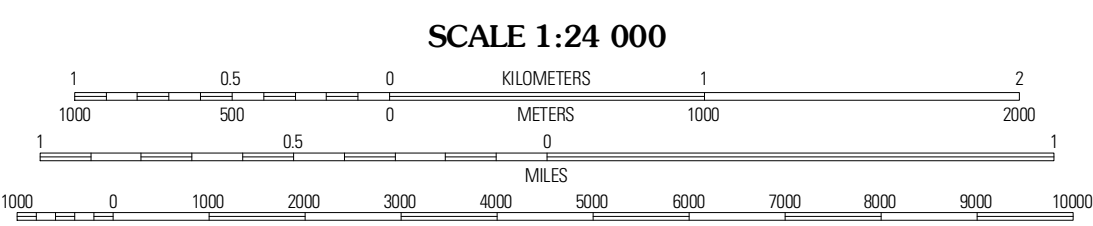
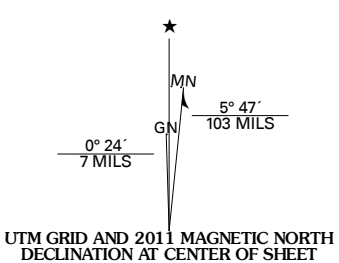
U.S. DEPARTMENT OF THE INTERIOR
U. S. GEOLOGICAL SURVEY



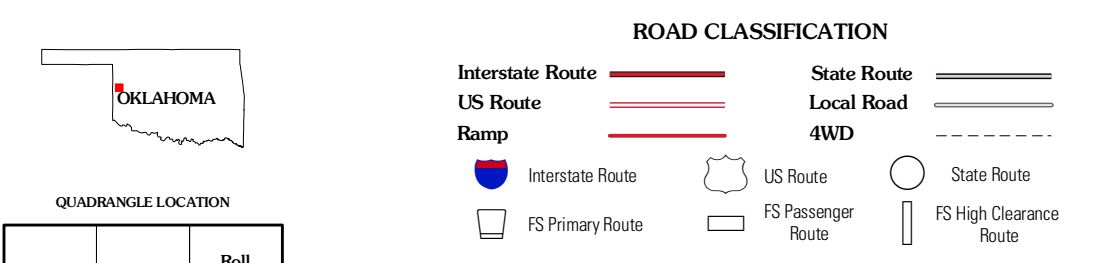
CHEYENNE NW QUADRANGLE
OKLAHOMA
7.5-MINUTE SERIES



Produced by the United States Geological Survey
North American Datum of 1983 (NAD83)
World Geodetic System of 1984 (WGS84). Projection and
1 000-meter grid: Universal Transverse Mercator, Zone 14S
10 000-foot ticks: Oklahoma Coordinate System of 1983
(north zone)



CONTOUR INTERVAL 10 FEET
NORTH AMERICAN VERTICAL DATUM OF 1988
This map was produced to conform with version 0.5.10 of the
draft USGS Standards for 7.5-Minute Quadrangle Maps.
A metadata file associated with this product is draft version 0.5.12



QUADRANGLE LOCATION

Crawford	Roll	Roll SE
Mackie	Cheyenne NW	Strong City
Dempsey	Cheyenne	Herting

Check with local Forest Service unit
for current travel conditions and restrictions.

CHEYENNE NW, OK
2011

ADJOINING 7.5 QUADRANGLES

Imagery: NAIIP, April 2008
Roads: ©2006-2010 Tele Atlas
Roads within US Forest Service Lands: FSTopo Data
with limited Forest Service updates, 2009
Names: GNIS, 2010
Hydrography: National Hydrography Dataset, 2008
Contours: National Elevation Dataset, 2000

U.S. National Grid
100,000-m Square ID
ME
Grid Zone Designation
14S