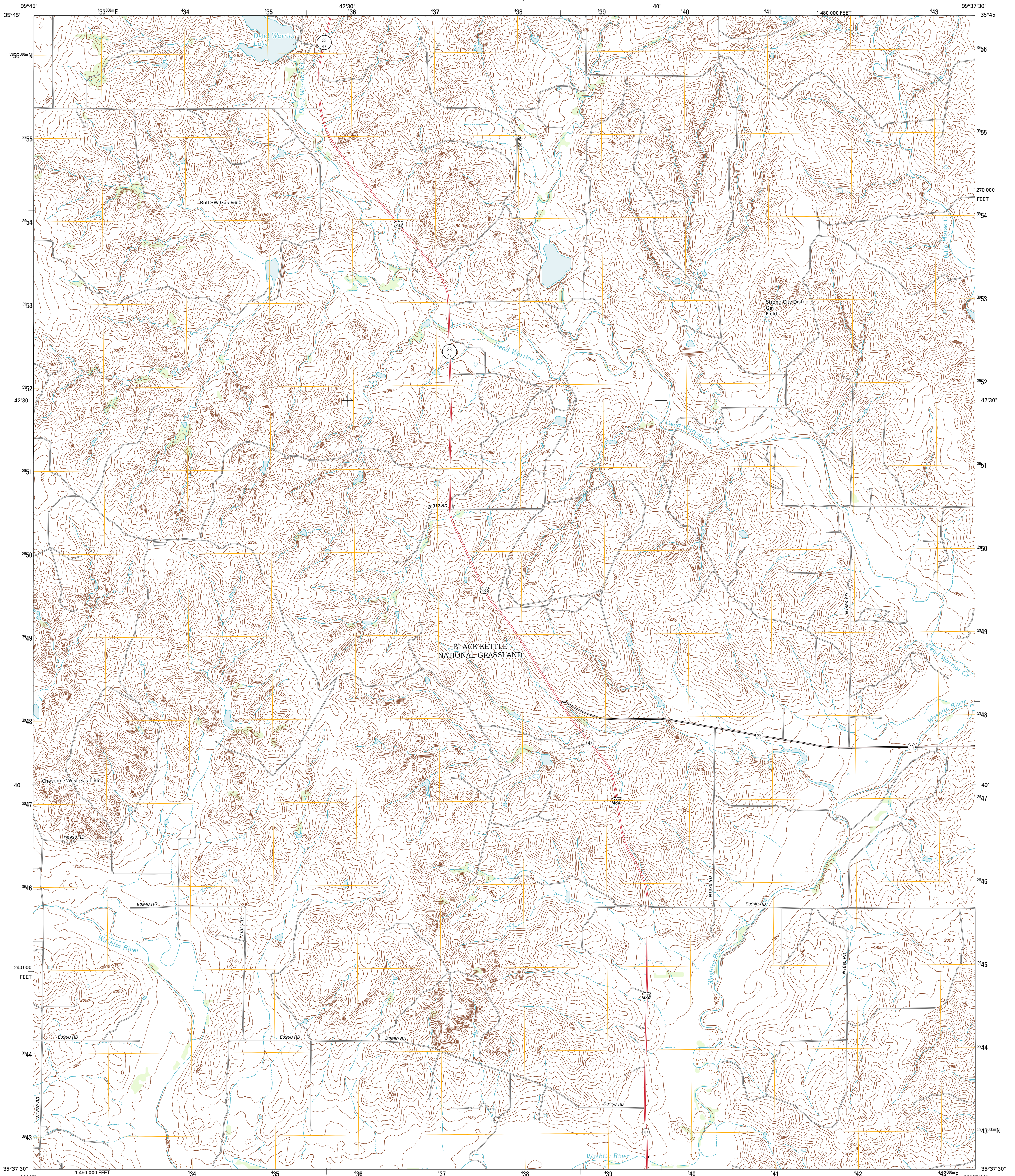




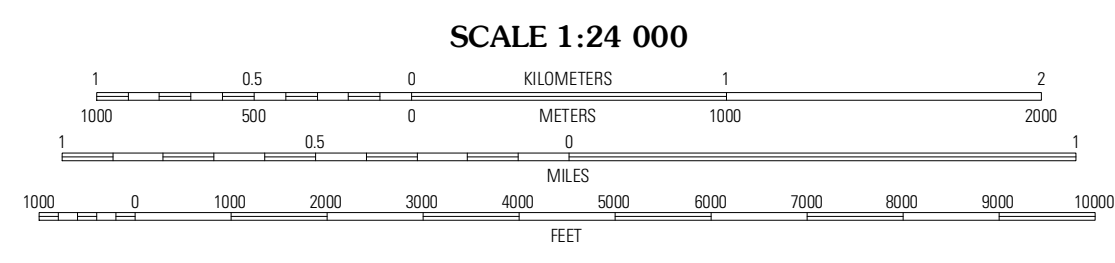
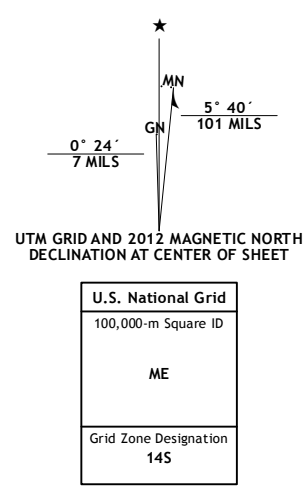
U.S. DEPARTMENT OF THE INTERIOR
U. S. GEOLOGICAL SURVEY



CHEYENNE NW QUADRANGLE
OKLAHOMA-ROGER MILLS CO.
7.5-MINUTE SERIES



Produced by the United States Geological Survey
North American Datum of 1983 (NAD83)
World Geodetic System of 1984 (WGS84). Projection and
1 000-meter grid: Universal Transverse Mercator, Zone 14S
10 000-foot ticks: Oklahoma Coordinate System of 1983
(north zone)

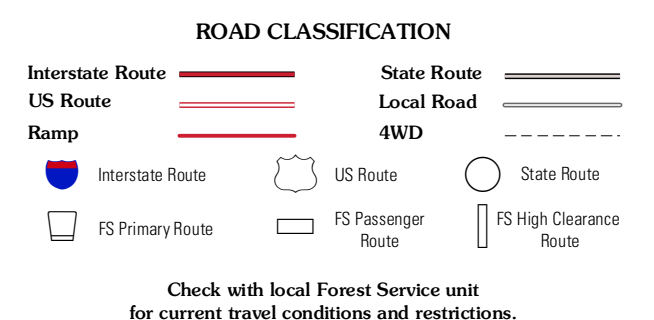


CONTOUR INTERVAL 10 FEET
NORTH AMERICAN VERTICAL DATUM OF 1988
This map was produced to conform with the
National Geospatial Program US Topo Product Standard, 2011.
A metadata file associated with this product is draft version 0.6.6



QUADRANGLE LOCATION

Crawford	Roll	Roll SE
Mackie	Cheyenne NW	Strong City
Dampney	Cheyenne	Herring



CHEYENNE NW, OK
2012

Imagery: NAIP, April 2010
Roads: ©2006-2011 TomTom
Roads within US Forest Service Lands: FSTopo Data with limited Forest Service updates, 2012
Names: GNIS, 2012
Hydrography: National Hydrography Dataset, 2010
Contours: National Elevation Dataset, 2000
Boundaries: Census, IBWC, IBC, USGS, 1972 - 2012

U.S. National Grid

100,000-m Square ID
ME
Grid Zone Designation
14S