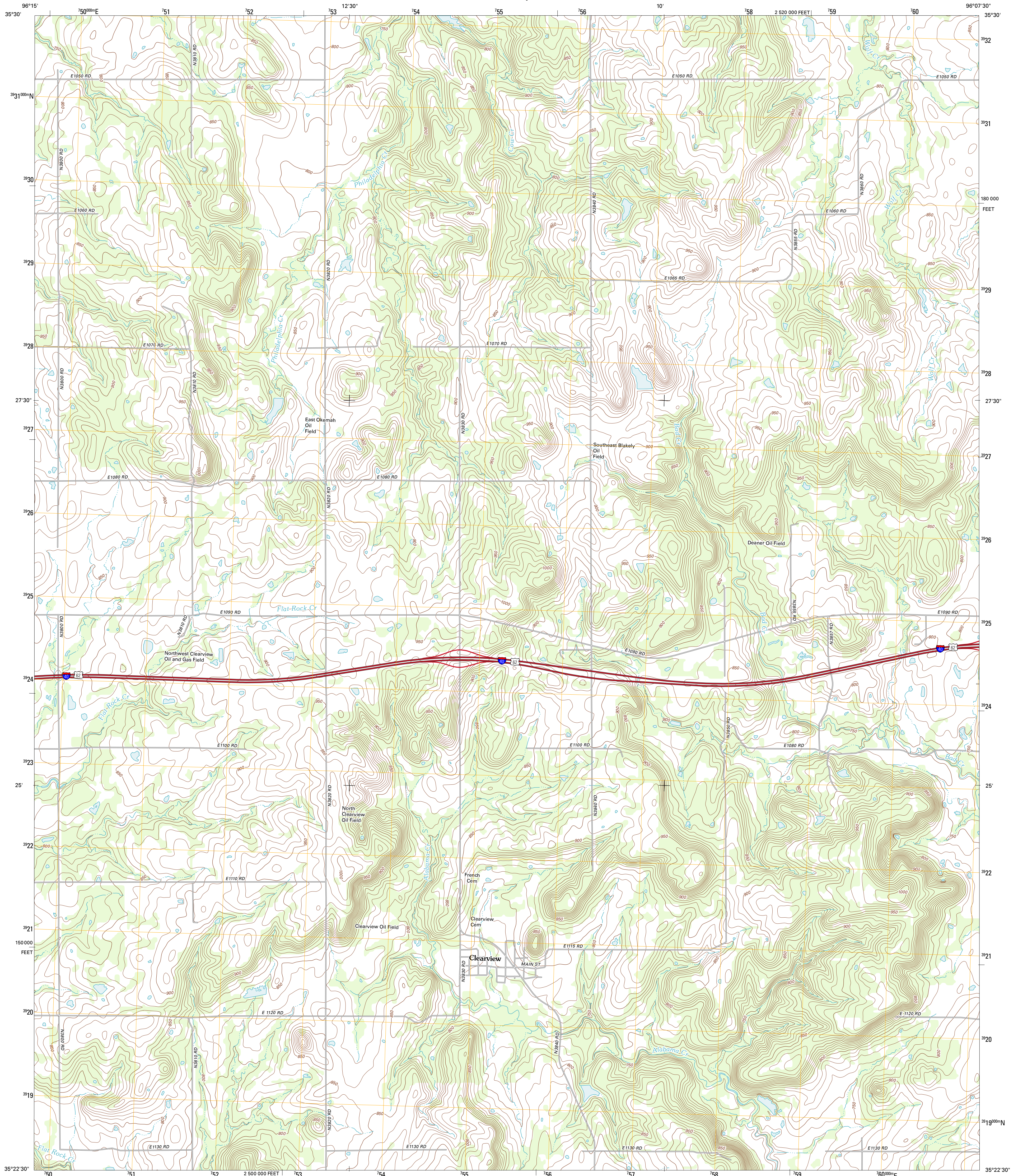




U.S. DEPARTMENT OF THE INTERIOR  
U. S. GEOLOGICAL SURVEY

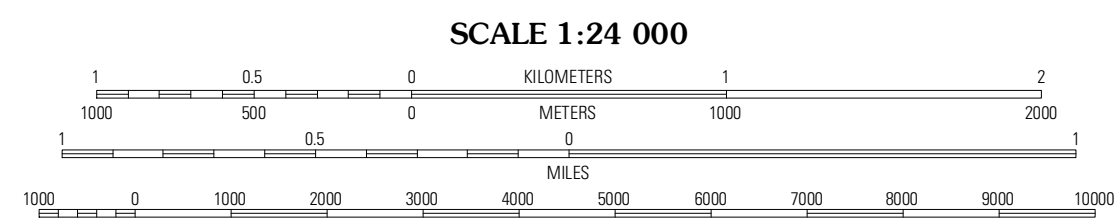
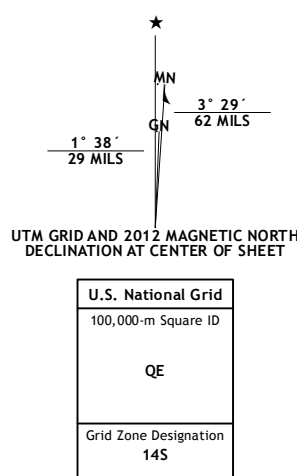


CLEARVIEW QUADRANGLE  
OKLAHOMA-OKFUSKEE CO.  
7.5-MINUTE SERIES

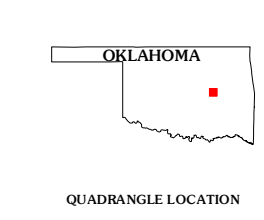


Produced by the United States Geological Survey  
North American Datum of 1983 (NAD83)  
World Geodetic System of 1984 (WGS84), Projection and  
1 000-meter grid; Universal Transverse Mercator, Zone 14S  
10 000-foot ticks; Oklahoma Coordinate System of 1983  
(north zone)

Imagery.....NAIP, August 2010  
Roads.....©2006-2011 TomTom  
Names.....GNIS, 2012  
Hydrography.....National Hydrography Dataset, 2010  
Contours.....National Elevation Dataset, 2007  
Boundaries.....Census, IBWC, IBC, USGS, 1972 - 2012



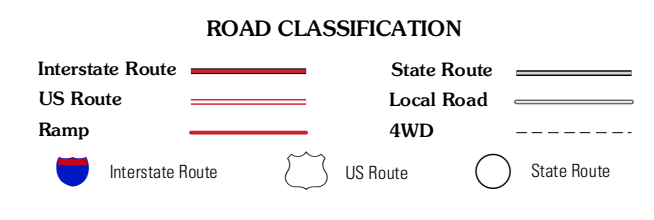
CONTOUR INTERVAL 10 FEET  
NORTH AMERICAN VERTICAL DATUM OF 1988  
This map was produced to conform with the  
National Geospatial Program US Topo Product Standard, 2011.  
A metadata file associated with this product is draft version 0.6.6



QUADRANGLE LOCATION

Mason	Okfuskee	Okmulgee Lake
Okemah	Clearview	Pharoah
Okemah SE	Wahpetka	Dustin

ADJOINING 7.5' QUADRANGLES



CLEARVIEW, OK  
2012