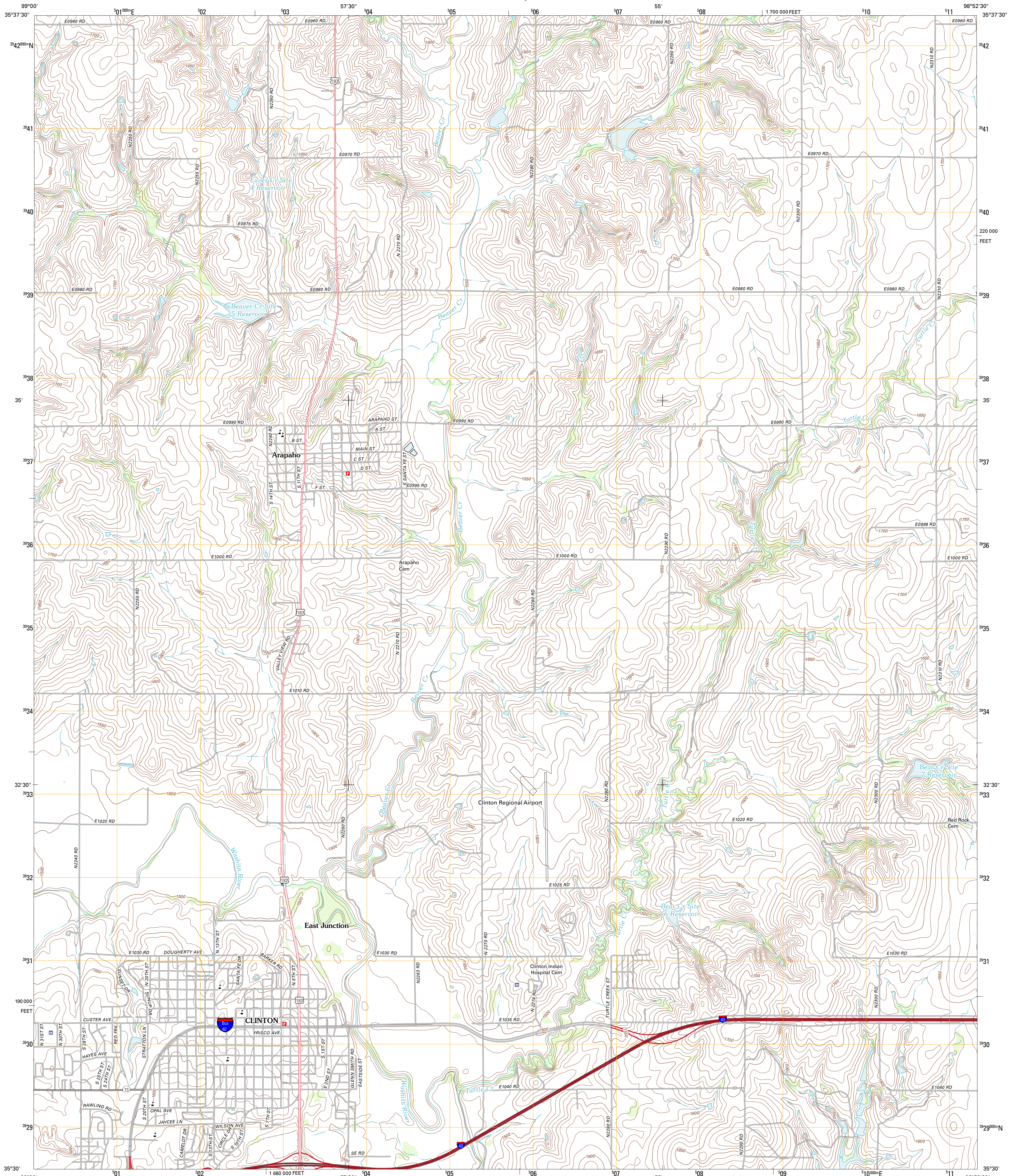




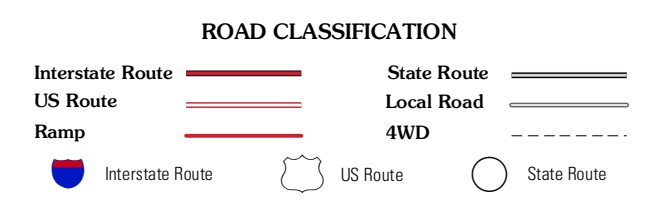
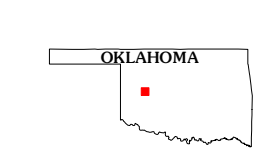
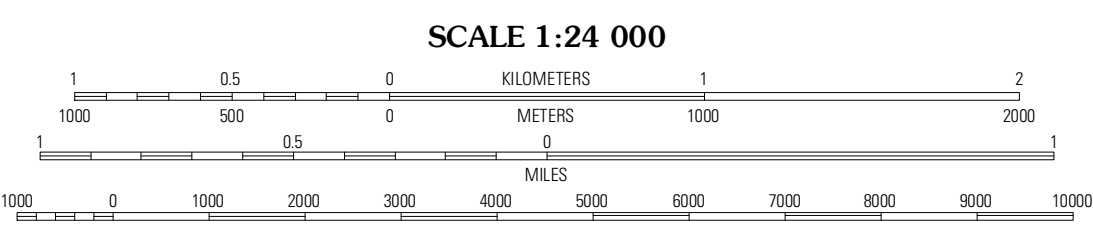
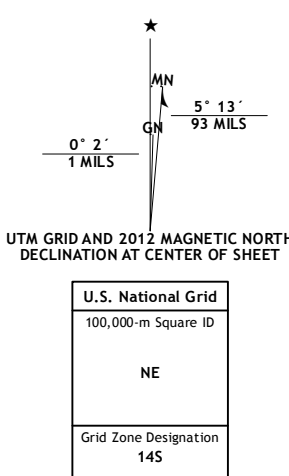
U.S. DEPARTMENT OF THE INTERIOR
U. S. GEOLOGICAL SURVEY



CLINTON QUADRANGLE
OKLAHOMA-CUSTER CO.
7.5-MINUTE SERIES



Produced by the United States Geological Survey
North American Datum of 1983 (NAD83)
World Geodetic System of 1984 (WGS84)
Projection and 1 000-meter grid: Universal Transverse Mercator, Zone 14S
10 000-foot ticks: Oklahoma Coordinate System of 1983 (north zone)



QUADRANGLE LOCATION

Arthon	Custer City	Clinton NE
Stafford	Clinton	Indianapolis
Dill City NE	Bessemer	Com

CONTOUR INTERVAL 10 FEET
NORTH AMERICAN VERTICAL DATUM OF 1988

This map was produced to conform with the National Geospatial Program US Topo Product Standard, 2011. A metadata file associated with this product is draft version 0.6.6

CLINTON, OK
2012

ADJOINING 7.5' QUADRANGLES