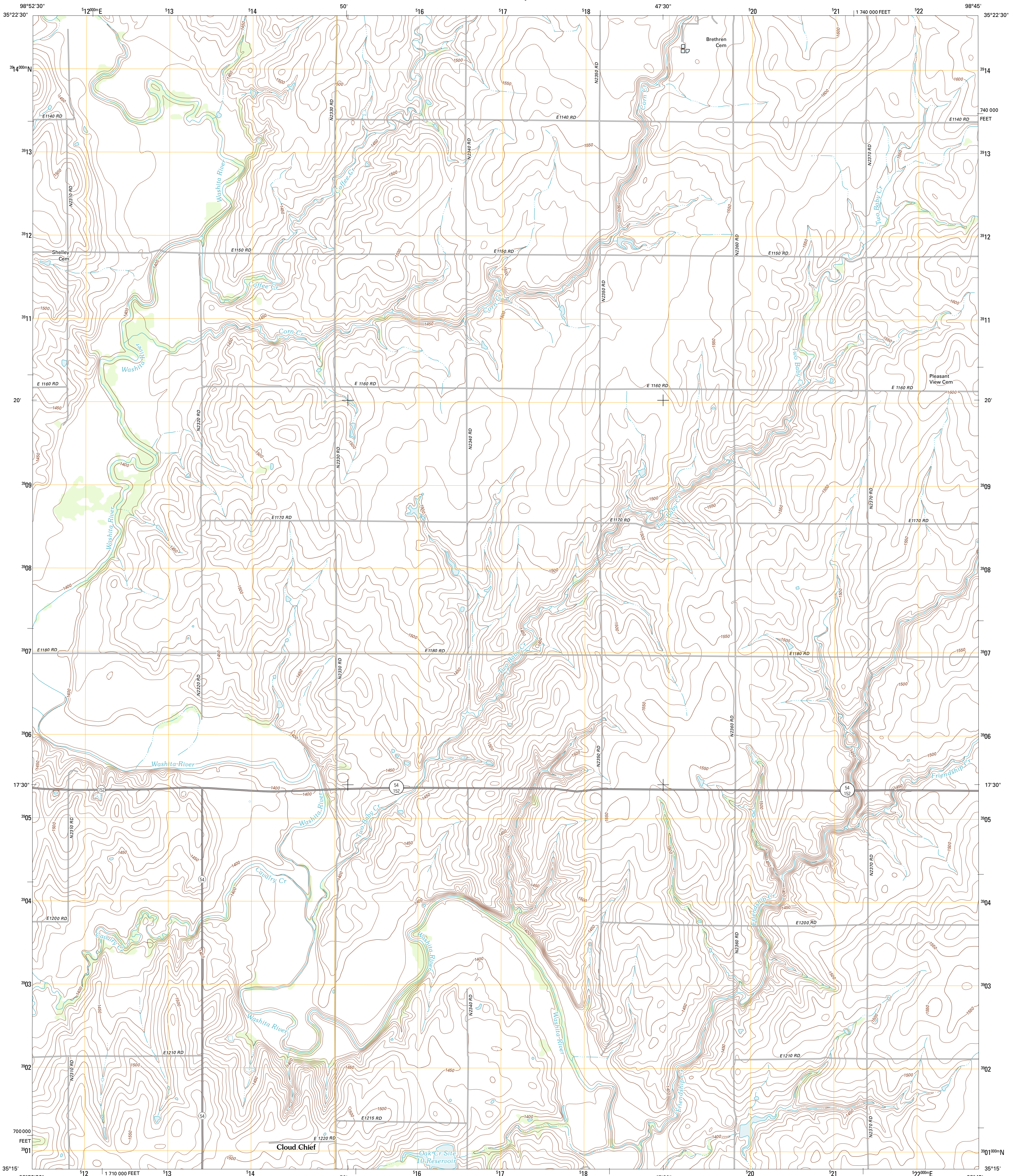




U.S. DEPARTMENT OF THE INTERIOR  
U. S. GEOLOGICAL SURVEY

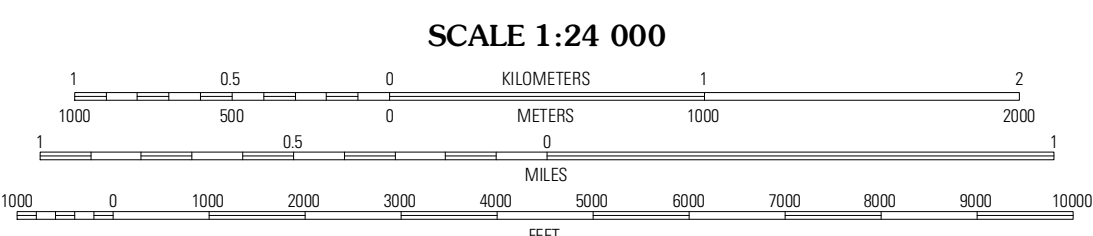
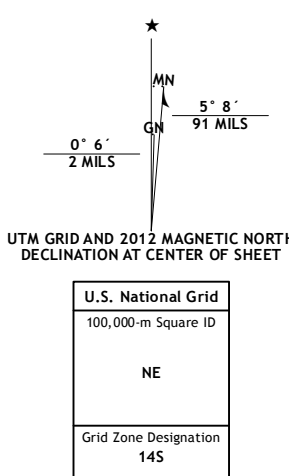


CLOUD CHIEF QUADRANGLE  
OKLAHOMA-WASHITA CO.  
7.5-MINUTE SERIES



Produced by the United States Geological Survey  
North American Datum of 1983 (NAD83)  
World Geodetic System of 1984 (WGS84), Projection and  
1 000-meter grid: Universal Transverse Mercator, Zone 14S  
10 000-foot ticks: Oklahoma Coordinate System of 1983  
(south zone)

Imagery: NADP, May 2010  
Roads: ©2006-2011 TomTom  
Names: GNS, 2012  
Hydrography: National Hydrography Dataset, 2010  
Contours: National Elevation Dataset, 2000  
Boundaries: Census, IBWC, IBC, USGS, 1972-2012



SCALE 1:24 000  
CONTOUR INTERVAL 10 FEET  
NORTH AMERICAN VERTICAL DATUM OF 1988  
This map was produced to conform with the  
National Geospatial Program US Topo Product Standard, 2011.  
A metadata file associated with this product is draft version 0.6.6



QUADRANGLE LOCATION

Bessie	Corn	Crowder Lake
Cordell	Cloud Chief	Colony
Golebo NW	Lake Valley	Cowden

ADJOINING 7.5' QUADRANGLES

**ROAD CLASSIFICATION**  
 Interstate Route (thick red line)  
 US Route (red line)  
 Ramp (red line with blue triangle)  
 State Route (thin red line)  
 Local Road (black line)  
 4WD (dashed black line)  
 (Other symbols for road types)

CLOUD CHIEF, OK  
2012