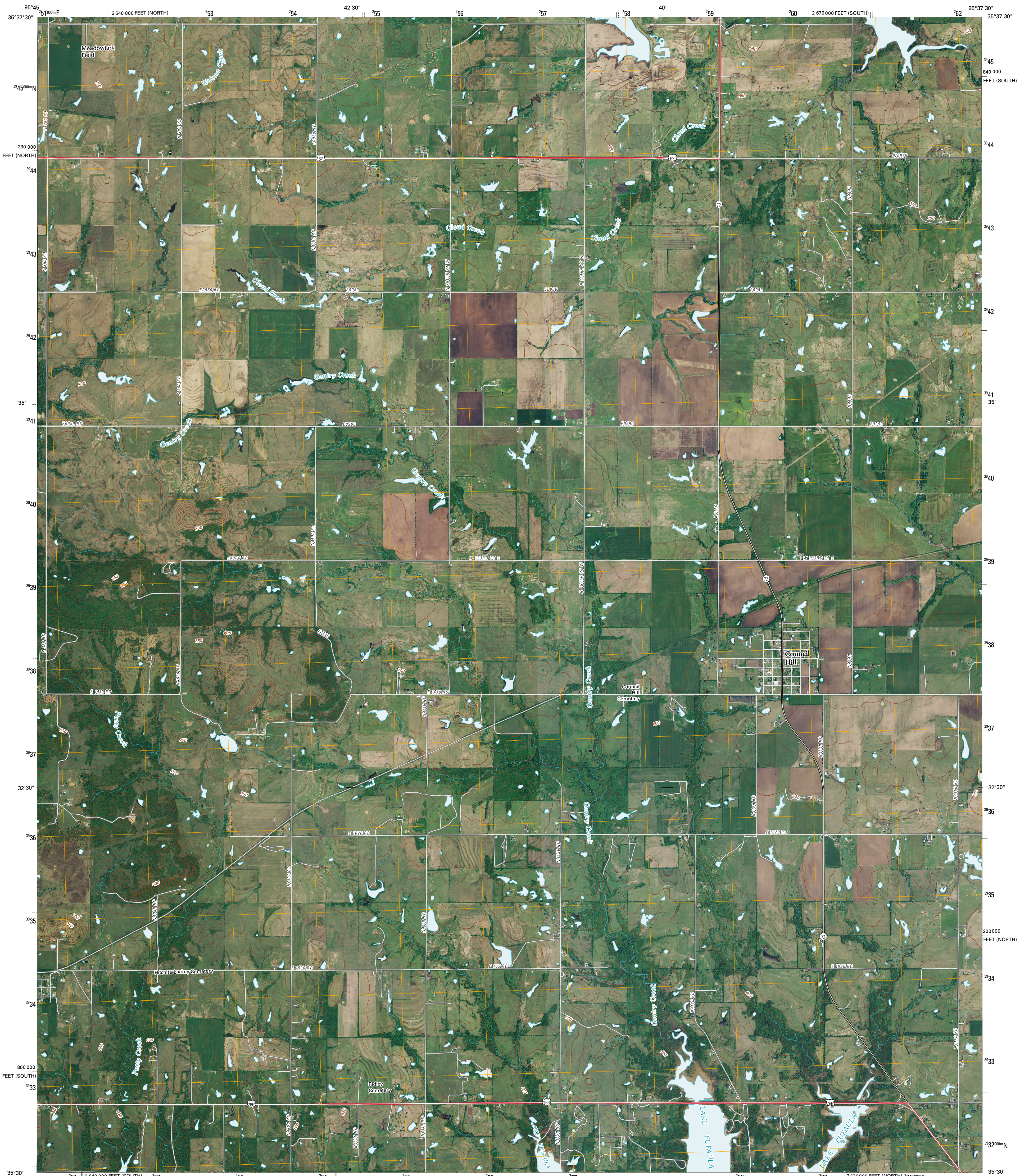




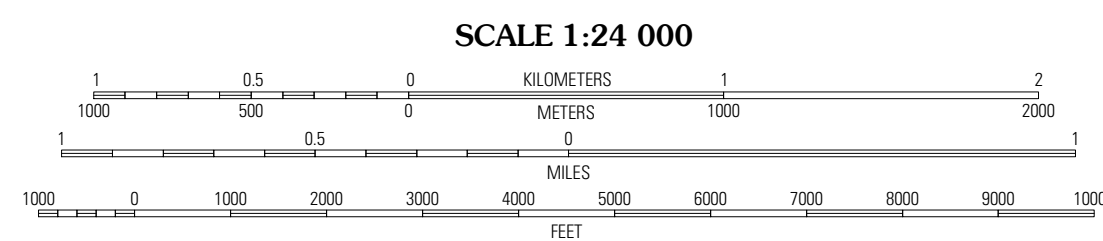
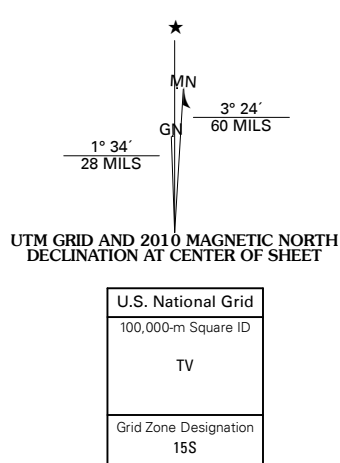
U.S. DEPARTMENT OF THE INTERIOR  
U. S. GEOLOGICAL SURVEY



COUNCIL HILL QUADRANGLE  
OKLAHOMA  
7.5-MINUTE SERIES



Produced by the United States Geological Survey  
North American Datum of 1983 (NAD83)  
World Geodetic System of 1984 (WGS84). Projection and  
1 000-meter grid: Universal Transverse Mercator, Zone 15S  
10 000-foot ticks: Oklahoma Coordinate System of 1983  
(south and north zones)



CONTOUR INTERVAL 10 FEET

This map was produced to conform with version 0.5.10 of the  
draft USGS Standards for 7.5-Minute Quadrangle Maps.  
A metadata file associated with this product is also draft version 0.5.10

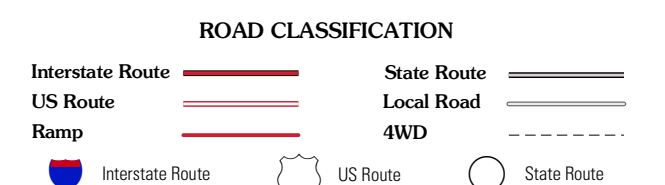
Imagery.....NIP, May 2008  
Roads.....National Transportation Dataset, 2006 - 2008  
Names.....GNIS, 2008  
Hydrography.....National Hydrography Dataset, 2008  
Contours.....National Elevation Dataset, 2007



QUADRANGLE LOCATION

Okmulgee	Boynton	Beland
Morris	<b>Council Hill</b>	Wainwright
Hoffman	Pierce	Checotah

ADJOINING 7.5' QUADRANGLES



COUNCIL HILL, OK  
2010