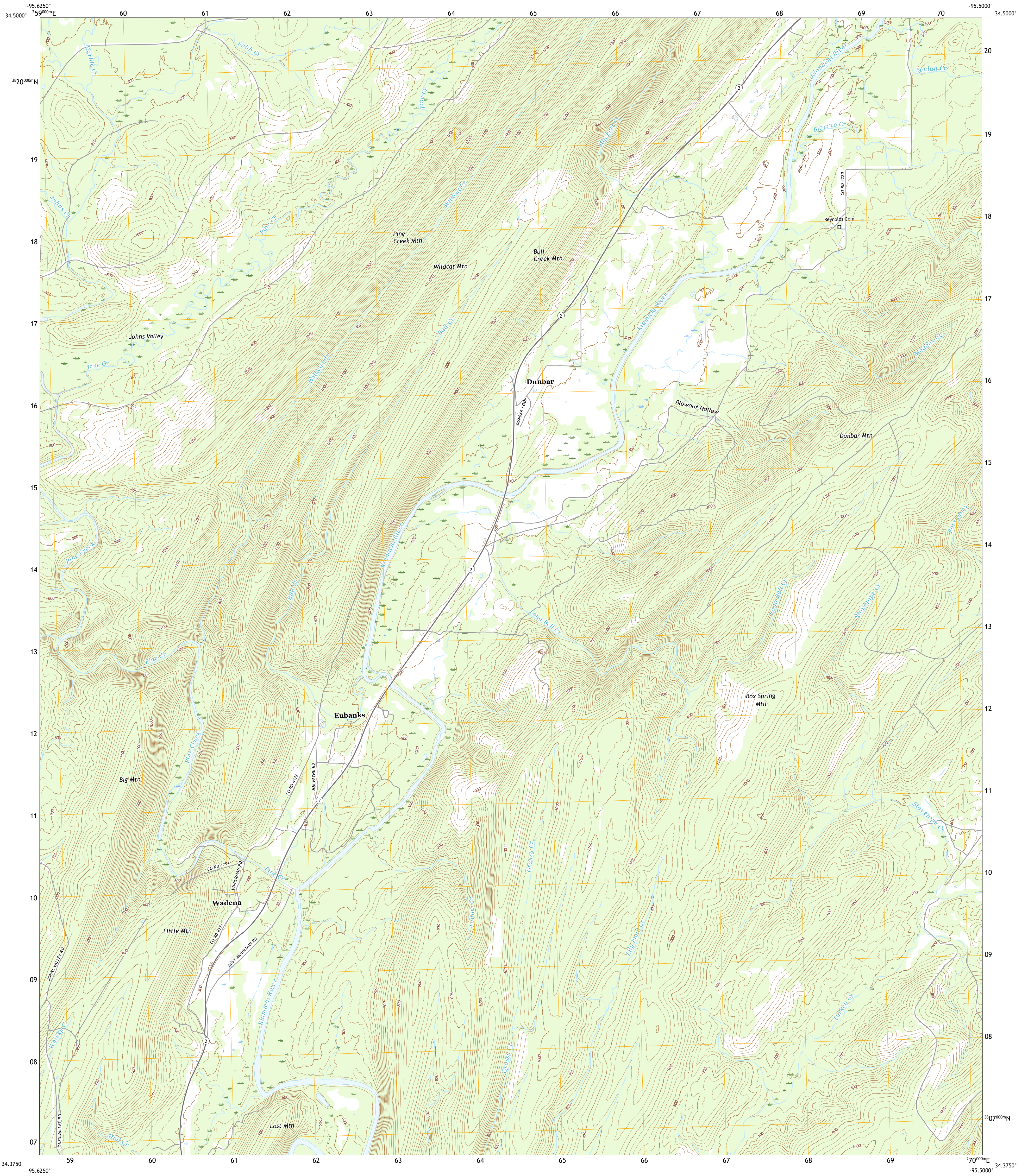




U.S. DEPARTMENT OF THE INTERIOR
U.S. GEOLOGICAL SURVEY



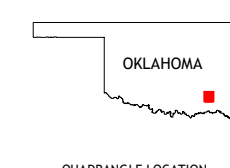
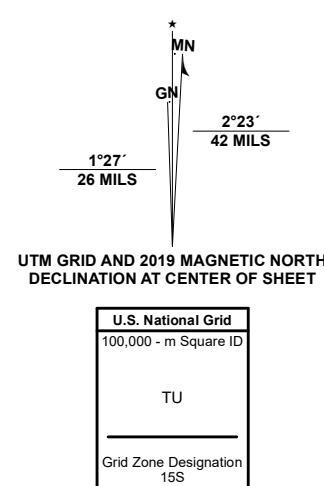
DUNBAR QUADRANGLE
OKLAHOMA - PUSHMATAHA COUNTY
7.5-MINUTE SERIES



Produced by the United States Geological Survey

North American Datum of 1983 (NAD83)
World Geodetic System of 1984 (WGS84), Projection and
1 000-meter grid/Universal Transverse Mercator, Zone 15S
This map is not a legal document. Boundaries may be
generalized for this map scale. Private lands within government
reservations may not be shown. Obtain permission before
entering private lands.

Imagery.....N.A.I.P., October 2017 - November 2017
Roads.....U.S. Census Bureau, 2015 - 2018
Names.....GNIS, 1979 - 2015
Hydrography.....National Hydrography Dataset, 2002 - 2018
Contours.....National Elevation Dataset, 2018
Boundaries.....Multiple sources; see metadata file 2019 - 2021
Public Land Survey System.....BLM, 2021
Wetlands.....FWS National Wetlands Inventory 1980 - 1981



QUADRANGLE LOCATION

| | | |
|---|---|---|
| 1 | 2 | 3 |
| 4 | 5 | 6 |
| 7 | 8 | 9 |

ADJOINING QUADRANGLES

1 Daisy
2 Adel
3 Stanley
4 Jumbo
5 Snow
6 Moyers
7 Kosoma
8 Finley

ROAD CLASSIFICATION

| | | | |
|--|------------------|--|-----------------|
| | Expressway | | Local Connector |
| | Secondary Hwy | | Local Road |
| | Ramp | | 4WD |
| | Interstate Route | | US Route |
| | | | State Route |

DUNBAR, OK
2022

