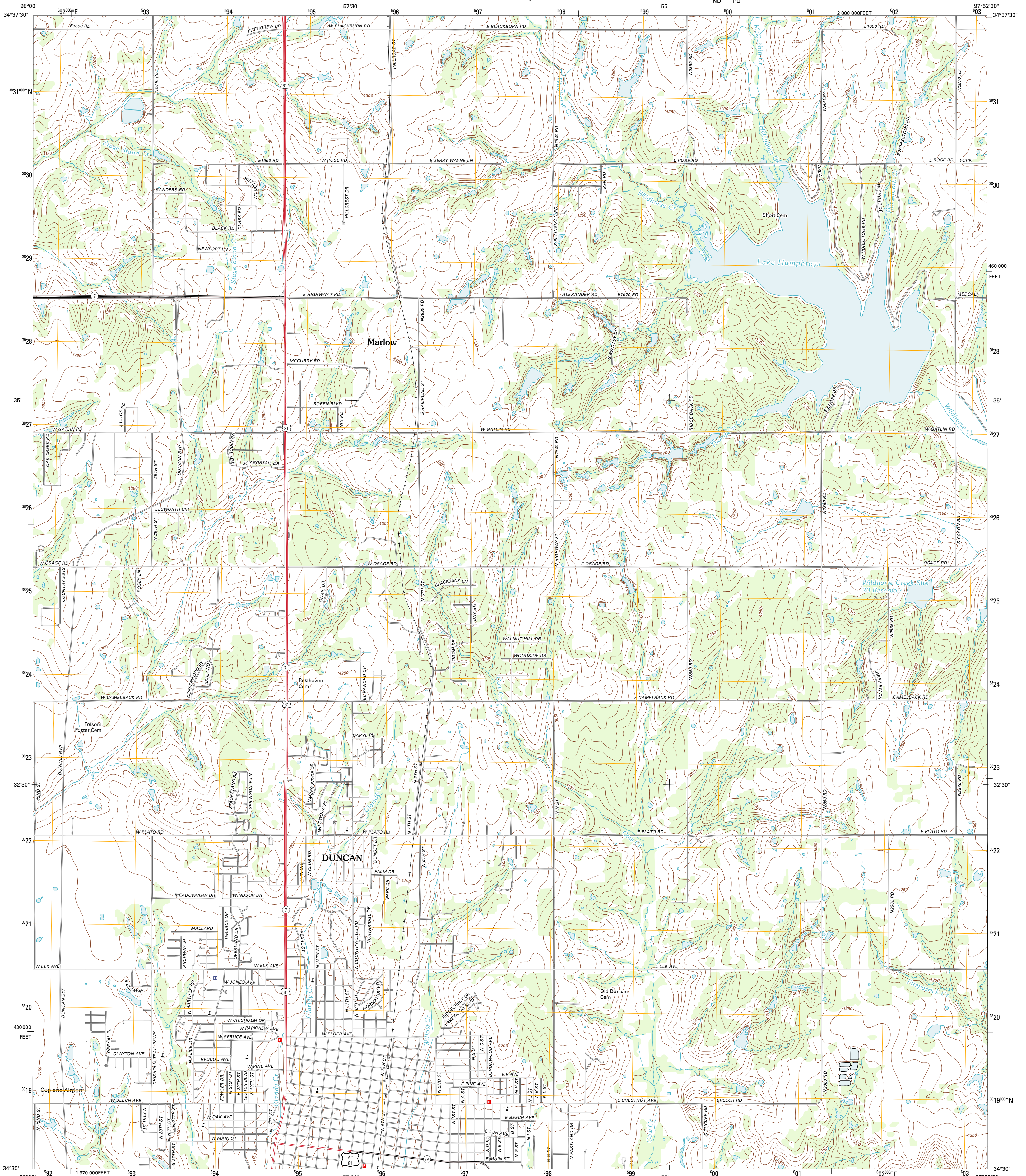




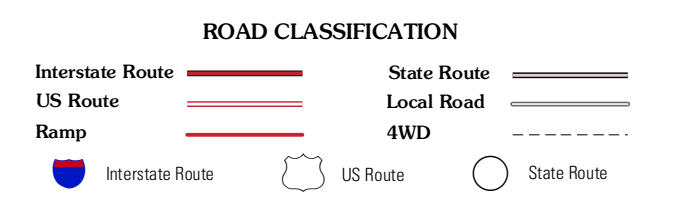
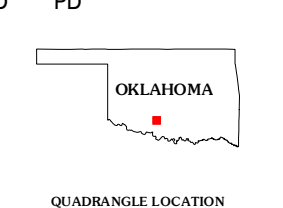
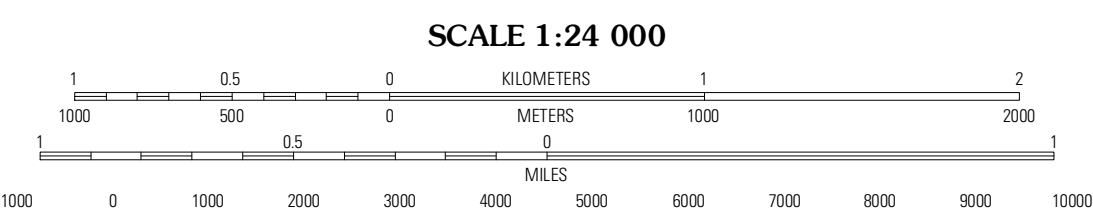
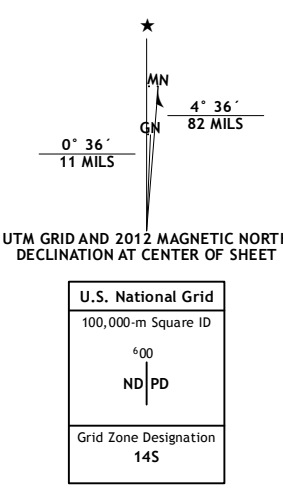
U.S. DEPARTMENT OF THE INTERIOR
U. S. GEOLOGICAL SURVEY



DUNCAN NORTH QUADRANGLE
OKLAHOMA-STEPHENS CO.
7.5-MINUTE SERIES



Produced by the United States Geological Survey
North American Datum of 1983 (NAD83)
World Geodetic System of 1984 (WGS84). Projection and
1 000-meter grid: Universal Transverse Mercator, Zone 14S
10 000-foot ticks: Oklahoma Coordinate System of 1983
(south zone)



QUADRANGLE LOCATION

Denton	Marlow	Bray
Nella	Duncan North	Hope
Empire City	Duncan South	Harrisburg

Imagery: NADIP, May 2010
Roads: ©2006-2011 T. TomTom
Names: ©GNIS, 2012
Hydrography: National Hydrography Dataset, 2010
Contours: National Elevation Dataset, 2007
Boundaries: Census, IBWC, IBC, USGS, 1972 - 2012

CONTOUR INTERVAL 10 FEET
NORTH AMERICAN VERTICAL DATUM OF 1988

This map was produced to conform with the
National Geospatial Program US Topo Product Standard, 2011.
A metadata file associated with this product is draft version 0.6.6

DUNCAN NORTH, OK
2012

ADJOINING 7.5 QUADRANGLES