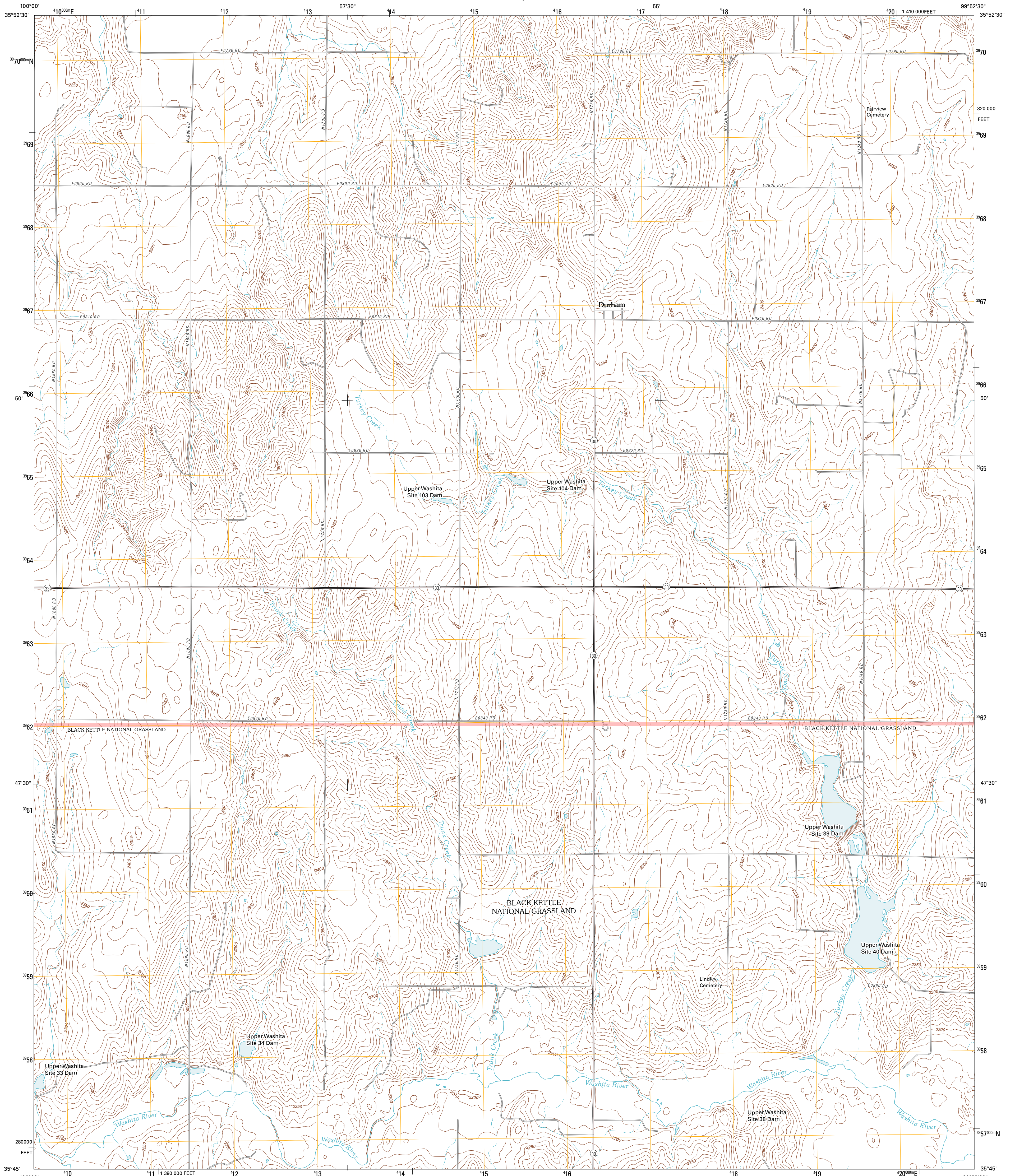




U.S. DEPARTMENT OF THE INTERIOR  
U. S. GEOLOGICAL SURVEY

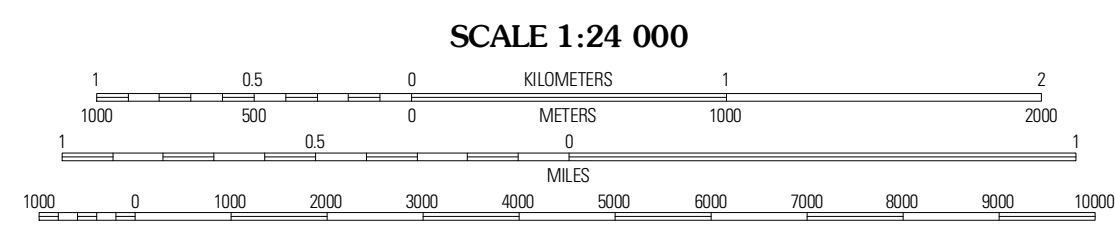
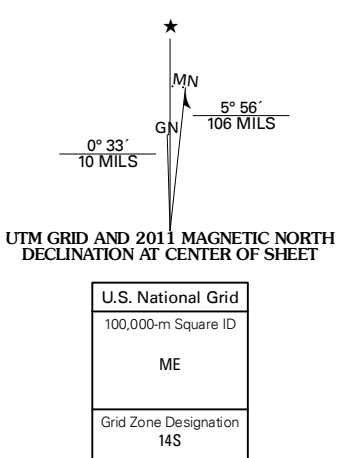


DURHAM QUADRANGLE  
OKLAHOMA  
7.5-MINUTE SERIES



Produced by the United States Geological Survey  
North American Datum of 1983 (NAD83)  
World Geodetic System of 1984 (WGS84). Projection and  
1 000-foot ticks: Oklahoma Coordinate System of 1983  
(north zone)

Imagery.....NAP, April 2008  
Roads.....©2006-2010 Tele Atlas  
Roads within US Forest Service Lands.....FS Topo Data  
with limited Forest Service updates, 2009  
Names.....GNIS, 2010  
Hydrography.....National Hydrography Dataset, 2008  
Contours.....National Elevation Dataset, 2000



CONTOUR INTERVAL 10 FEET  
NORTH AMERICAN VERTICAL DATUM OF 1988

This map was produced to conform with version 0.5.10 of the  
draft USGS Standards for 7.5-Minute Quadrangle Maps.  
A metadata file associated with this product is draft version 0.5.12



QUADRANGLE LOCATION

|                 |                |                   |
|-----------------|----------------|-------------------|
| Dreyfoos        | Antelope Hills | Antelope Hills NE |
| Gem             | Durham         | Crawford          |
| Hackberry Creek | Reyden         | Mackie            |

ROAD CLASSIFICATION

|                  |                         |
|------------------|-------------------------|
| Interstate Route | State Route             |
| US Route         | Local Road              |
| Ramp             | 4WD                     |
| FS Primary Route | US Route                |
|                  | FS Passenger Route      |
|                  | FS High Clearance Route |

Check with local Forest Service unit  
for current travel conditions and restrictions.

DURHAM, OK  
2011

ADJOINING 7.5 QUADRANGLES