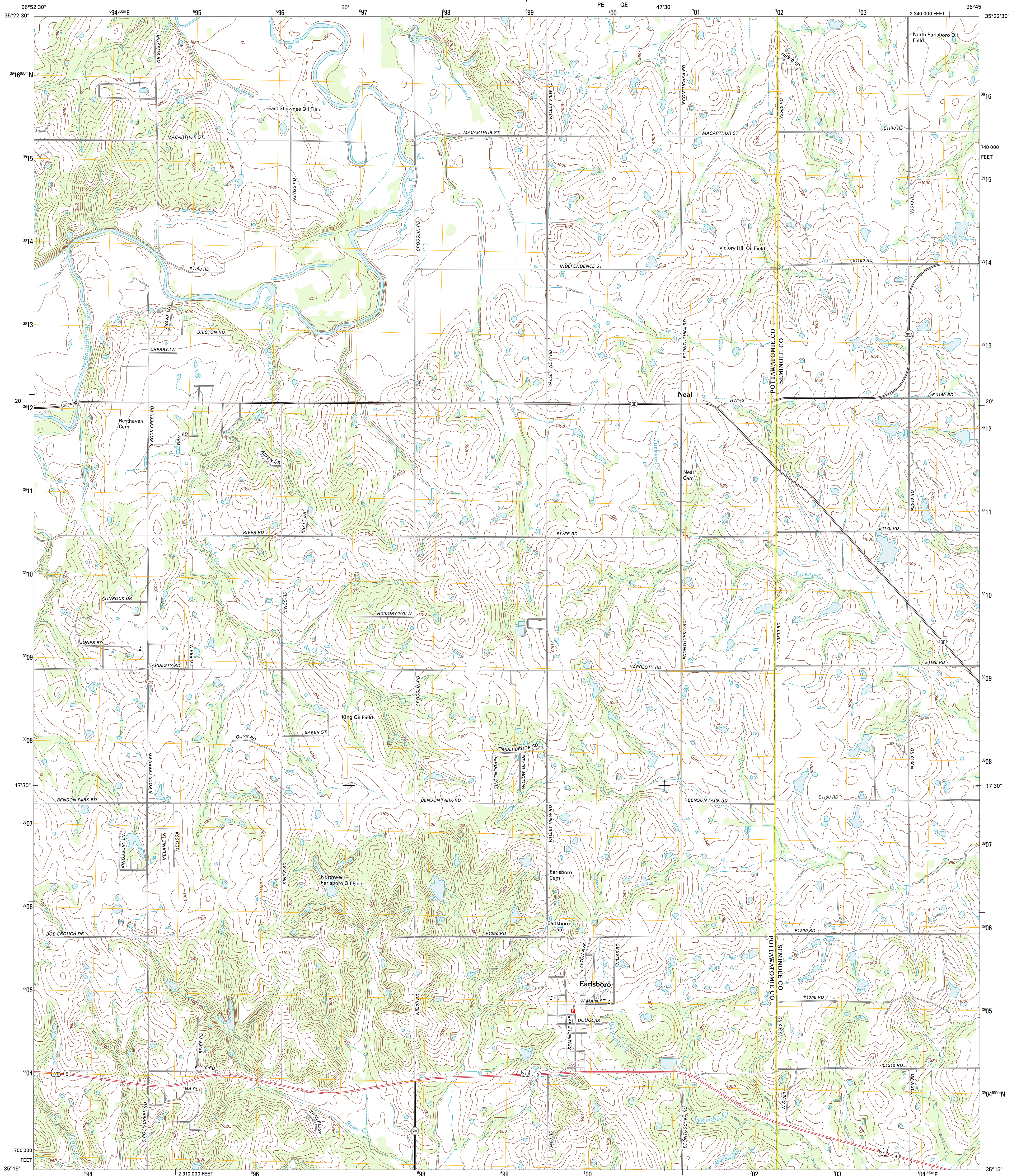




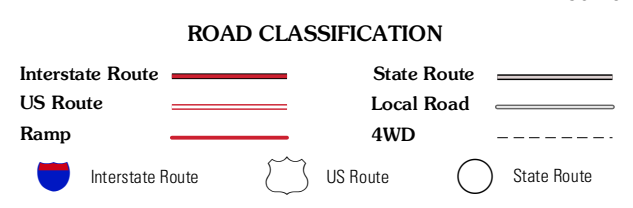
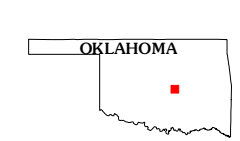
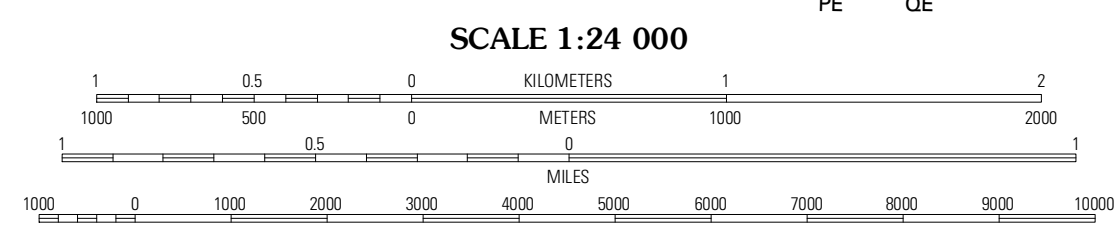
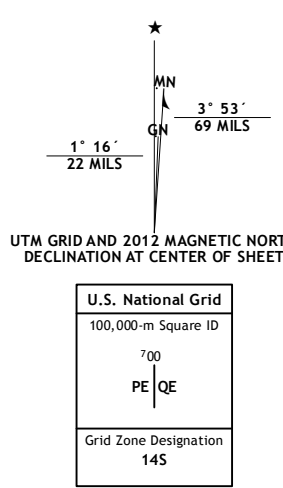
U.S. DEPARTMENT OF THE INTERIOR
U. S. GEOLOGICAL SURVEY



EARLSBORO QUADRANGLE
OKLAHOMA
7.5-MINUTE SERIES



Produced by the United States Geological Survey
North American Datum of 1983 (NAD83)
World Geodetic System of 1984 (WGS84) Projection and
1 000-meter grid; Universal Transverse Mercator, Zone 14S
10 000-foot ticks; Oklahoma Coordinate System of 1983
(south zone)



QUADRANGLE LOCATION

Atlatlate	Shawnee NE	Prague
Shawnee	Earlsboro	Prague SW
Brooksville	Maud	Seminole

ADJOINING 7.5 QUADRANGLES

CONTOUR INTERVAL 10 FEET
NORTH AMERICAN VERTICAL DATUM OF 1988
This map was produced to conform with the
National Geospatial Program US Topo Product Standard, 2011.
A metadata file associated with this product is draft version 0.6.6

EARLSBORO, OK
2012