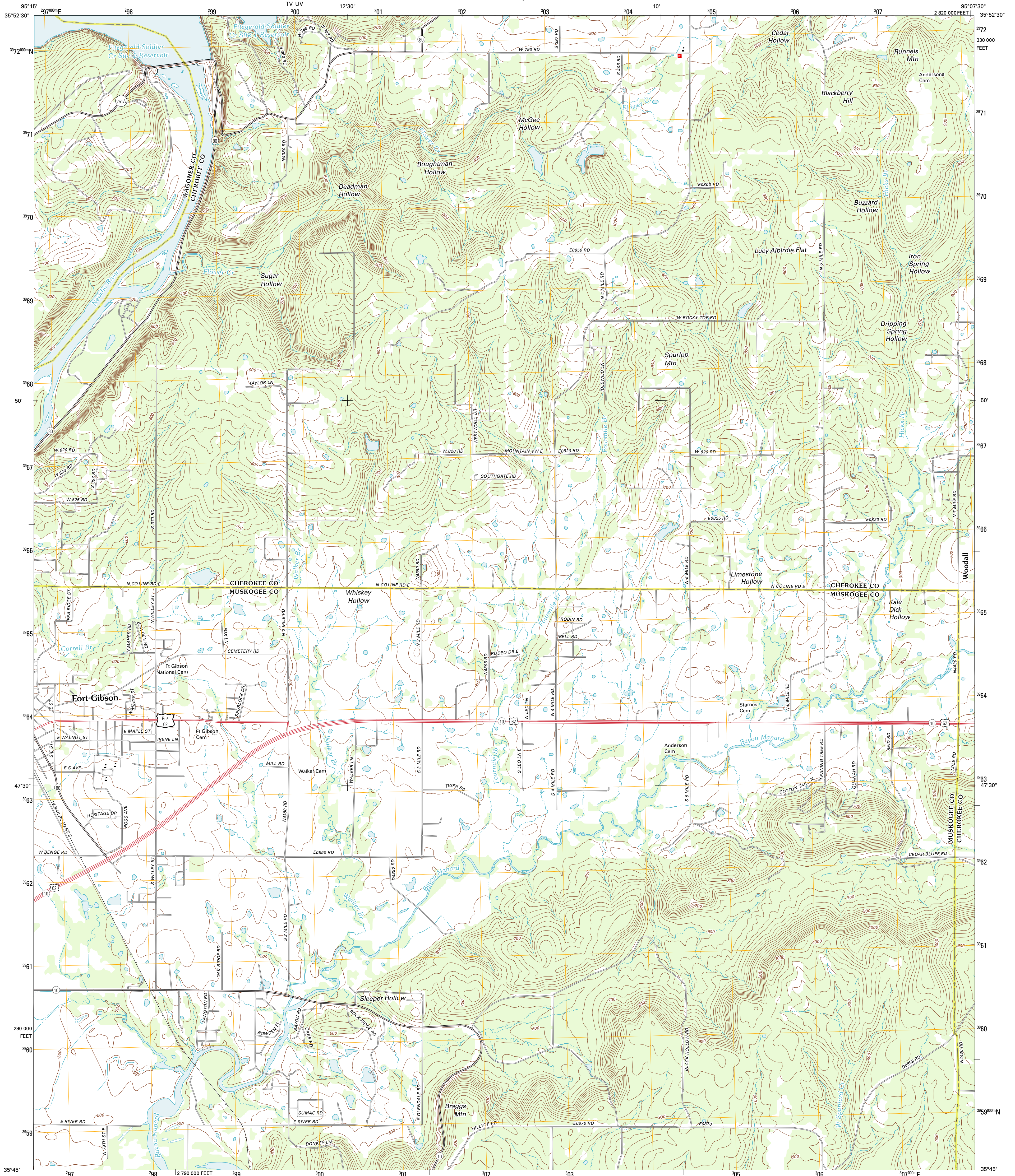




U.S. DEPARTMENT OF THE INTERIOR
U. S. GEOLOGICAL SURVEY

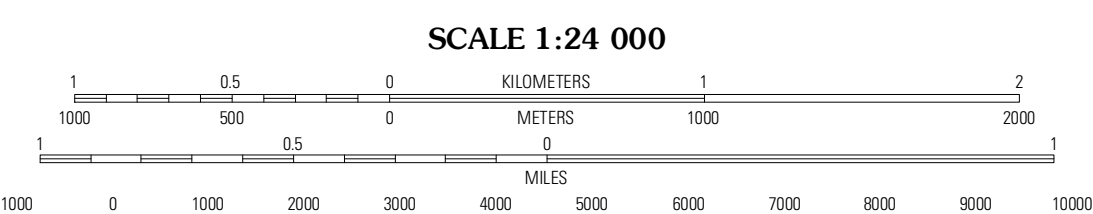
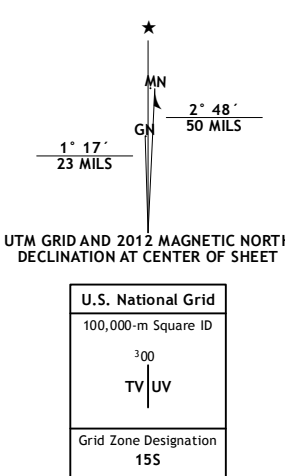


FORT GIBSON DAM QUADRANGLE
OKLAHOMA
7.5-MINUTE SERIES



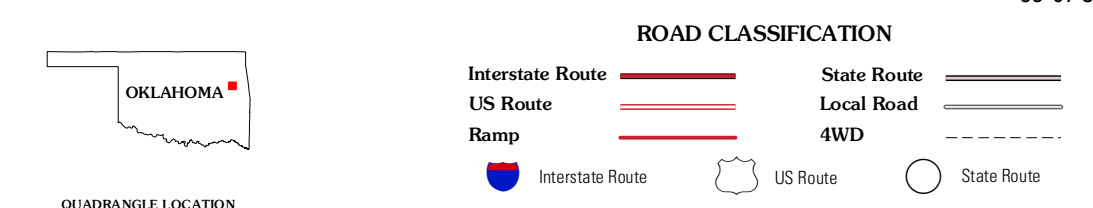
Produced by the United States Geological Survey
North American Datum of 1983 (NAD83)
World Geodetic System of 1984 (WGS84). Projection and
10 000-foot ticks: Oklahoma Coordinate System of 1983
(north zone)

Imagery.....NAP, August 2010
©2006-2011 TomTom
Names.....GNIS, 2012
Hydrography.....National Hydrography Dataset, 2010
Contours.....National Elevation Dataset, 2007
Boundaries.....Census, BWC, IBC, USGS, 1972 - 2012



CONTOUR INTERVAL 20 FEET
NORTH AMERICAN VERTICAL DATUM OF 1988

This map was produced to conform with the
National Geospatial Program US Topo Product Standard, 2011.
A metadata file associated with this product is draft version 0.6.6



QUADRANGLE LOCATION

Wagoner East	Hulbert	Thompson Corner
Northeast Muskogee	Fort Gibson Dam	Zab
Southeast Muskogee	Braggs	Qualls

FORT GIBSON DAM, OK
2012

ADJOINING 7.5 QUADRANGLES