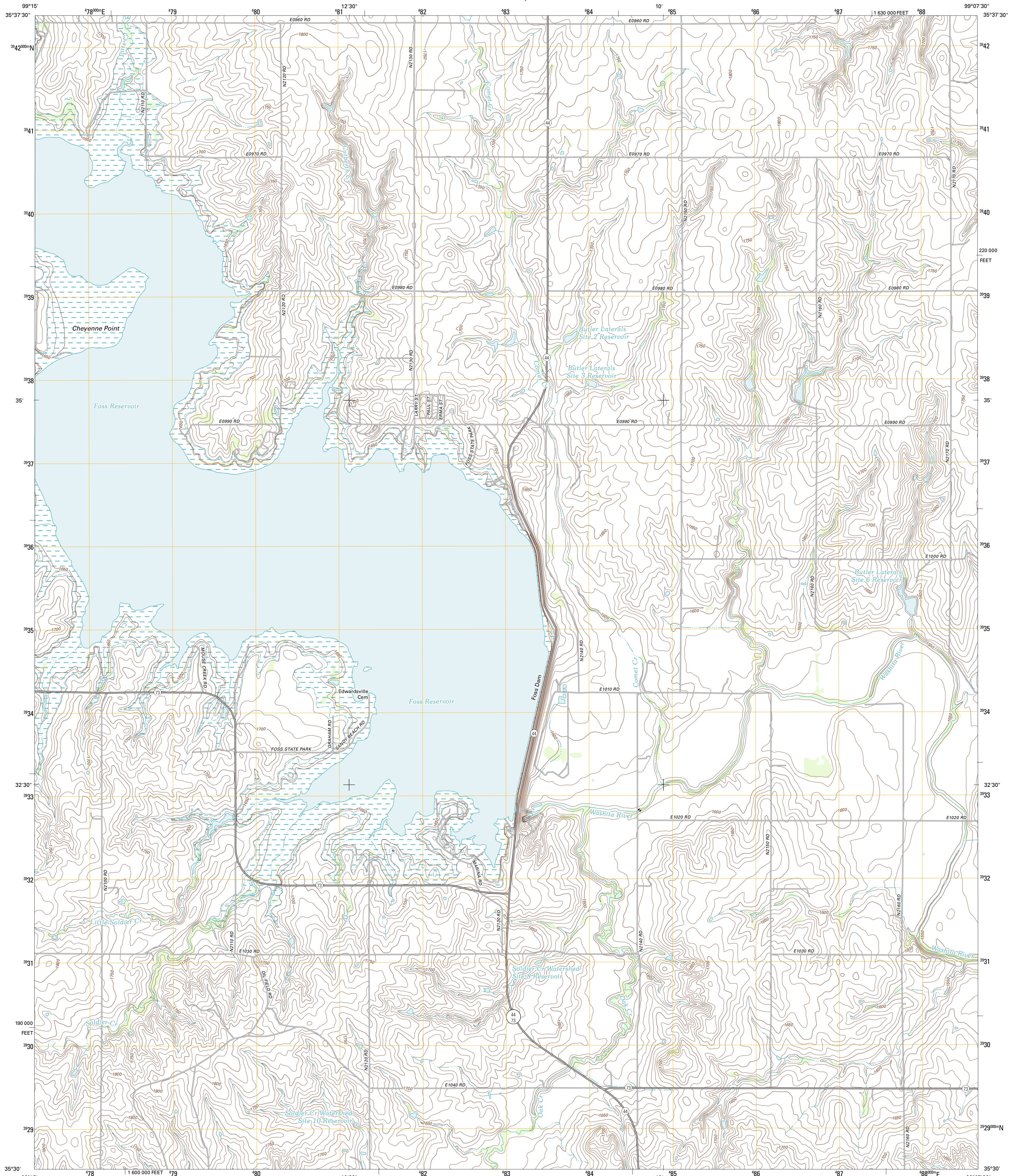




U.S. DEPARTMENT OF THE INTERIOR  
U. S. GEOLOGICAL SURVEY

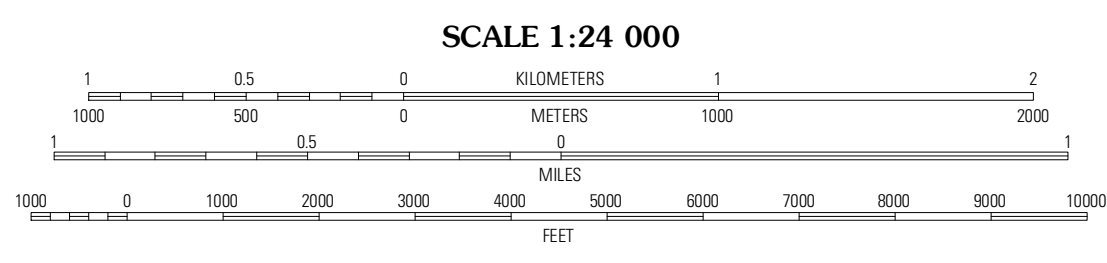
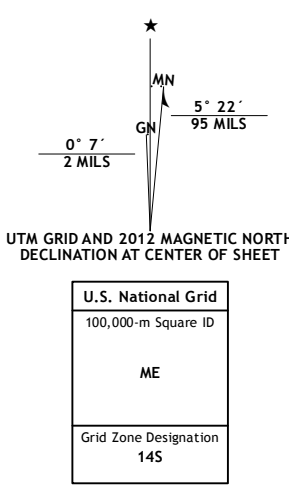


FOSS DAM QUADRANGLE  
OKLAHOMA-CUSTER CO.  
7.5-MINUTE SERIES

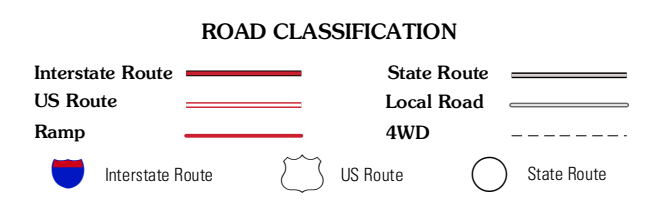
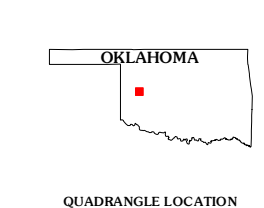


Produced by the United States Geological Survey  
North American Datum of 1983 (NAD83)  
World Geodetic System of 1984 (WGS84). Projection and  
1 000-meter grid: Universal Transverse Mercator, Zone 14S  
10 000-foot ticks: Oklahoma Coordinate System of 1983  
(north zone)

Imagery:.....NAIP, April 2010 - May 2010  
Roads:.....©2006-2011 TomTom  
Names:.....GNIS, 2012  
Hydrography:.....National Hydrography Dataset, 2010  
Contours:.....National Elevation Dataset, 2000  
Boundaries:.....Census, IBWC, IBC, USGS, 1972 - 2012



SCALE 1:24 000  
CONTOUR INTERVAL 10 FEET  
NORTH AMERICAN VERTICAL DATUM OF 1988  
This map was produced to conform with the  
National Geospatial Program US Topo Product Standard, 2011.  
A metadata file associated with this product is draft version 0.6.6



QUADRANGLE LOCATION

McClure	Butler	Anthorn
Carpeniter	Foss Dam	Stafford
Canuse	Foss	Dill City NE

FOSS DAM, OK  
2012

ADJOINING 7.5' QUADRANGLES