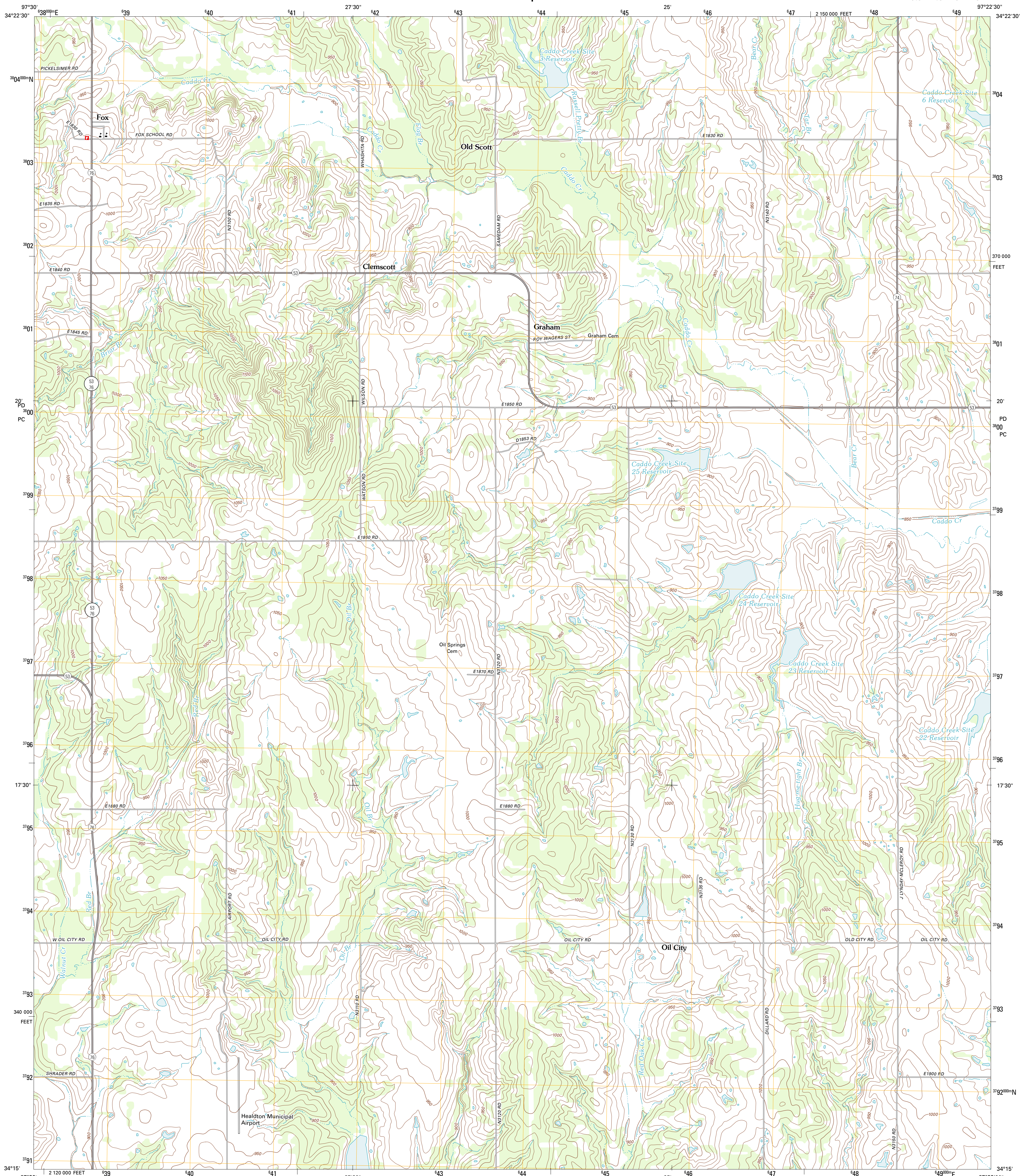




U.S. DEPARTMENT OF THE INTERIOR  
U. S. GEOLOGICAL SURVEY

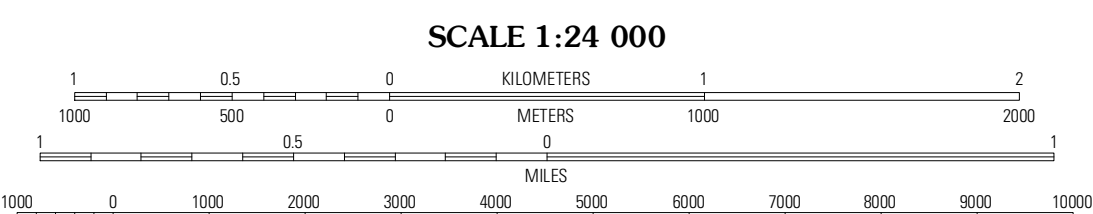
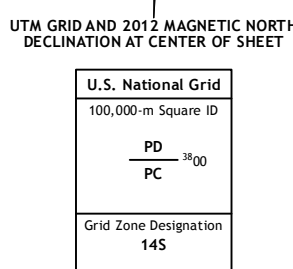


FOX QUADRANGLE  
OKLAHOMA-CARTER CO.  
7.5-MINUTE SERIES

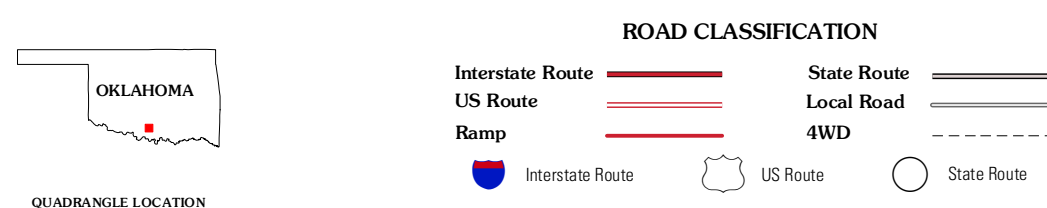


Produced by the United States Geological Survey  
North American Datum of 1983 (NAD83)  
World Geodetic System of 1984 (WGS84). Projection and  
10 000-foot ticks: Oklahoma Coordinate System of 1983  
(south zone)

Imagery.....NAP, May 2010  
Roads.....©2006-2011 TomTom  
Names.....GNIS, 2012  
Hydrography.....National Hydrography Dataset, 2010  
Contours.....National Elevation Dataset, 2007  
Boundaries.....Census, IBWC, IBC, USGS, 1972 - 2012



CONTOUR INTERVAL 10 FEET  
NORTH AMERICAN VERTICAL DATUM OF 1988  
This map was produced to conform with the  
National Geospatial Program US Topo Product Standard, 2011.  
A metadata file associated with this product is draft version 0.6.6



QUADRANGLE LOCATION

Ratliff City	Tanums	Fox NE
Cottonwood Creek	<b>Fox</b>	Milo
Ringling	Healdton	Lone Grove

FOX, OK  
2012

ADJOINING 7.5 QUADRANGLES