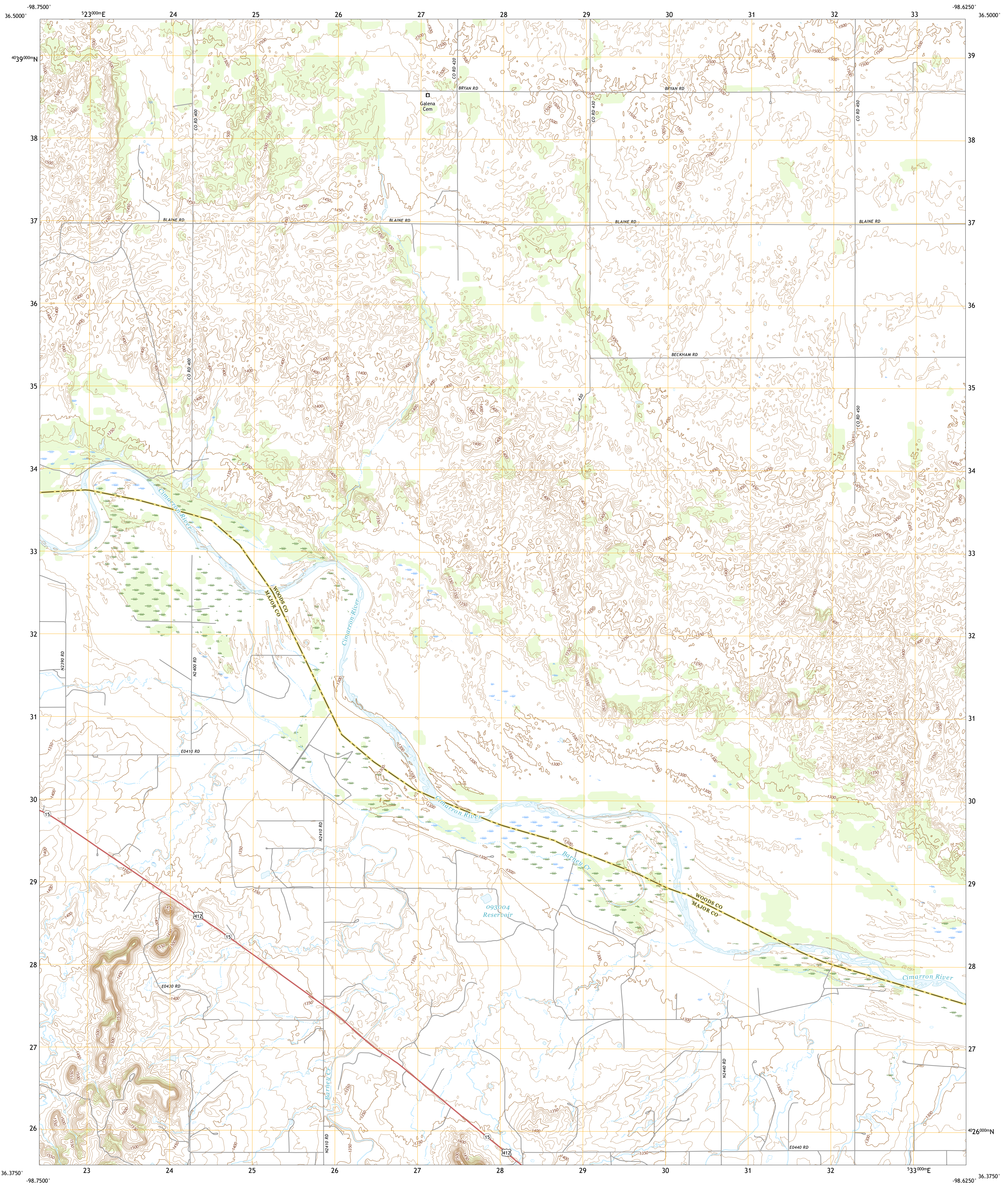




U.S. DEPARTMENT OF THE INTERIOR  
U.S. GEOLOGICAL SURVEY



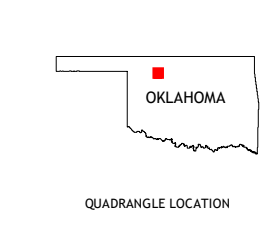
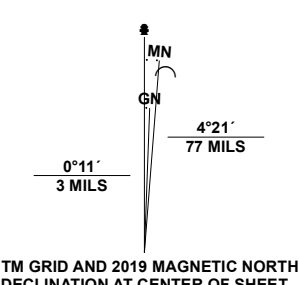
GLASS MOUNTAINS NW QUADRANGLE  
OKLAHOMA  
7.5-MINUTE SERIES



**Produced by the United States Geological Survey**

North American Datum of 1983 (NAD83)  
World Geodetic System of 1984 (WGS84). Projection and  
1 000-meter grid/Universal Transverse Mercator, Zone 14S  
This map is not a legal document. Boundaries may be  
generalized for this map scale. Private lands within government  
reservations may not be shown. Obtain permission before  
entering private lands.

Imagery.....NAIP, May 2017 - July 2017  
Roads.....U.S. Census Bureau, 2015 - 2018  
Names.....GNIS, 1999 - 2009  
Hydrography.....National Hydrography Dataset, 2006 - 2018  
Contours.....National Elevation Dataset, 2017  
Boundaries.....Multiple sources; see metadata file 2019 - 2021  
Public Land Survey System.....BLM, 2021  
Wetlands.....FWS National Wetlands Inventory 1981 - 2014



1	2	3
4	5	6
7	8	

ADJOINING QUADRANGLES

ROAD CLASSIFICATION	
	Expressway
	Secondary Hwy
	Ramp
	Local Connector
	Local Road
	4WD
	US Route
	State Route

- 1 Waynoka East
- 2 Dacoma SW
- 3 Dacoma SE
- 4 Togo
- 5 Glass Mountains NE
- 6 Phroso
- 7 Glass Mountains SW
- 8 Glass Mountains

