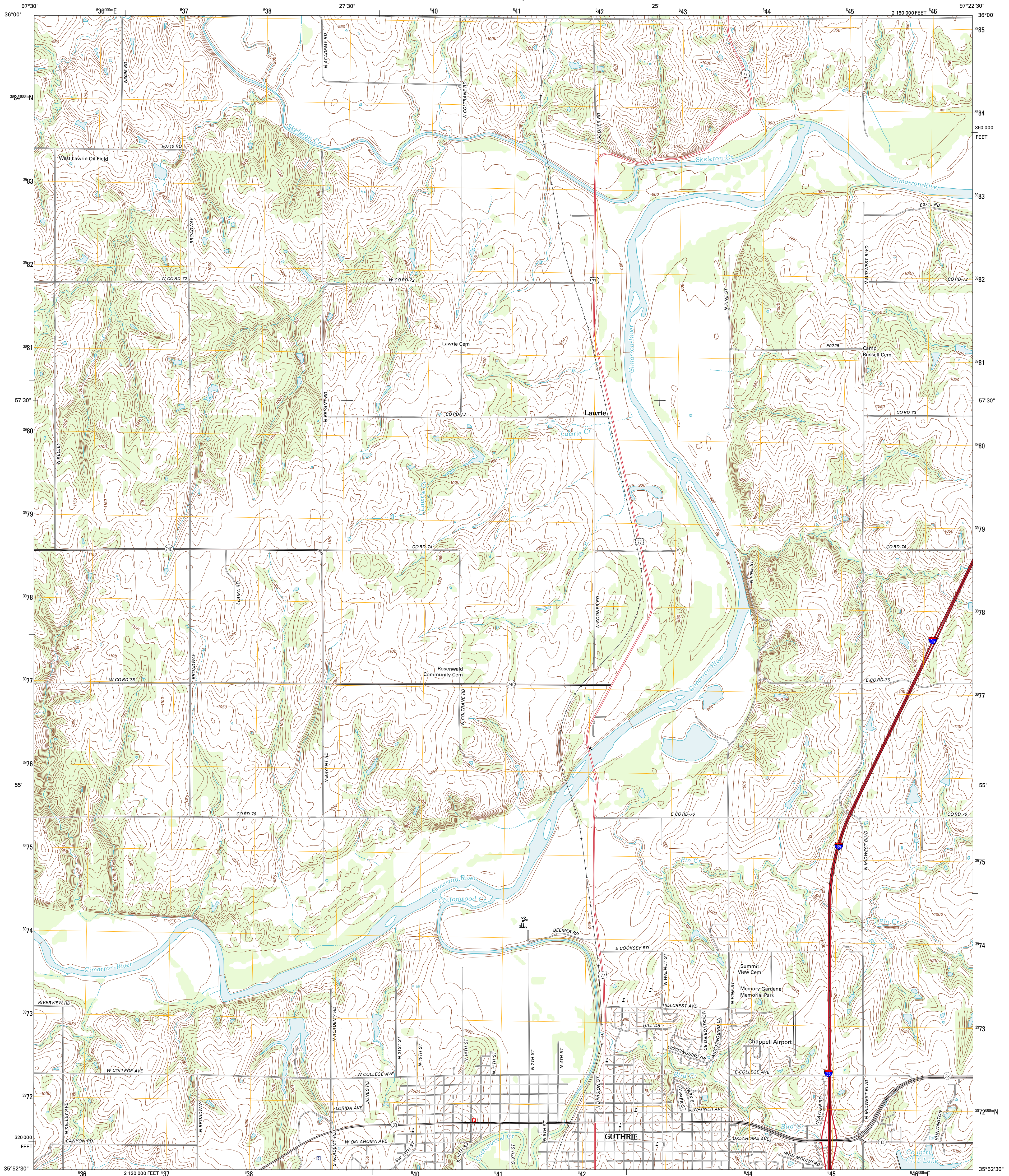




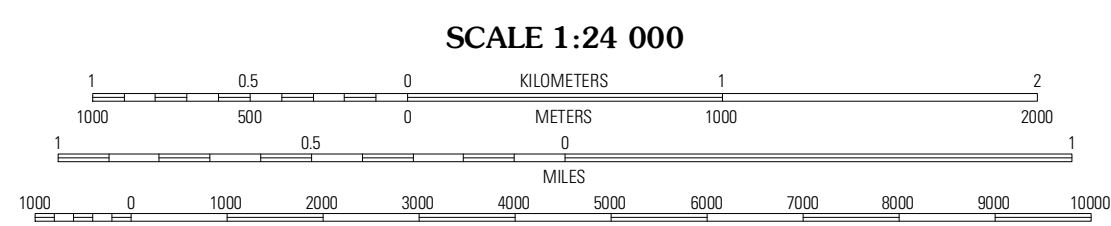
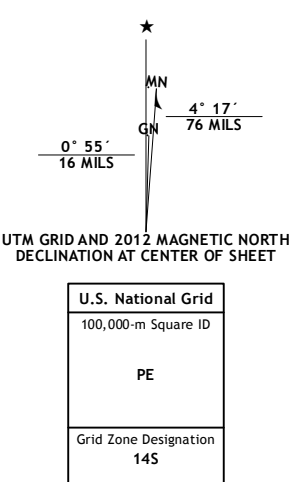
U.S. DEPARTMENT OF THE INTERIOR
U. S. GEOLOGICAL SURVEY



GUTHRIE NORTH QUADRANGLE
OKLAHOMA-LOGAN CO.
7.5-MINUTE SERIES



Produced by the United States Geological Survey
North American Datum of 1983 (NAD83)
World Geodetic System of 1984 (WGS84). Projection and
1 000-meter grid: Universal Transverse Mercator, Zone 14S
10 000-foot ticks: Oklahoma Coordinate System of 1983
(north zone)



CONTOUR INTERVAL 10 FEET
NORTH AMERICAN VERTICAL DATUM OF 1988
This map was produced to conform with the
National Geospatial Program US Topo Product Standard, 2011.
A metadata file associated with this product is draft version 0.6.6

ROAD CLASSIFICATION

- Interstate Route (thick red line with shield)
- US Route (red line with shield)
- State Route (thin red line)
- Local Road (black line)
- 4WD (dashed black line)

QUADRANGLE LOCATION

Bridge Creek	Mulhall	Clear Creek
Crescent	Guthrie North	Langston
Nowata	Guthrie South	Guthrie SE

**GUTHRIE NORTH, OK
2012**

ADJOINING 7.5 QUADRANGLES

Imagery.....NAIP, May 2010
Roads.....©2006-2011 TomTom
Names.....GNIS, 2012
Hydrography.....National Hydrography Dataset, 2010
Contours.....National Elevation Dataset, 2008
Boundaries.....Census, IBWC, USGS, 1972 - 2012