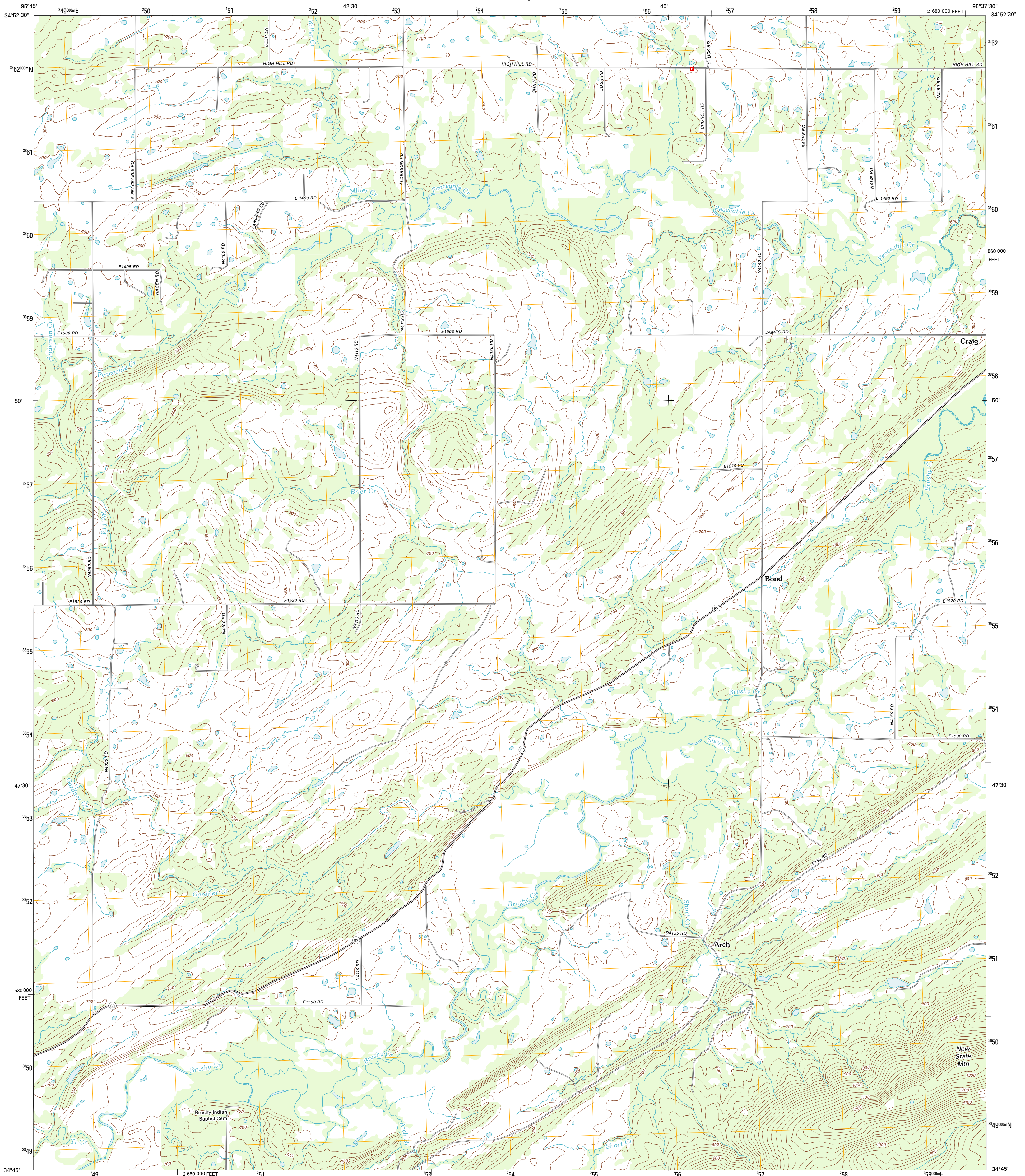




U.S. DEPARTMENT OF THE INTERIOR
U. S. GEOLOGICAL SURVEY

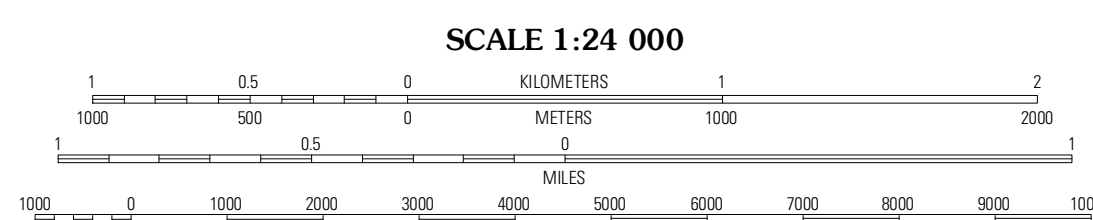
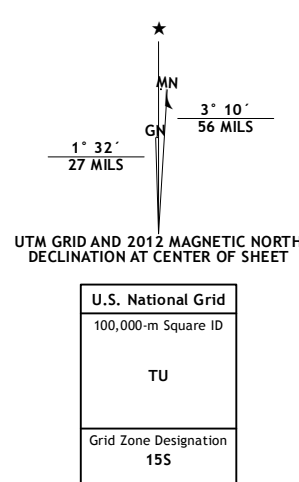


HARTSHORNE SW QUADRANGLE
OKLAHOMA-PITTSBURG CO.
7.5-MINUTE SERIES

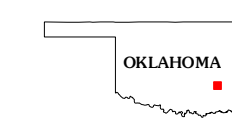


Produced by the United States Geological Survey
North American Datum of 1983 (NAD83)
World Geodetic System of 1984 (WGS84), Projection and
1 000-meter grid: Universal Transverse Mercator, Zone 15S
10 000-foot ticks: Oklahoma Coordinate System of 1983
(south zone)

Imagery: NAF, August 2010
Roads: ©2006-2011 TomTom
Names: GNIS, 2012
Hydrography: National Hydrography Dataset, 2010
Contours: National Elevation Dataset, 2007
Boundaries: Census, IBWC, IBC, USGS, 1972 - 2012



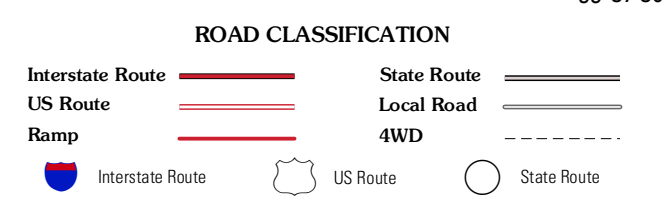
CONTOUR INTERVAL 20 FEET
NORTH AMERICAN VERTICAL DATUM OF 1988
This map was produced to conform with the
National Geospatial Program US Topo Product Standard, 2011.
A metadata file associated with this product is draft version 0.6.6



QUADRANGLE LOCATION

McAlester	Krebs	Admon
Savanna	Hartshorne SW	Hartshorne
Pittsburg	Ti	Counts

ADJOINING 7.5 QUADRANGLES



HARTSHORNE SW, OK
2012