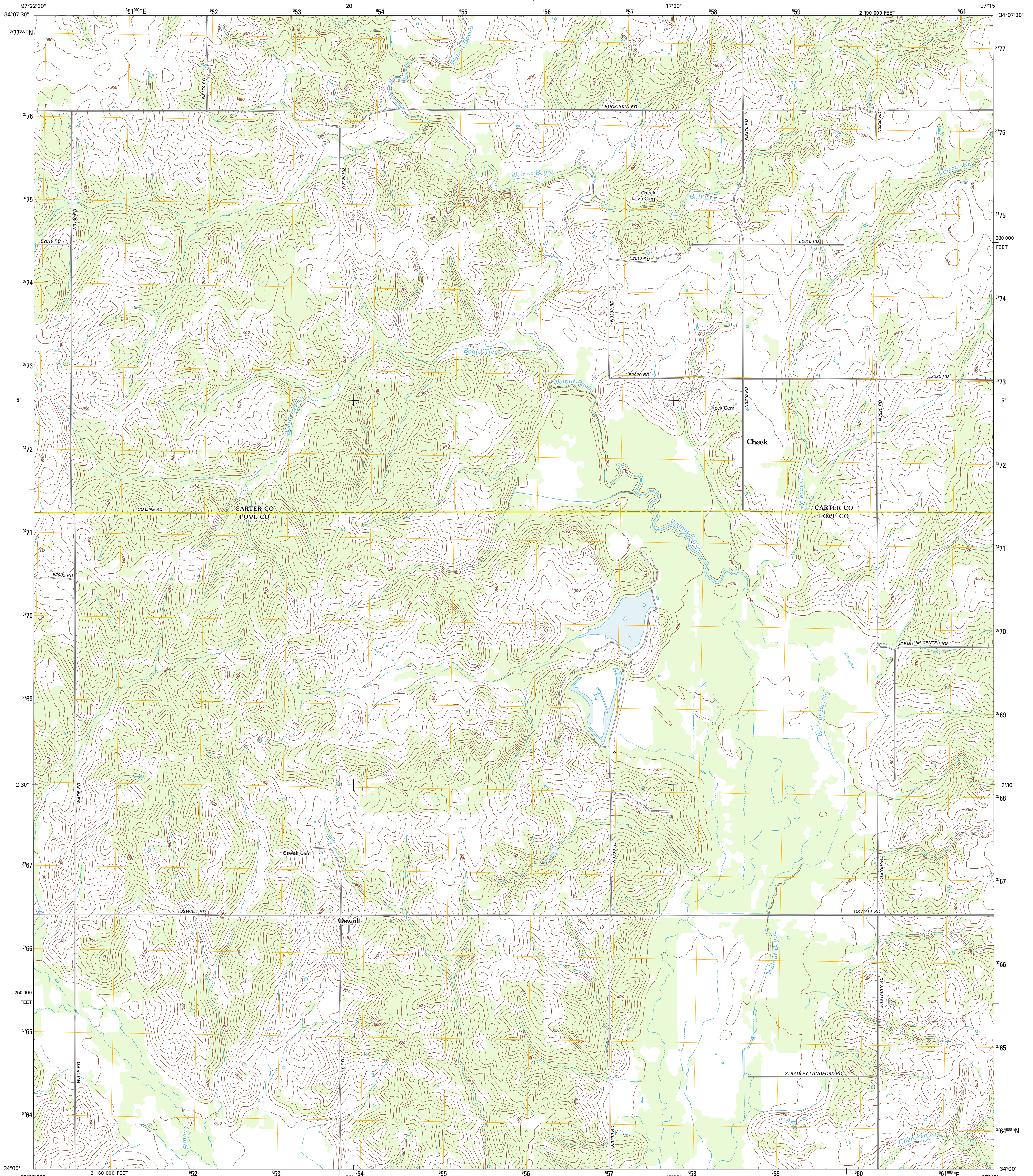




U.S. DEPARTMENT OF THE INTERIOR
U. S. GEOLOGICAL SURVEY

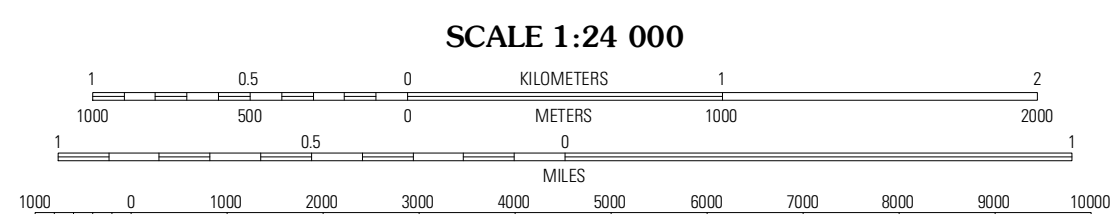
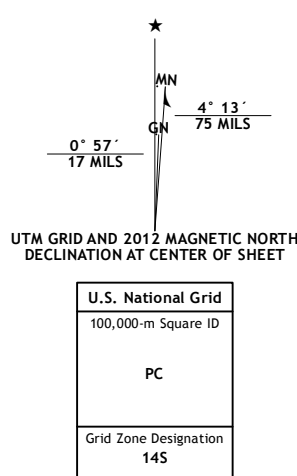


HEALDTON SE QUADRANGLE
OKLAHOMA
7.5-MINUTE SERIES



Produced by the United States Geological Survey
North American Datum of 1983 (NAD83)
World Geodetic System of 1984 (WGS84). Projection and
1 000-meter grid: Universal Transverse Mercator, Zone 14S
10 000-foot ticks: Oklahoma Coordinate System of 1983
(south zone)

Imagery: N/AIP, May 2010
Roads: ©2006-2011 TomTom
Names: GNS, 2012
Hydrography: National Hydrography Dataset, 2010
Contours: National Elevation Dataset, 2007
Boundaries: Censu, IBWC, IBC, USGS, 1972 - 2012



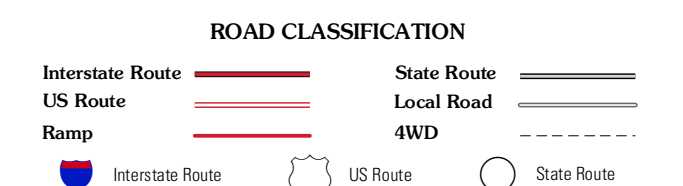
CONTOUR INTERVAL 10 FEET
NORTH AMERICAN VERTICAL DATUM OF 1988
This map was produced to conform with the
National Geospatial Program US Topo Product Standard, 2011.
A metadata file associated with this product is draft version 0.6.6



QUADRANGLE LOCATION

Healdton	Lone Grove	Ardmore West
Healdton SW	Healdton SE	Overbrook
Leon North	Burreysville	Marietta West

ADJOINING 7.5' QUADRANGLES



HEALDTON SE, OK
2012