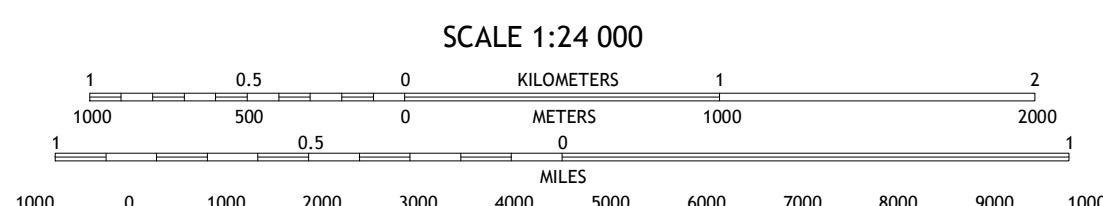
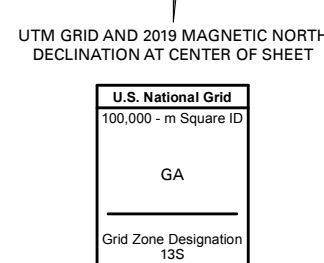
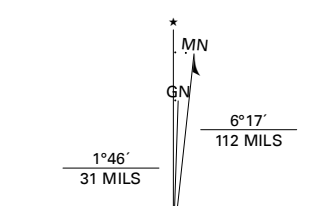


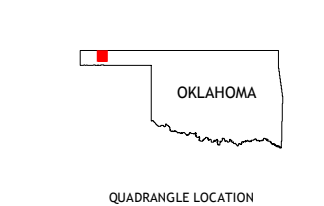
Produced by the United States Geological Survey

North American Datum of 1983 (NAD83)
World Geodetic System of 1984 (WGS84), Projection and
1 000-meter grid/Universal Transverse Mercator, Zone 13S
This map is not a legal document. Boundaries may be
generalized for this map scale. Private lands within government
reservations may not be shown. Obtain permission before
entering private lands.

Imagery.....NAIP, May 2017 - July 2017
Roads.....U.S. Census Bureau, 2015
Names.....GNIS, 1979 - 2018
Hydrography.....National Hydrography Dataset, 2004 - 2018
Contours.....National Elevation Dataset, 2007
Boundaries.....Multiple sources; see metadata file, 2016 - 2017
Public Land Survey System.....BLM, 2018
Wetlands.....FWS National Wetlands Inventory 2003 - 2005



CONTOUR INTERVAL 10 FEET
NORTH AMERICAN VERTICAL DATUM OF 1988
This map was produced to conform with the
National Geospatial Program US Topo Product Standard, 2011.
A metadata file associated with this product is draft version 0.6.18



ADJOINING QUADRANGLES

1	2	3
4	5	6
7	8	

1 Sturgis NW
2 Sturgis
3 Elkhardt South
4 Keyes East
5 Eva
6 Griggs NW
7 Griggs NE
8 Tetchum NW

