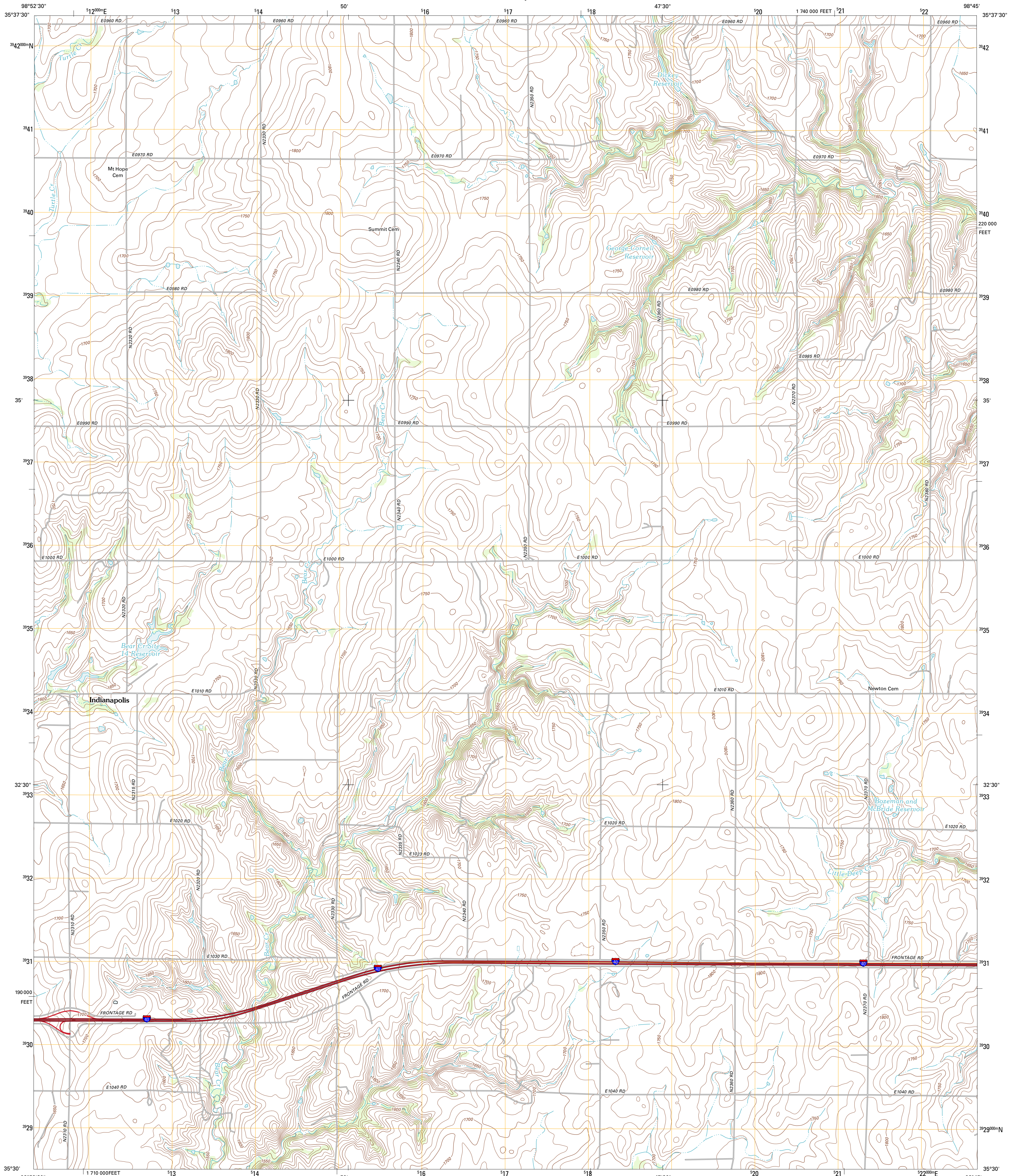




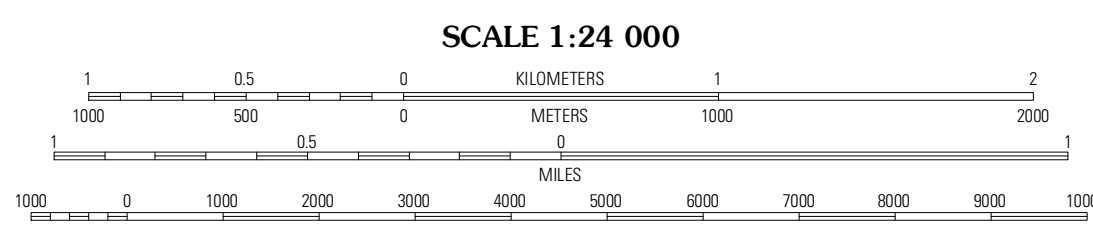
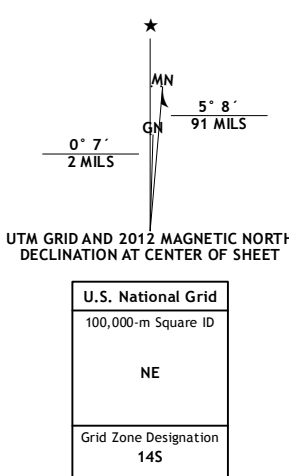
U.S. DEPARTMENT OF THE INTERIOR
U. S. GEOLOGICAL SURVEY



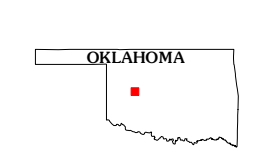
INDIANAPOLIS QUADRANGLE
OKLAHOMA-CUSTER CO.
7.5-MINUTE SERIES



Produced by the United States Geological Survey
North American Datum of 1983 (NAD83)
World Geodetic System of 1984 (WGS84)
Projection and 10 000-meter grid: Universal Transverse Mercator, Zone 14S
10 000-foot ticks: Oklahoma Coordinate System of 1983 (north zone)

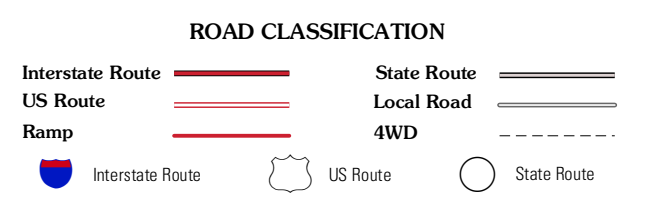


CONTOUR INTERVAL 10 FEET
NORTH AMERICAN VERTICAL DATUM OF 1988
This map was produced to conform with the National Geospatial Program US Topo Product Standard, 2011. A metadata file associated with this product is draft version 0.6.6



QUADRANGLE LOCATION

Custer City	Clinton NE	Weatherford NW
Clinton	Indianapolis	Weatherford
Besse	Corn	Crowder Lake



INDIANAPOLIS, OK
2012

ADJOINING 7.5' QUADRANGLES