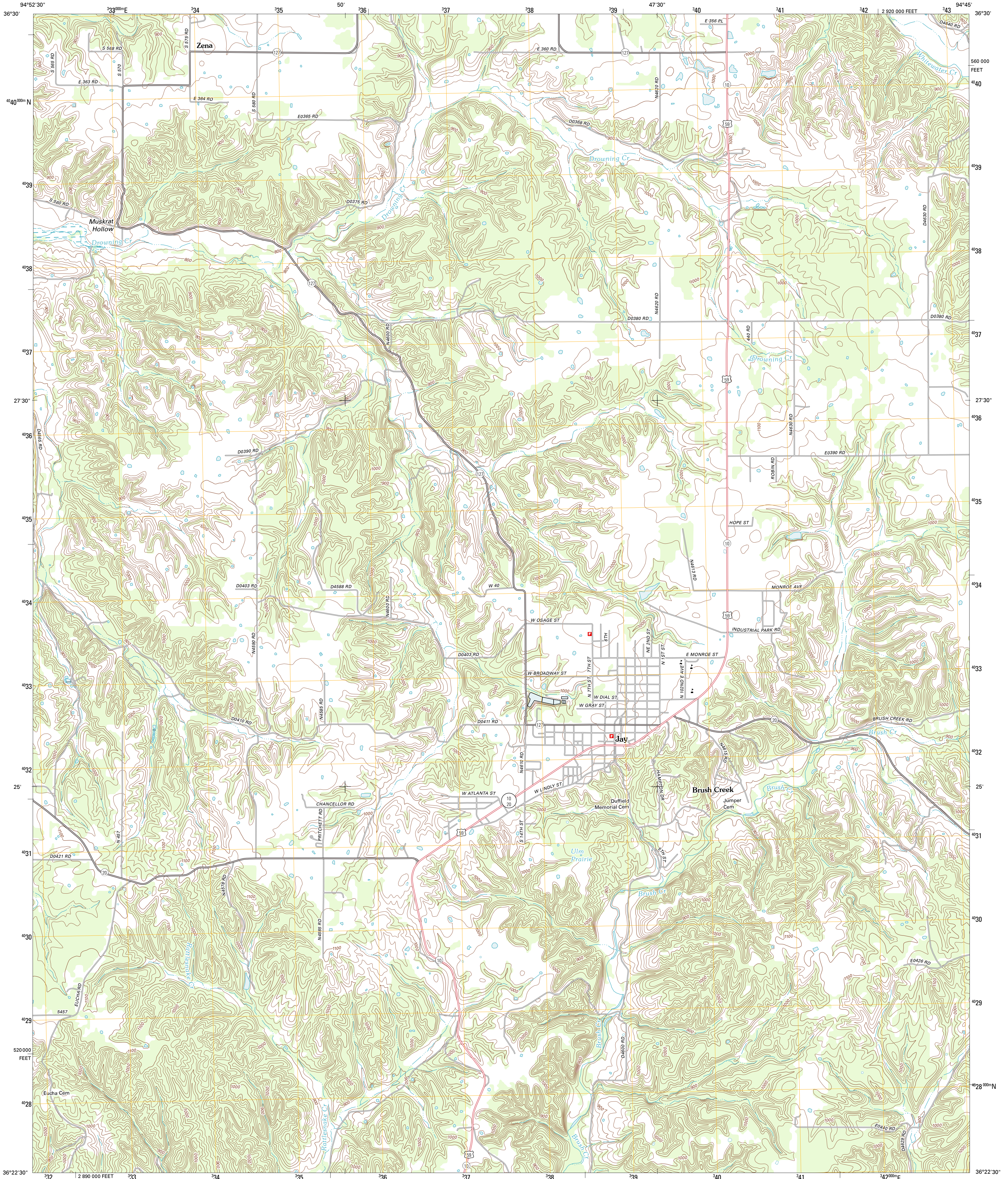




U.S. DEPARTMENT OF THE INTERIOR
U. S. GEOLOGICAL SURVEY

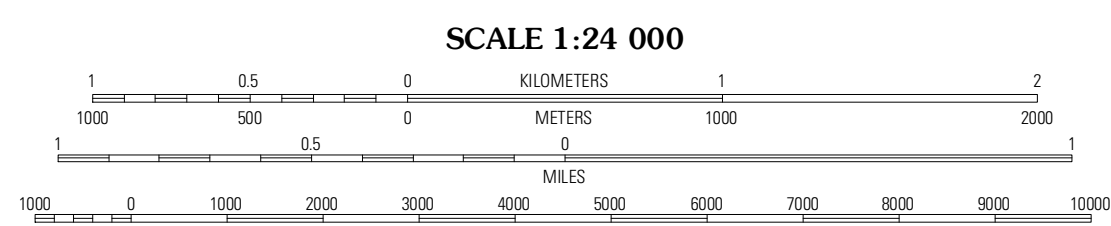
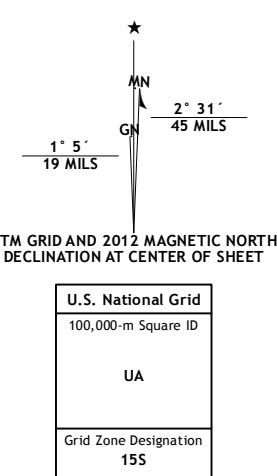


JAY QUADRANGLE
OKLAHOMA-DELAWARE CO.
7.5-MINUTE SERIES

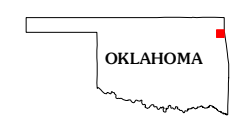


Produced by the United States Geological Survey
North American Datum of 1983 (NAD83)
World Geospatial System of 1984 (WGS84) Projection and
1 000-foot grid; Universal Transverse Mercator, Zone 15S
10 000-foot ticks; Oklahoma Coordinate System of 1983
(north zone)

Imagery: NAIP, August 2010
Roads: ©2006-2011 TomTom
Names: GNS, 2012
Hydrography: National Hydrography Dataset, 2010
Contours: National Elevation Dataset, 2007
Boundaries: Census, IBWC, IBC, USGS, 1972 - 2012

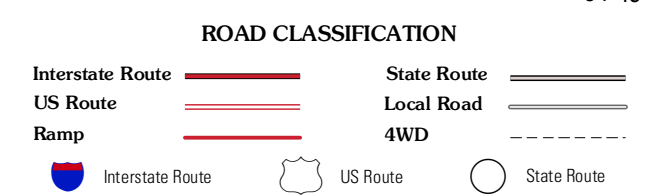


CONTOUR INTERVAL 20 FEET
NORTH AMERICAN VERTICAL DATUM OF 1988
This map was produced to conform with the
National Geospatial Program US Topo Product Standard, 2011.
A metadata file associated with this product is draft version 0.6.6



QUADRANGLE LOCATION

Berke	Grove	Dodge
Chibeta	Jay	Sycamore
Lake Eucha West	Lake Eucha East	Cokcord



JAY, OK
2012

ADJOINING 7.5' QUADRANGLES