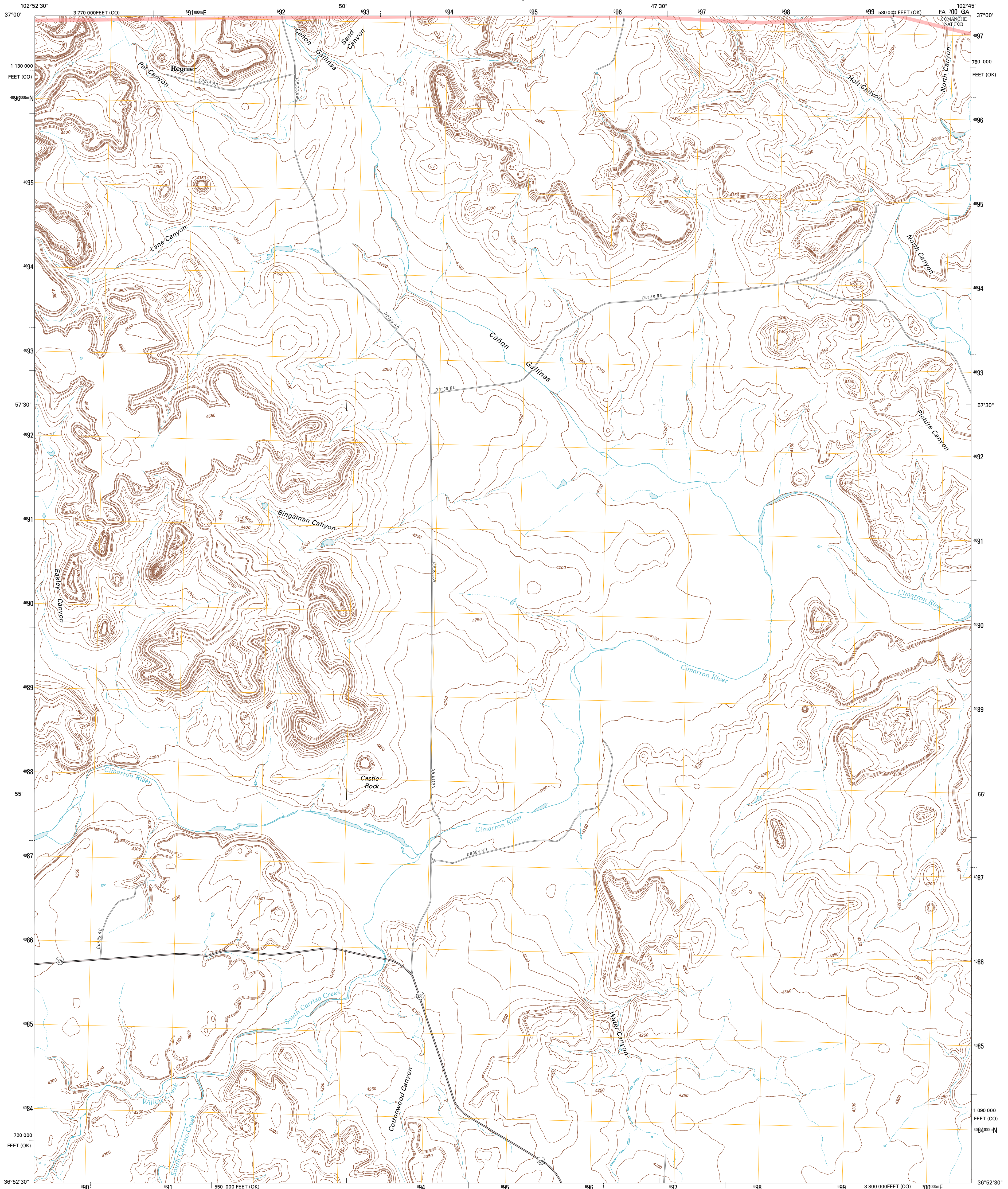




U.S. DEPARTMENT OF THE INTERIOR
U. S. GEOLOGICAL SURVEY

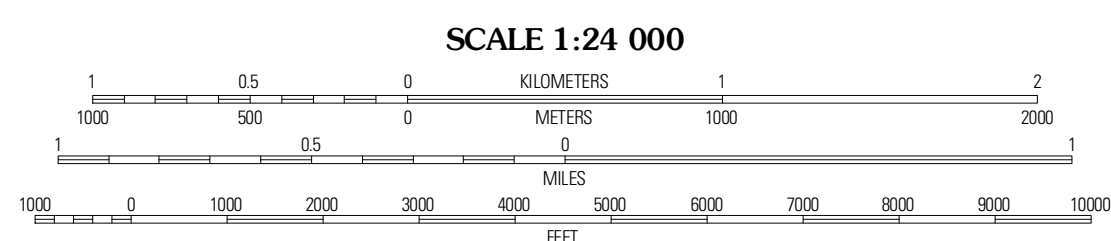
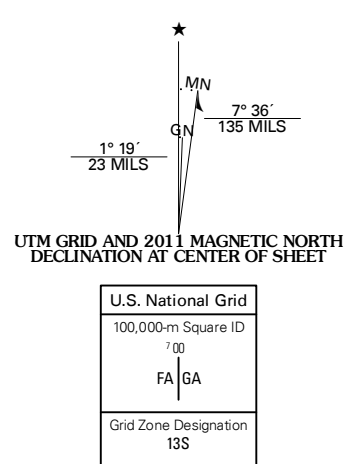


KENTON NE QUADRANGLE
OKLAHOMA-COLORADO
7.5-MINUTE SERIES



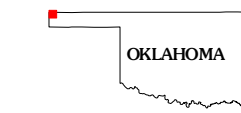
Produced by the United States Geological Survey
North American Datum of 1983 (NAD83)
World Geodetic System of 1984 (WGS84). Projection and
1 000-meter grid: Universal Transverse Mercator, Zone 13S
10 000-foot ticks: Oklahoma Coordinate System of 1983
(north zone), Colorado Coordinate System of 1983 (south
zone)

Imagery:.....NAP, May 2008
Roads:.....©2006-2010 Tele Atlas
Roads within US Forest Service Lands:.....FS Topo Data
with limited Forest Service updates, 2009
Names:.....GNIS, 2010
Hydrography:.....National Hydrography Dataset, 2008
Contours:.....National Elevation Dataset, 2006



CONTOUR INTERVAL 10 FEET
NORTH AMERICAN VERTICAL DATUM OF 1988

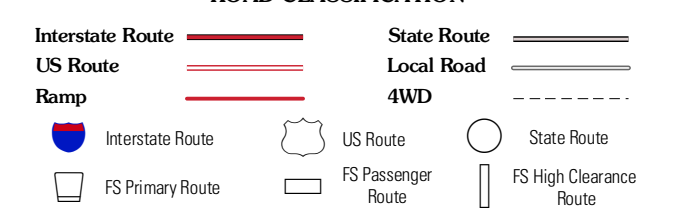
This map was produced to conform with version 0.5.10 of the
draft USGS Standards for 7.5-Minute Quadrangle Maps.
A metadata file associated with this product is draft version 0.5.12



QUADRANGLE LOCATION

Big Hole Canyon	Tubs Springs	Campo SW
Kenton	Kenton NE	Autograph Cliff NW
Kenton SW	Kenton SE	Autograph Cliff

ROAD CLASSIFICATION



Check with local Forest Service unit
for current travel conditions and restrictions.

KENTON NE, OK-CO
2011

ADJOINING 7.5 QUADRANGLES