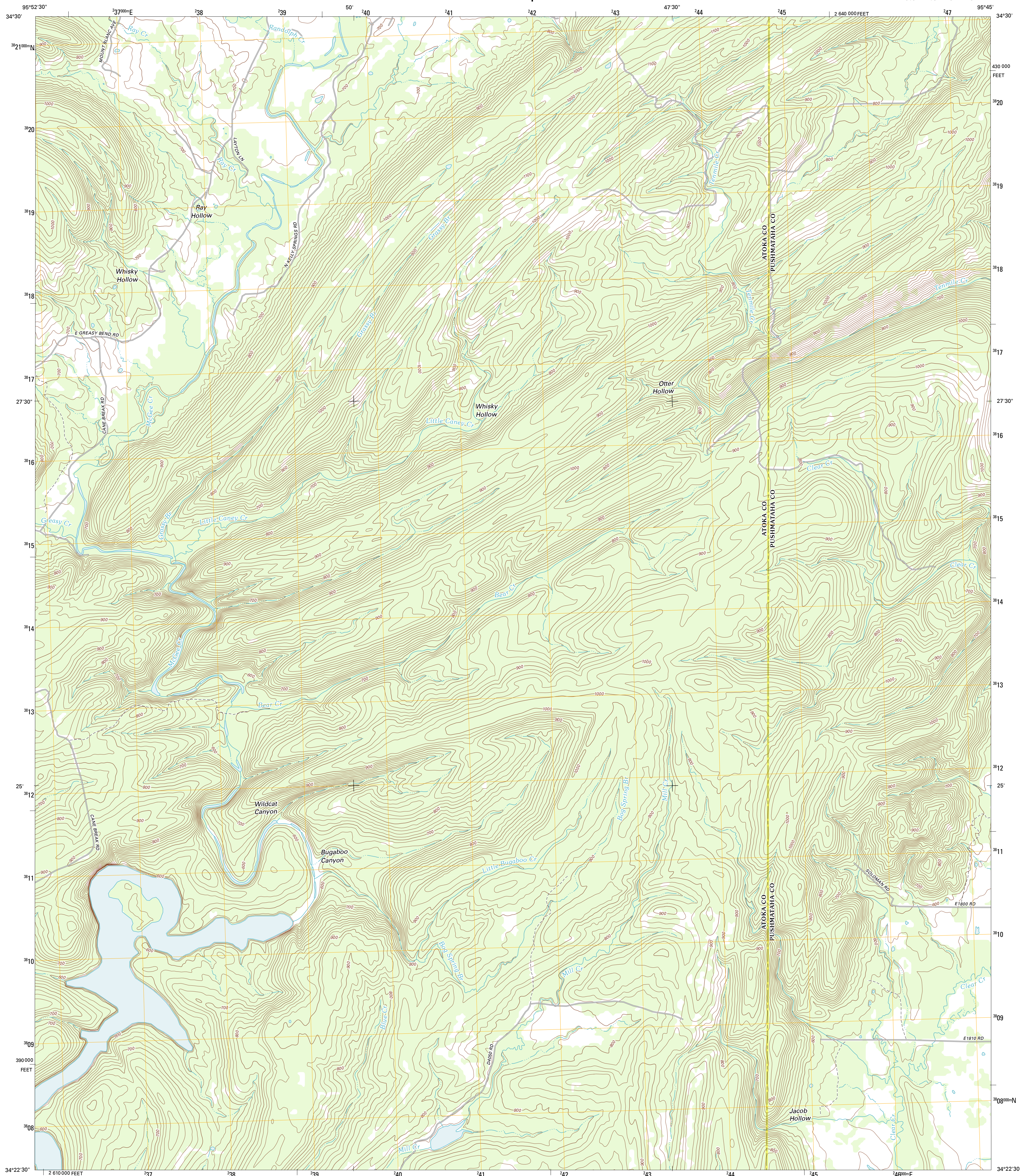




U.S. DEPARTMENT OF THE INTERIOR  
U. S. GEOLOGICAL SURVEY

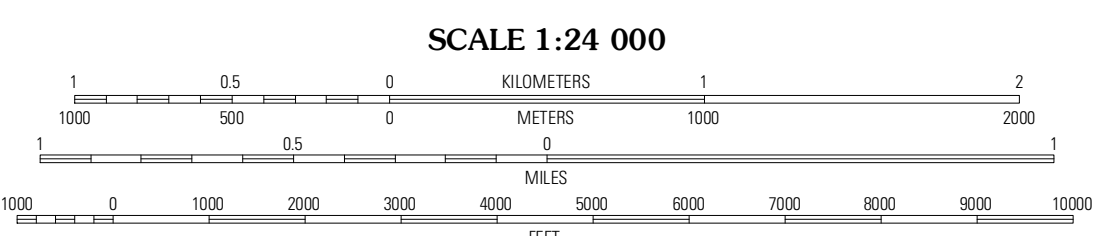
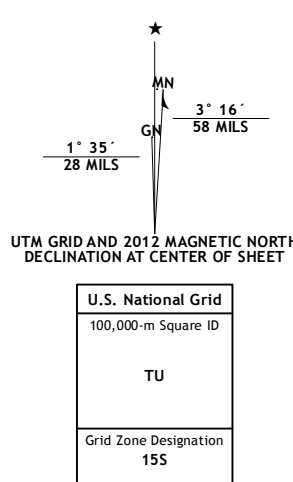


LANE NE QUADRANGLE  
OKLAHOMA  
7.5-MINUTE SERIES

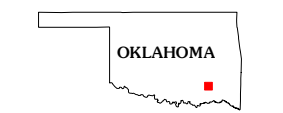


Produced by the United States Geological Survey  
North American Datum of 1983 (NAD83)  
World Geodetic System of 1984 (WGS84). Projection and  
1 000-meter grid: Universal Transverse Mercator, Zone 15S  
10 000-foot ticks: Oklahoma Coordinate System of 1983  
(south zone)

Imagery.....NAP, August 2010  
Roads.....©2006-2011 TomTom  
Names.....GNIS, 2012  
Hydrography.....National Hydrography Dataset, 2010  
Contours.....National Elevation Dataset, 2007  
Boundaries.....Census, BWC, IBC, USGS, 1972 - 2012

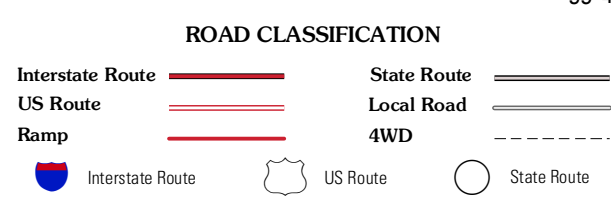


CONTOUR INTERVAL 20 FEET  
NORTH AMERICAN VERTICAL DATUM OF 1988  
This map was produced to conform with the  
National Geospatial Program US Topo Product Standard, 2011.  
A metadata file associated with this product is draft version 0.6.6



QUADRANGLE LOCATION

Limestone	Redden	Daisy
Lane NW	Lane NE	Jumbo
Lane	Farris	Moyers



LANE NE, OK  
2012

ADJOINING 7.5 QUADRANGLES