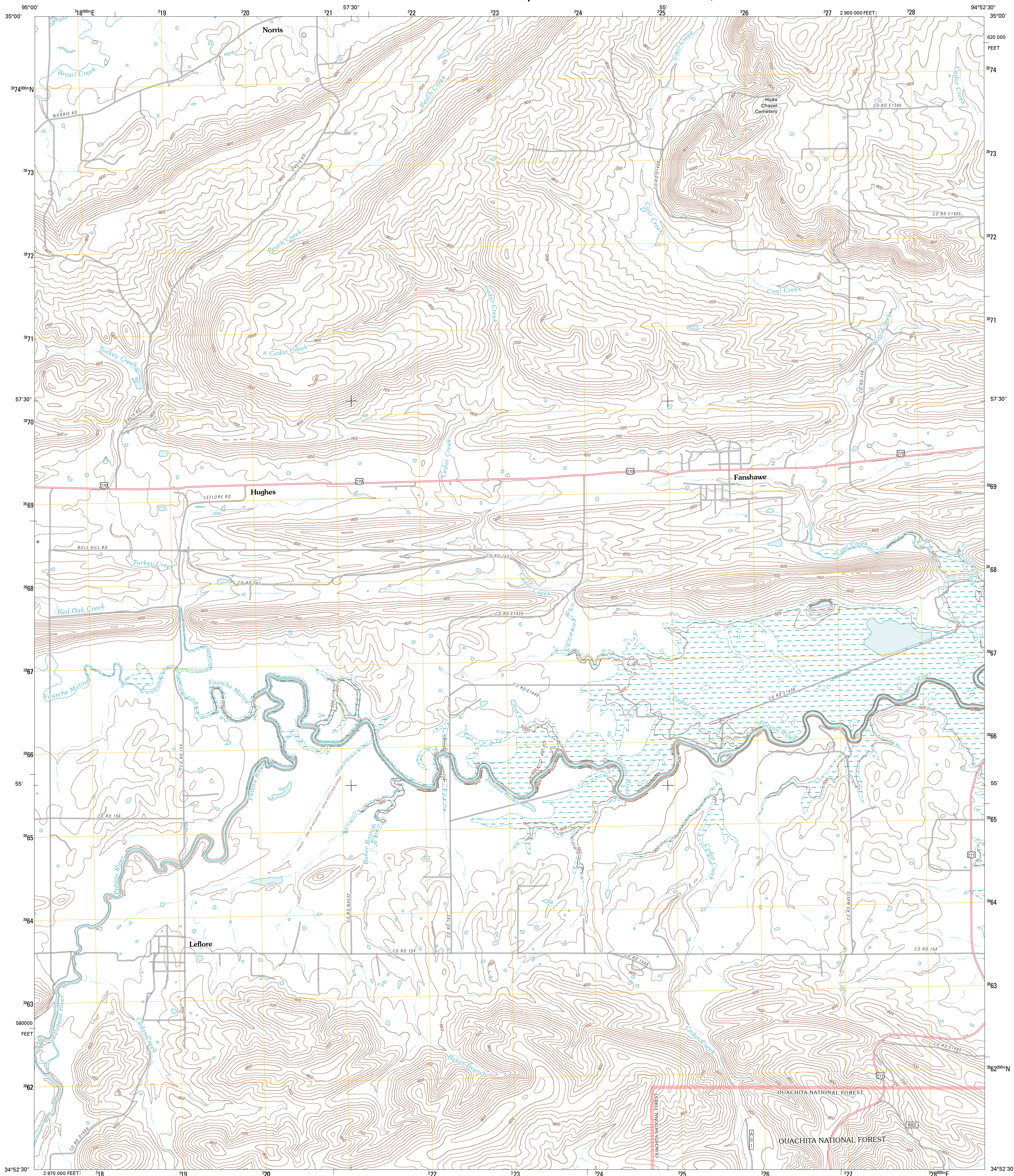




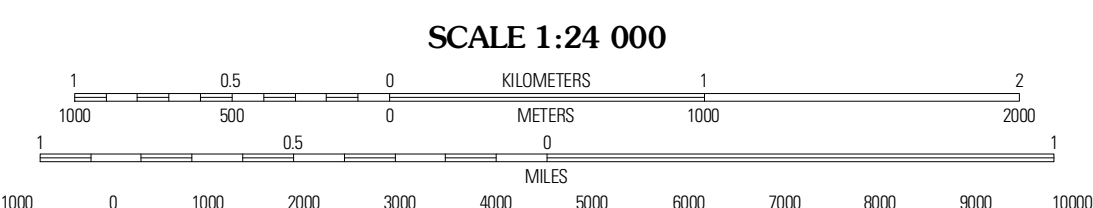
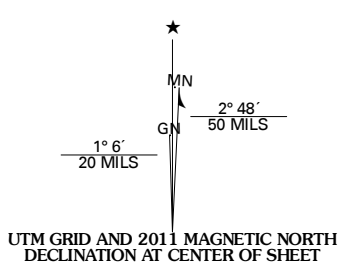
U.S. DEPARTMENT OF THE INTERIOR
U. S. GEOLOGICAL SURVEY



LEFLORE QUADRANGLE
OKLAHOMA
7.5-MINUTE SERIES



Produced by the United States Geological Survey
North American Datum of 1983 (NAD83)
World Geodetic System of 1984 (WGS84) Projection and
1 000-meter grid: Universal Transverse Mercator, Zone 15S
10 000-foot ticks: Oklahoma Coordinate System of 1983
(south zone)



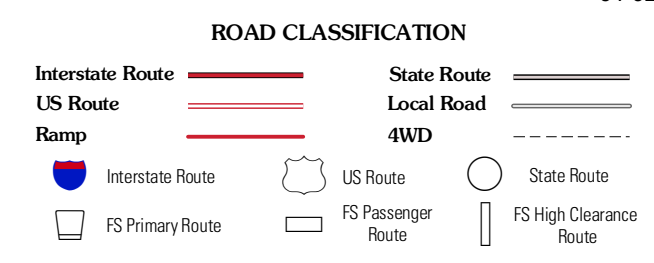
CONTOUR INTERVAL 20 FEET
NORTH AMERICAN VERTICAL DATUM OF 1988
This map was produced to conform with version 0.5.10 of the
draft USGS Standards for 7.5-Minute Quadrangle Maps.
A metadata file associated with this product is draft version 0.5.12



QUADRANGLE LOCATION

Lequire	McCurtain SW	Potato Peaks
Red Oak	Leflore	Summerfield
Talibbia	Blackjack Ridge	Leflore SE

ADJOINING 7.5' QUADRANGLES



LEFLORE, OK
2011

Imagery:.....N.A.I.P., May 2008
Roads:.....©2006-2010 Tele Atlas
Roads within US Forest Service Lands:.....FSTopo Data
with limited Forest Service updates, 2009
Names:.....GNS, 2010
Hydrography:.....National Hydrography Dataset, 2008
Contours:.....National Elevation Dataset, 2003

U.S. National Grid

100,000-m Square ID
UU
Grid Zone Designation
15S