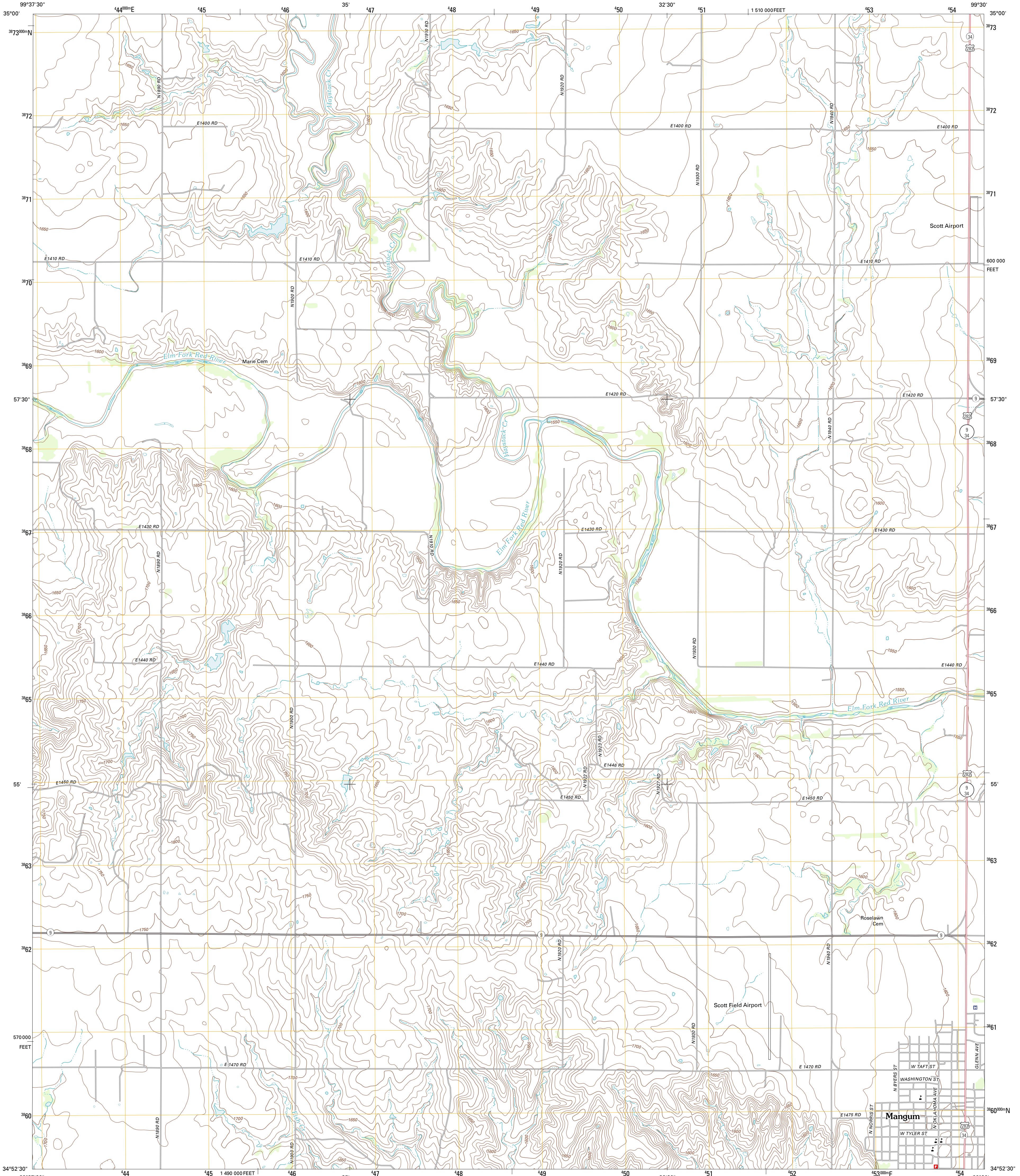




U.S. DEPARTMENT OF THE INTERIOR  
U. S. GEOLOGICAL SURVEY

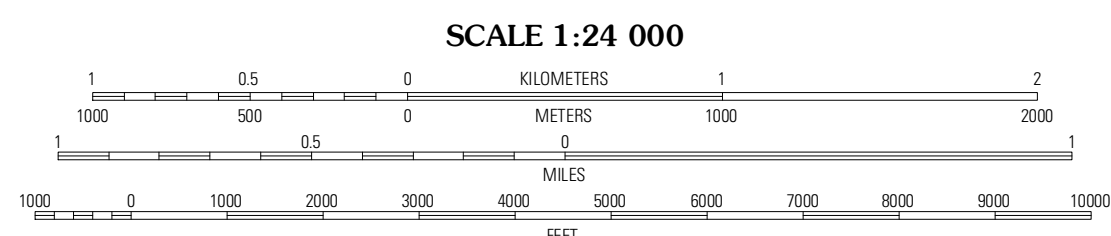
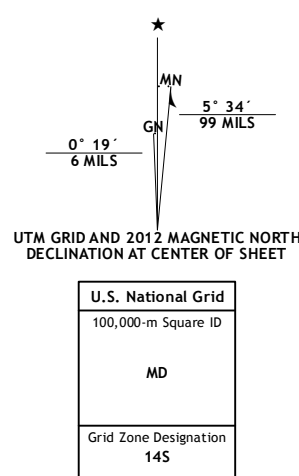


MANGUM NORTH QUADRANGLE  
OKLAHOMA-GREER CO.  
7.5-MINUTE SERIES

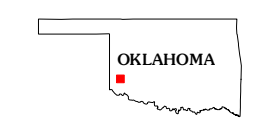


Produced by the United States Geological Survey  
North American Datum of 1983 (NAD83)  
World Geodetic System of 1984 (WGS84). Projection and  
1 000-meter grid: Universal Transverse Mercator, Zone 14S  
10 000-foot ticks: Oklahoma Coordinate System of 1983  
(south zone)

Imagery: NADP, April 2010  
Roads: ©2006-2011 TomTom  
Names: GNIS, 2012  
Hydrography: National Hydrography Dataset, 2010  
Contours: National Elevation Dataset, 2000  
Boundaries: Census, IBWC, IBC, USGS, 1972 - 2012

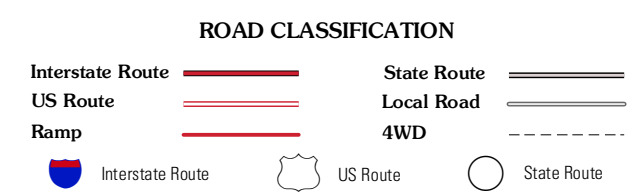


CONTOUR INTERVAL 10 FEET  
NORTH AMERICAN VERTICAL DATUM OF 1988  
This map was produced to conform with the  
National Geospatial Program US Topo Product Standard, 2011.  
A metadata file associated with this product is draft version 0.6.6



QUADRANGLE LOCATION

Plains	Willow	Lake Creek
Reed	<b>Mangum North</b>	Granite
Russell	Mangum South	Hester



MANGUM NORTH, OK  
2012

ADJOINING 7.5 QUADRANGLES