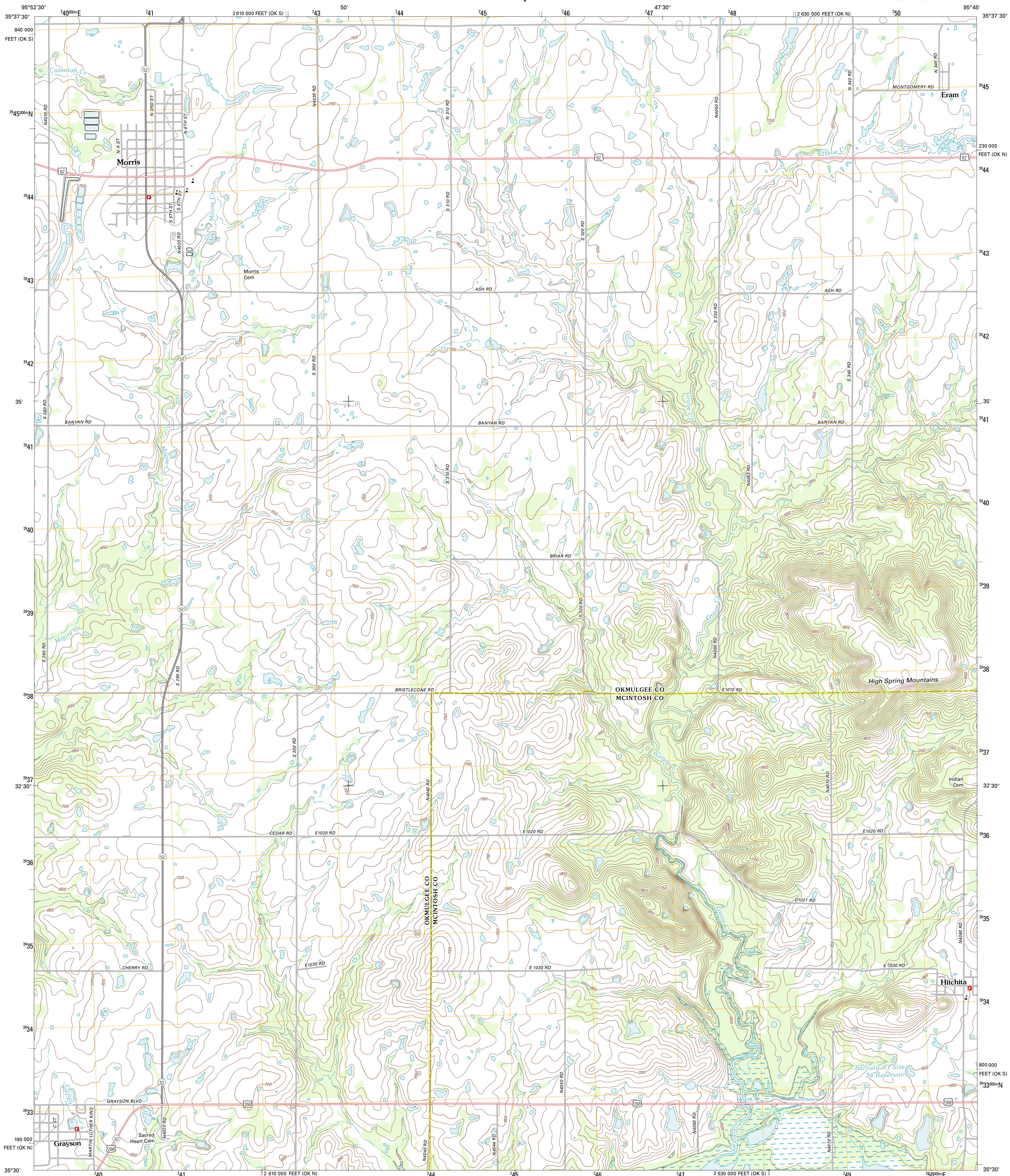




U.S. DEPARTMENT OF THE INTERIOR
U. S. GEOLOGICAL SURVEY



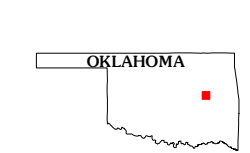
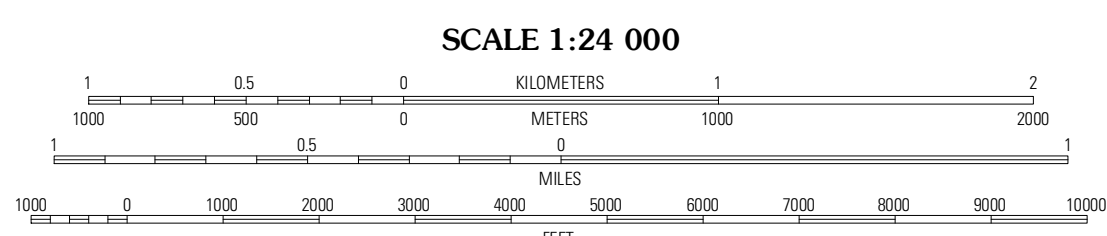
MORRIS QUADRANGLE
OKLAHOMA
7.5-MINUTE SERIES



Produced by the United States Geological Survey
North American Datum of 1983 (NAD83)
World Geodetic System of 1984 (WGS84) Projection and
1 000-meter grid: Universal Transverse Mercator, Zone 15S
10 000-foot ticks: Oklahoma Coordinate System of 1983
(north and south zones)

UTM GRID AND 2011 MAGNETIC NORTH DECLINATION AT CENTER OF SHEET

U.S. National Grid
100,000-m Square ID
TV
Grid Zone Designation
15S



QUADRANGLE LOCATION

Okmulgee North	Okmulgee NE	Boytton
Okmulgee South	Morris	Council Hill
Hemietta	Hoffman	Pierce

ROAD CLASSIFICATION

- Interstate Route
- US Route
- Ramp
- State Route
- Local Road
- 4WD

Imagery.....NAIP, August 2010
Roads.....©2006-2011 TomTom
Names.....GNIS, 2012
Hydrography.....National Hydrography Dataset, 2010
Contours.....National Elevation Dataset, 2007
Boundaries.....Census, BWC, BIC, USGS, 1972 - 2012

CONTOUR INTERVAL 10 FEET
NORTH AMERICAN VERTICAL DATUM OF 1988

This map was produced to conform with the
National Geospatial Program US Topo Product Standard, 2011.
A metadata file associated with this product is draft version 0.6.6

MORRIS, OK
2012

ADJOINING 7.5' QUADRANGLES