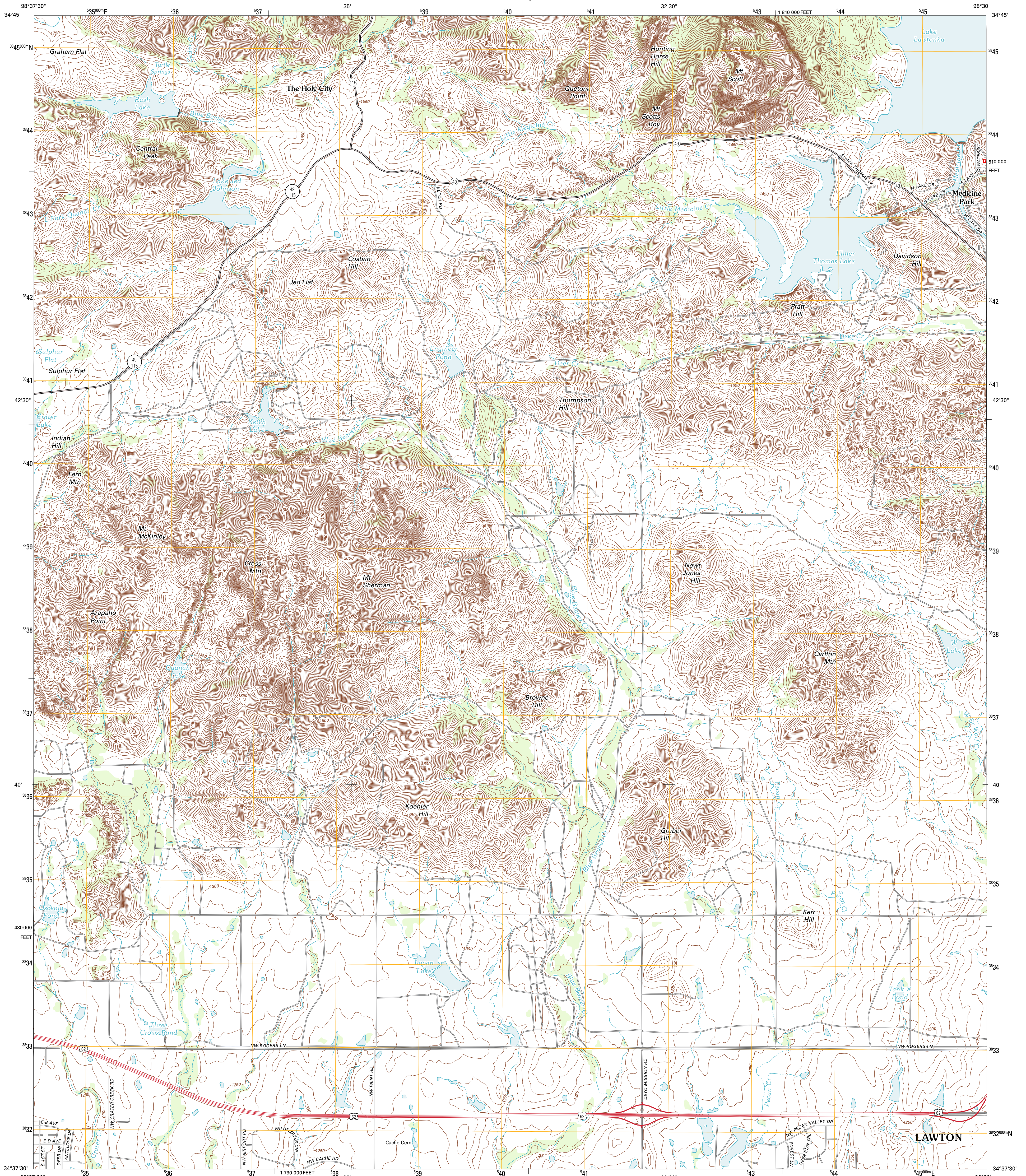




U.S. DEPARTMENT OF THE INTERIOR
U. S. GEOLOGICAL SURVEY



MOUNT SCOTT QUADRANGLE
OKLAHOMA-COMANCHE CO.
7.5-MINUTE SERIES

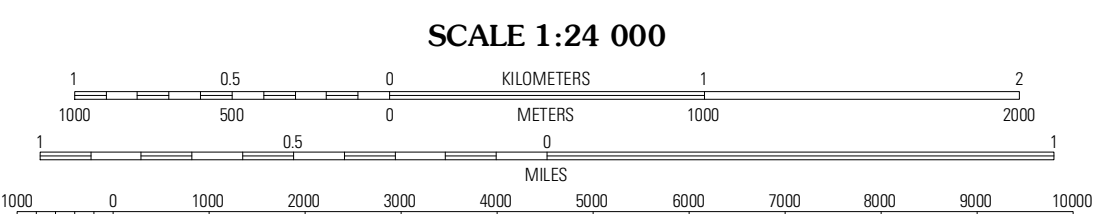


Produced by the United States Geological Survey
North American Datum of 1983 (NAD83)
World Geodetic System of 1984 (WGS84), Projection and
1 000-foot grid: Universal Transverse Mercator, Zone 14S
10 000-foot ticks: Oklahoma Coordinate System of 1983
(south zone)

Imagery.....NAIP, May 2010
Roads.....©2006-2011 TomTom
Names.....GNIS, 2012
Hydrography.....National Hydrography Dataset, 2010
Contours.....National Elevation Dataset, 2007
Boundaries.....Census, IBWC, IBC, USGS, 1972 - 2012

UTM GRID AND 2012 MAGNETIC NORTH
DECLINATION AT CENTER OF SHEET

| |
|-----------------------|
| U.S. National Grid |
| 100,000-m Square ID |
| ND |
| Grid Zone Designation |
| 14S |



CONTOUR INTERVAL 10 FEET
NORTH AMERICAN VERTICAL DATUM OF 1988

This map was produced to conform with the
National Geospatial Program US Topo Product Standard, 2011.
A metadata file associated with this product is draft version 0.6.6



QUADRANGLE LOCATION

| | | |
|------------------|-------------|---------------|
| Saddle Mountain | Meers | Richards Spur |
| Quannah Mountain | Mount Scott | Fort Sill |
| Post Oak Creek | Tampa | Lawton |

ROAD CLASSIFICATION

| | |
|------------------|-------------|
| Interstate Route | State Route |
| US Route | Local Road |
| Ramp | 4WD |
| Interstate Route | US Route |
| | State Route |

MOUNT SCOTT, OK
2012

ADJOINING 7.5 QUADRANGLES