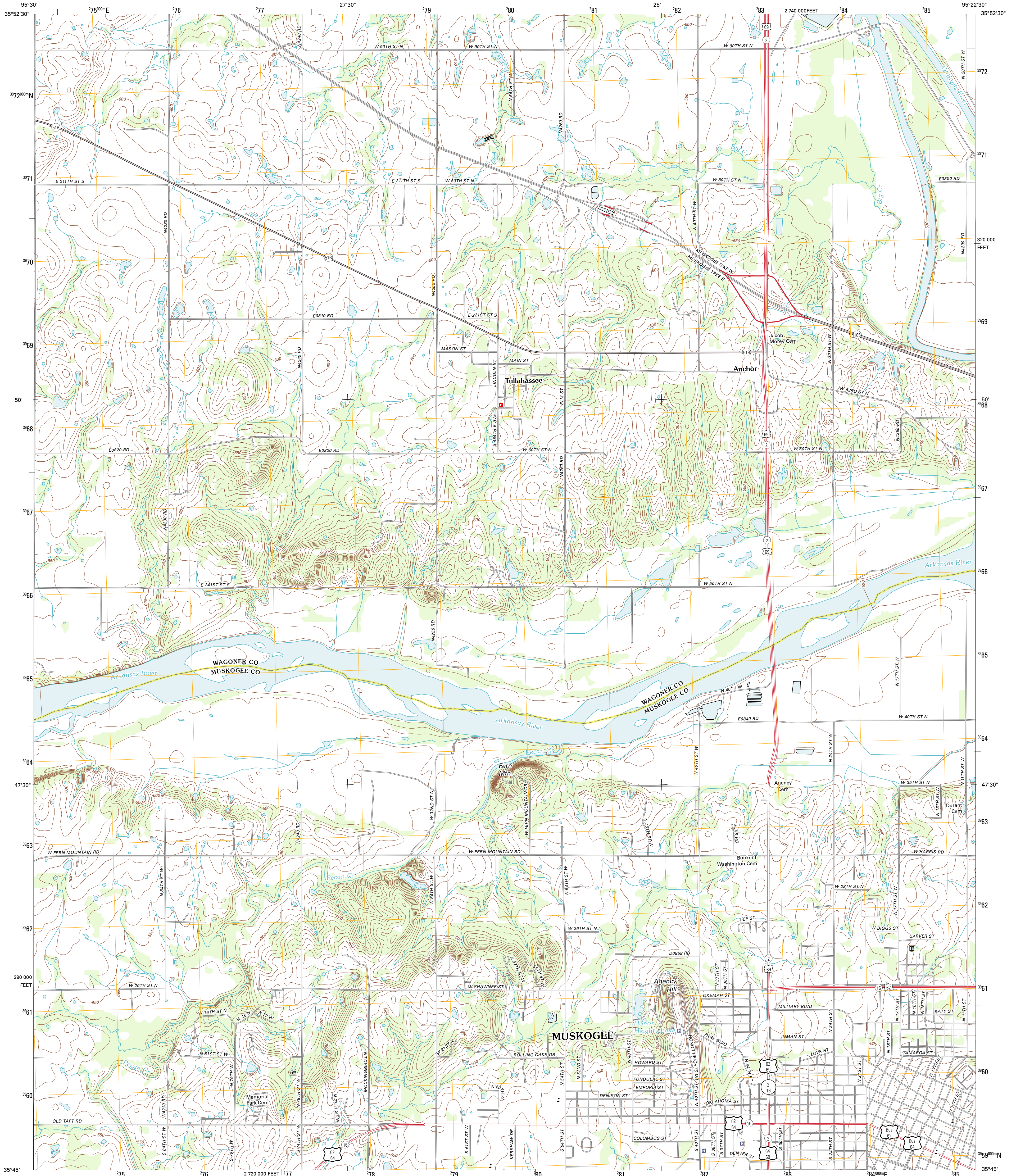




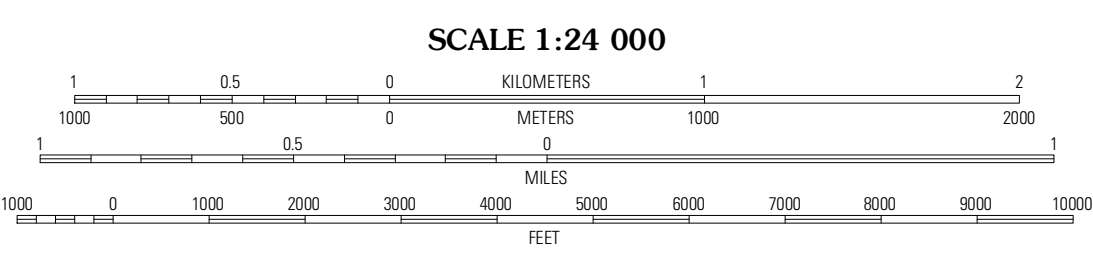
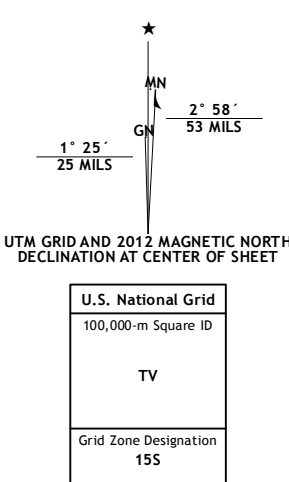
U.S. DEPARTMENT OF THE INTERIOR
U. S. GEOLOGICAL SURVEY



NORTHWEST MUSKOGEE QUADRANGLE
OKLAHOMA
7.5-MINUTE SERIES

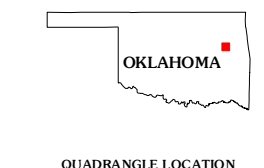


Produced by the United States Geological Survey
North American Datum of 1983 (NAD83)
World Geodetic System of 1984 (WGS84). Projection and
1 000-meter grid: Universal Transverse Mercator, Zone 15S
10 000-foot ticks: Oklahoma Coordinate System of 1983
(north zone)



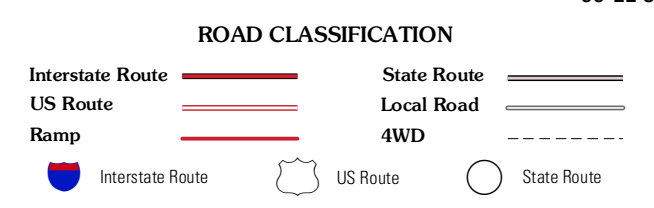
CONTOUR INTERVAL 10 FEET
NORTH AMERICAN VERTICAL DATUM OF 1988

This map was produced to conform with the
National Geospatial Program US Topo Product Standard, 2011.
A metadata file associated with this product is draft version 0.6.6



QUADRANGLE LOCATION

Bed	Wagoner	Wagoner
Bed	West	East
Taft	Northwest	Northeast
Taft	Muskogee	Muskogee
Beland	Southwest	Southeast
Beland	Muskogee	Muskogee



NORTHWEST MUSKOGEE, OK
2012

ADJOINING 7.5 QUADRANGLES