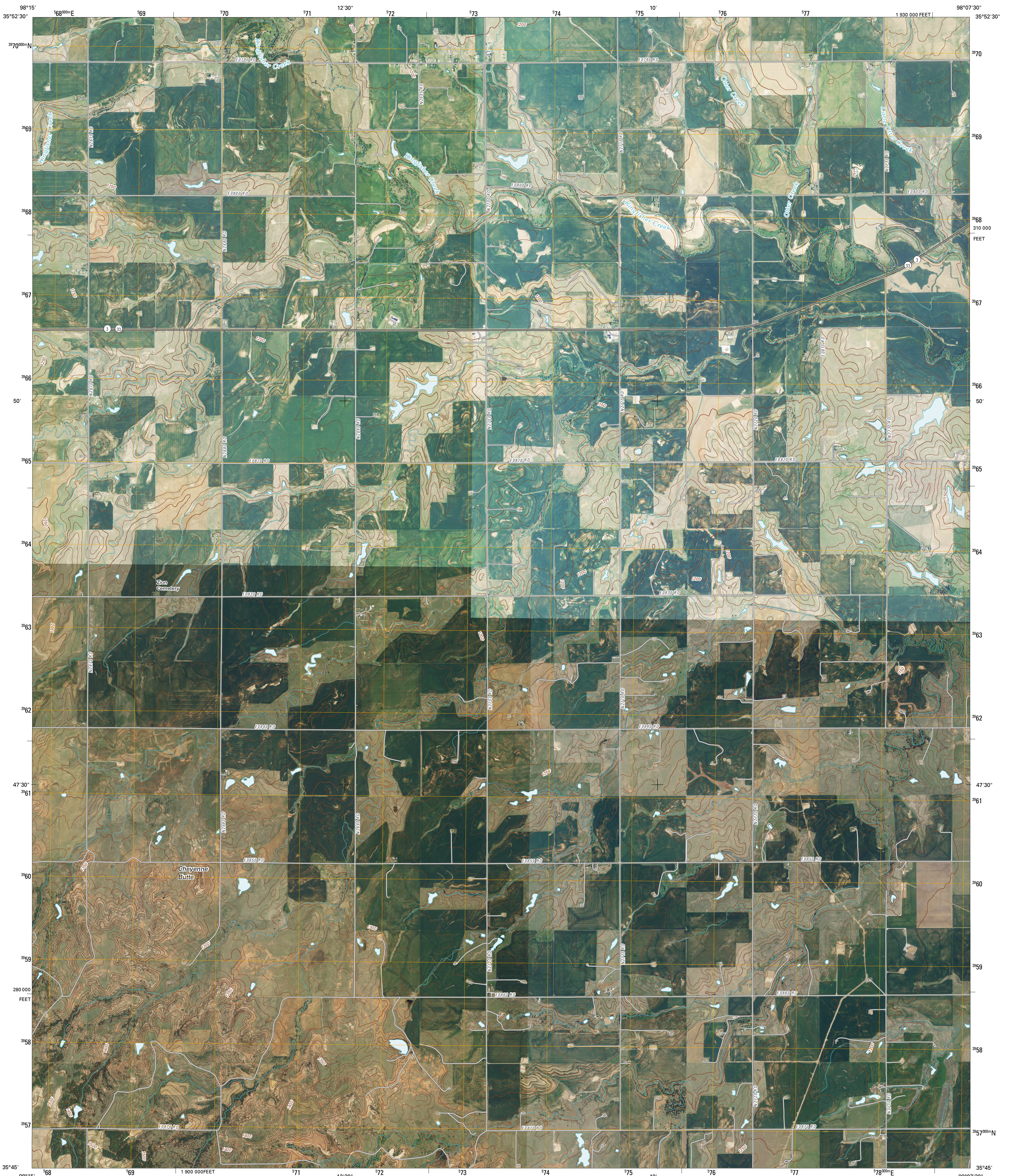




U.S. DEPARTMENT OF THE INTERIOR  
U. S. GEOLOGICAL SURVEY

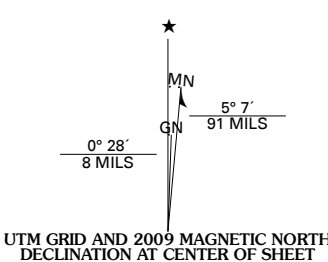


OMEGA QUADRANGLE  
OKLAHOMA  
7.5-MINUTE SERIES

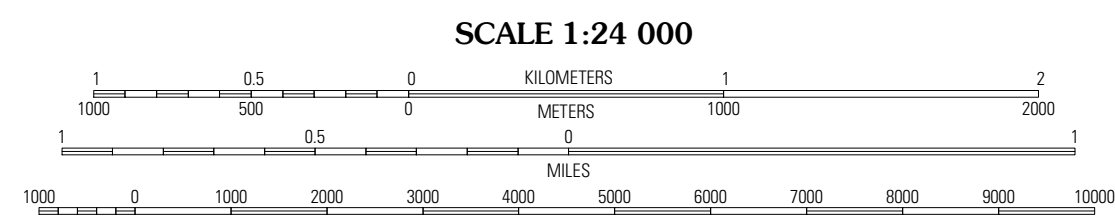


Produced by the United States Geological Survey  
North American Datum of 1983 (NAD83)  
World Geodetic System of 1984 (WGS84). Projection and  
1 000-meter grid: Universal Transverse Mercator, Zone 14S  
10 000-foot ticks: Oklahoma Coordinate System of 1983  
(north zone)

Imagery.....NAP, May 2008  
Roads.....National Transportation Dataset, 2006 - 2008  
Names.....GNIS, 2008  
Hydrography.....National Hydrography Dataset, 2008  
Contours.....National Elevation Dataset, 2000



U.S. National Grid
100,000-m Square ID
NE
Grid Zone Designation
14S



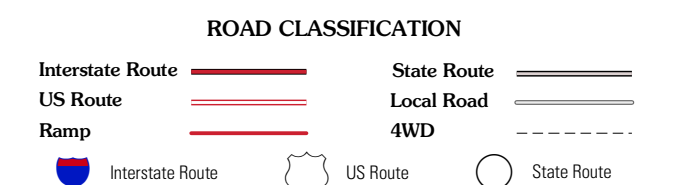
CONTOUR INTERVAL 10 FEET  
This map was produced to conform with version 0.5.10 of the  
draft USGS Standards for 7.5-Minute Quadrangle Maps.  
A metadata file associated with this product is also draft version 0.5.10



QUADRANGLE LOCATION

Hitchcock	Logan NW	Logan
Watonga SE	<b>Omega</b>	Logan SE
Geary North	Porcupine Butte	Fort Reno NE

ADJOINING 7.5' QUADRANGLES



OMEGA, OK  
2009