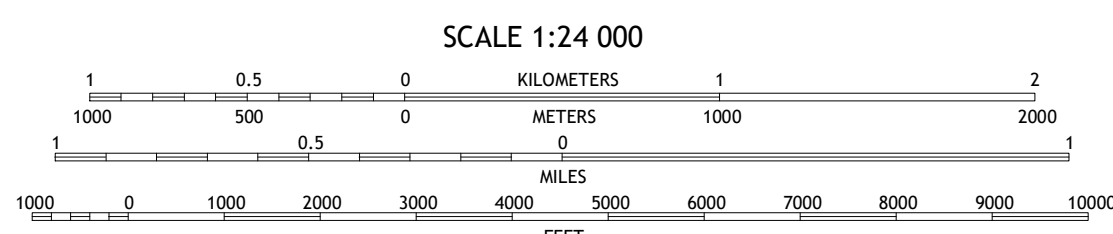
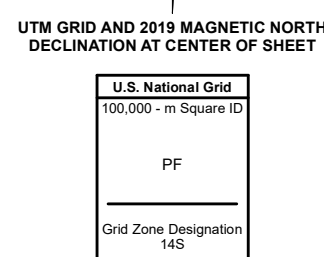
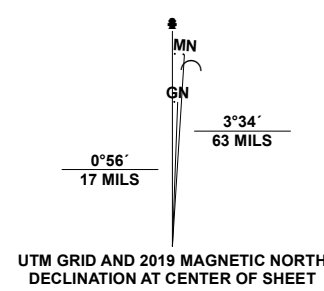


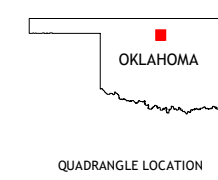
Produced by the United States Geological Survey

North American Datum of 1983 (NAD83)
World Geodetic System of 1984 (WGS84), Projection and
1 000-meter grid/Universal Transverse Mercator, Zone 14S
This map is not a legal document. Boundaries may be
generalized for this map scale. Private lands within government
reservations may not be shown. Obtain permission before
entering private lands.

Imagery.....NAIP, May 2017 - July 2017
Roads.....U.S. Census Bureau, 2015 - 2018
Names.....GNIS, 1997 - 2009
Hydrography.....National Hydrography Dataset, 2004 - 2018
Contours.....National Elevation Dataset, 2013
Boundaries.....Multiple sources; see metadata file 2019 - 2021
Public Land Survey System.....BLM, 2021
Wetlands.....FWS National Wetlands Inventory 1981 - 1981



CONTOUR INTERVAL 10 FEET
NORTH AMERICAN DATUM OF 1983
This map was produced to conform with the
National Geospatial Program US Topo Product Standard.



1	2	3
4	5	6
7	8	

- 1 Lamont SE
- 2 Tonkawa SE
- 3 Garber
- 4 Ceres
- 5 Covington
- 6 Lucien
- 7 Perry
- 8

ROAD CLASSIFICATION	
	Expressway
	Secondary Hwy
	Ramp
	Interstate Route
	US Route
	State Route
	Local Connector
	Local Road
	4WD

