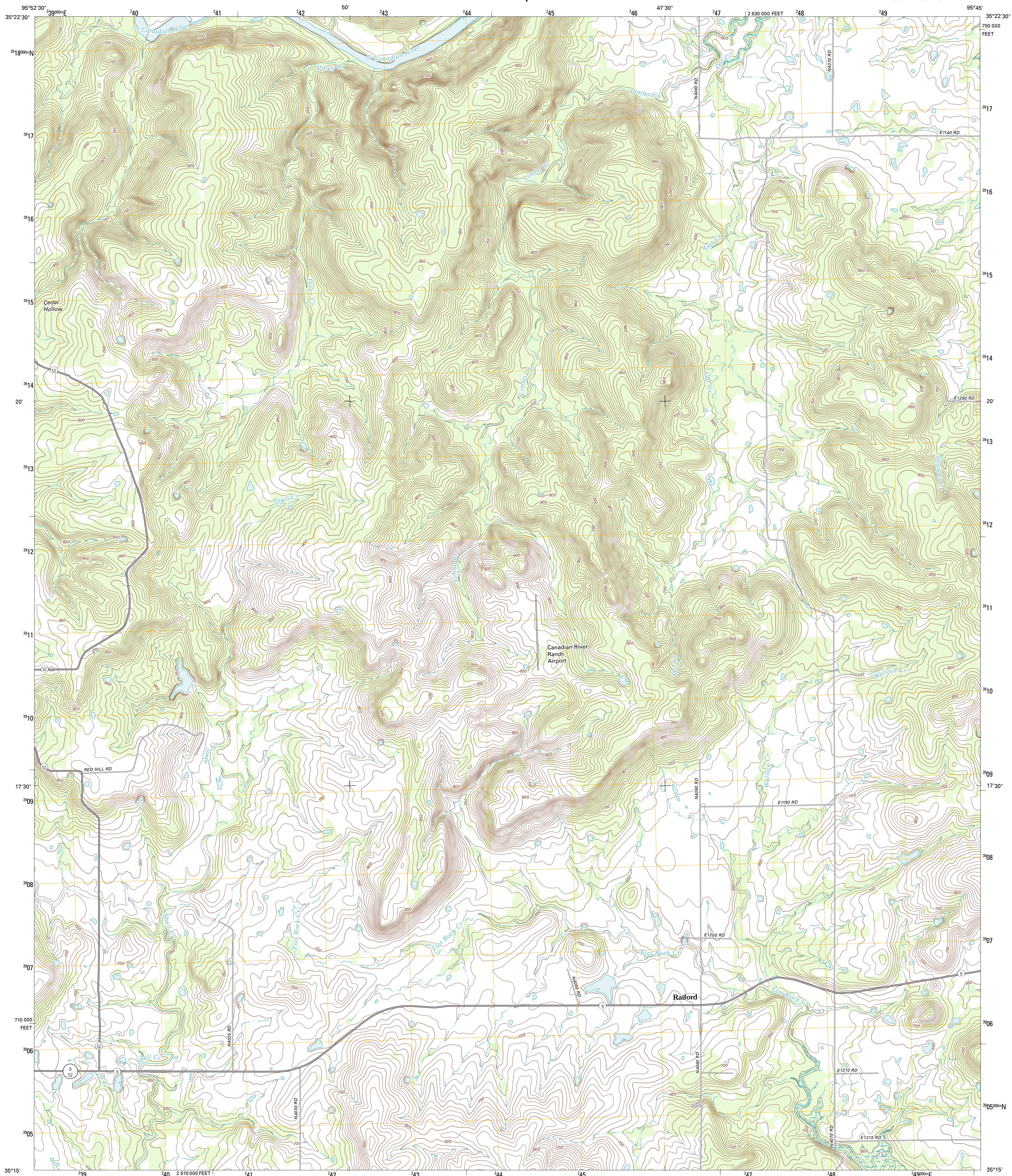




U.S. DEPARTMENT OF THE INTERIOR
U. S. GEOLOGICAL SURVEY



RAIFORD QUADRANGLE
OKLAHOMA-MCINTOSH CO.
7.5-MINUTE SERIES

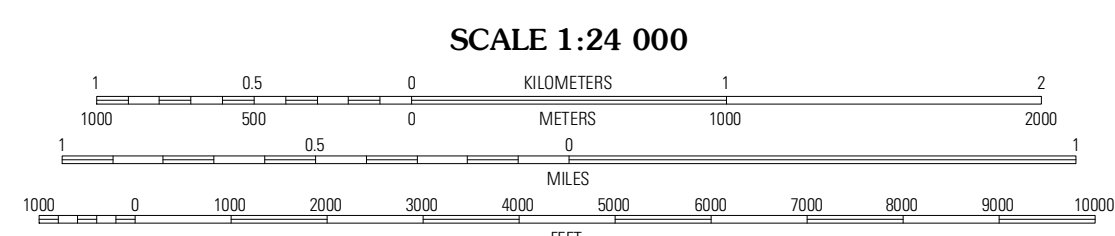


Produced by the United States Geological Survey
North American Datum of 1983 (NAD83)
World Geodetic System of 1984 (WGS84) Projection and
1 000-meter grid; Universal Transverse Mercator, Zone 15S
10 000-foot ticks; Oklahoma Coordinate System of 1983
(south zone)

UTM GRID AND 2012 MAGNETIC NORTH DECLINATION AT CENTER OF SHEET

U.S. National Grid
100,000-m Square ID
TV

Grid Zone Designation
15S



ROAD CLASSIFICATION

Interstate Route (thick red line)
US Route (red line)
Ramp (red line with blue triangle)State Route (thin red line)
Local Road (black line)
4WD (dashed black line)US Route (circle with number)State Route (circle with number)

QUADRANGLE LOCATION

Hennyetta	Hoffman	Pierce
Hennyetta SW	Raiford	Soliham
Hanna	Indianola	Canadian

CONTOUR INTERVAL 10 FEET
NORTH AMERICAN VERTICAL DATUM OF 1988

This map was produced to conform with the
National Geospatial Program US Topo Product Standard, 2011.
A metadata file associated with this product is draft version 0.6.6

RAIFORD, OK
2012

ADJOINING 7.5' QUADRANGLES