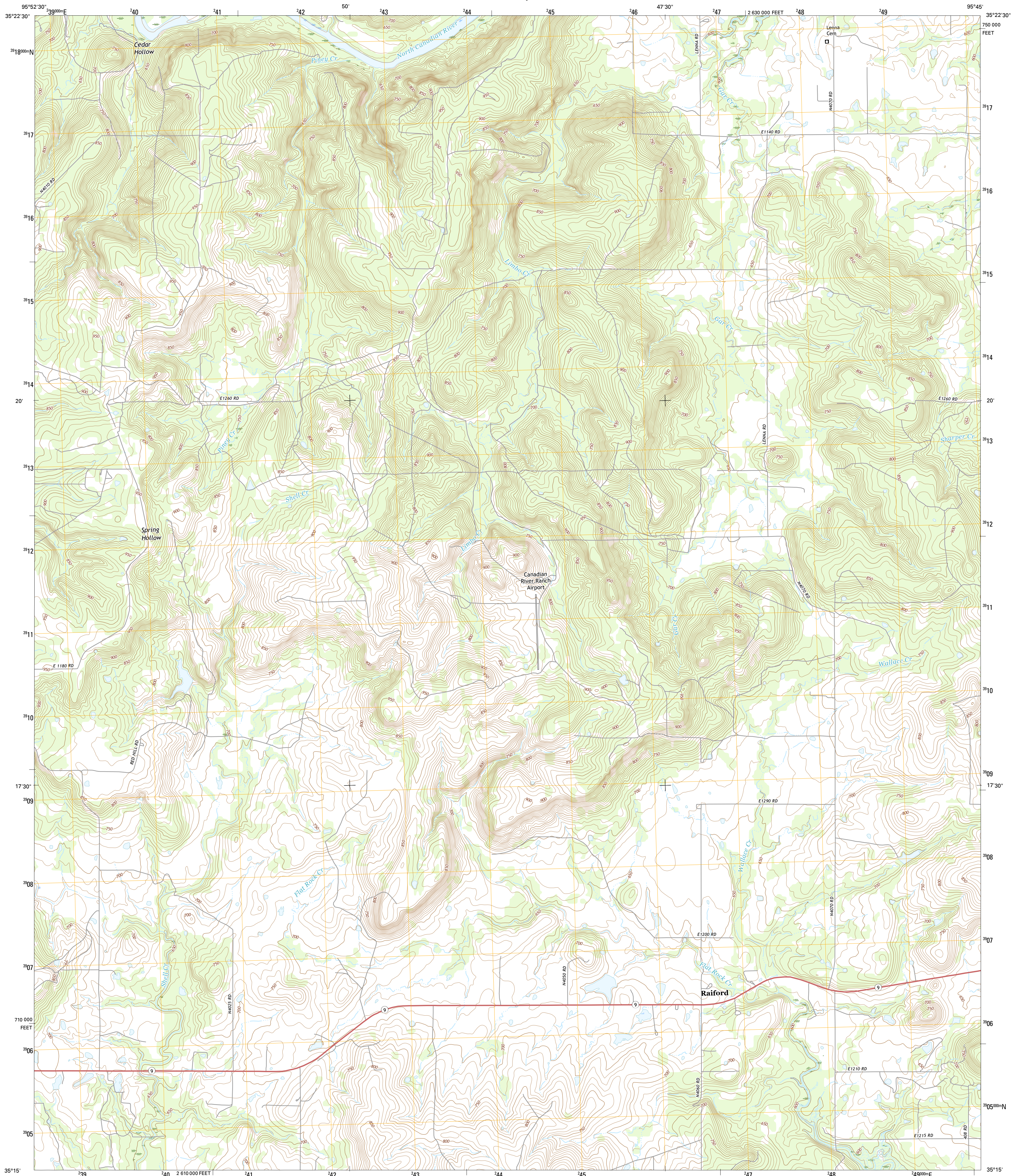




U.S. DEPARTMENT OF THE INTERIOR
U.S. GEOLOGICAL SURVEY



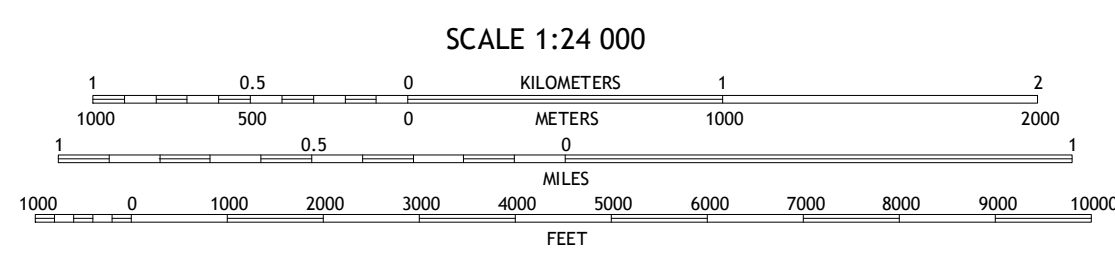
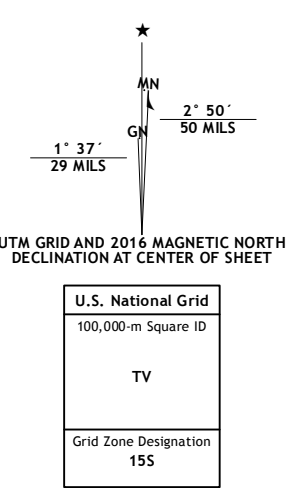
RAIFORD QUADRANGLE
OKLAHOMA-MCINTOSH CO.
7.5-MINUTE SERIES



Produced by the United States Geological Survey
 North American Datum of 1983 (NAD83)
 World Geodetic System of 1984 (WGS84) Projection and
 1 000-meter grid: Universal Transverse Mercator, Zone 15S
 10 000-foot ticks: Oklahoma Coordinate System of 1983 (south zone)

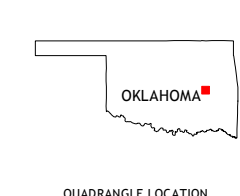
This map is not a legal document. Boundaries may be generalized for this map scale. Private lands within government reservations may not be shown. Obtain permission before entering private lands.

ImageT... NADIP, August 2013
 Roads... U.S. Census Bureau, 2014 - 2015
 Names... GNIS, 2015
 Hydrography... National Hydrography Dataset, 2013
 Contours... National Elevation Dataset, 2012
 Boundaries... Multiple sources; see metadata file 1972 - 2015
 Wetlands... FWS National Wetlands Inventory 1977 - 2014



CONTOUR INTERVAL 10 FEET
 NORTH AMERICAN VERTICAL DATUM OF 1988

This map was produced to conform with the National Geospatial Program US Topo Product Standard, 2011. A metadata file associated with this product is draft version 0.6.19



1	2	3
4	5	6
7	8	

ADJOINING QUADRANGLES

- 1 Henryetta
- 2 Hoffman
- 3 Pierce
- 4 Henryetta SW
- 5 Stidham
- 6 Hanna
- 7 Indianola
- 8 Canadian

ROAD CLASSIFICATION

	Expressway		Local Connector
	Secondary Hwy		Local Road
	Ramp		4WD
	Interstate Route		US Route
			State Route

RAIFORD, OK
2016

