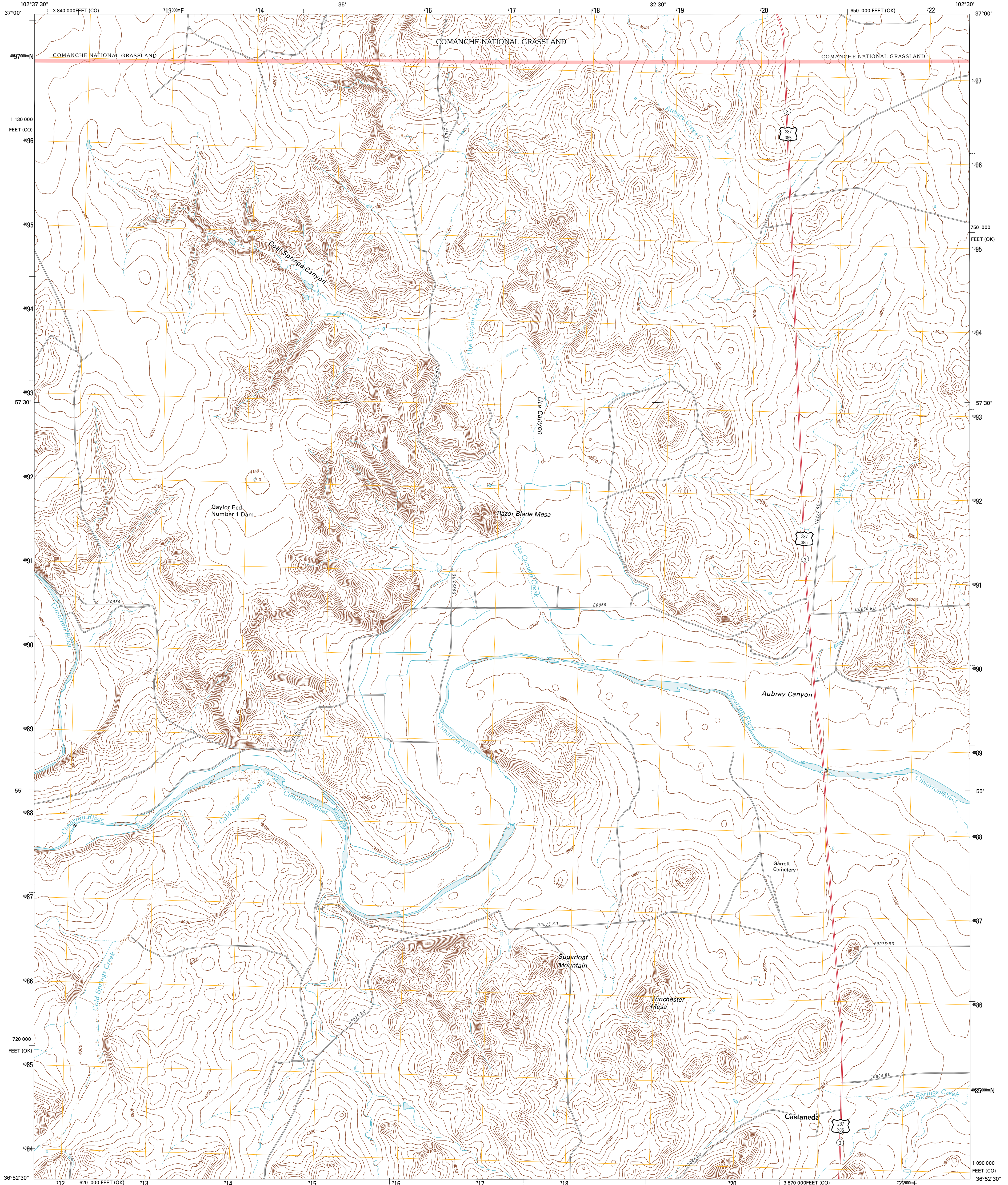




U.S. DEPARTMENT OF THE INTERIOR
U. S. GEOLOGICAL SURVEY

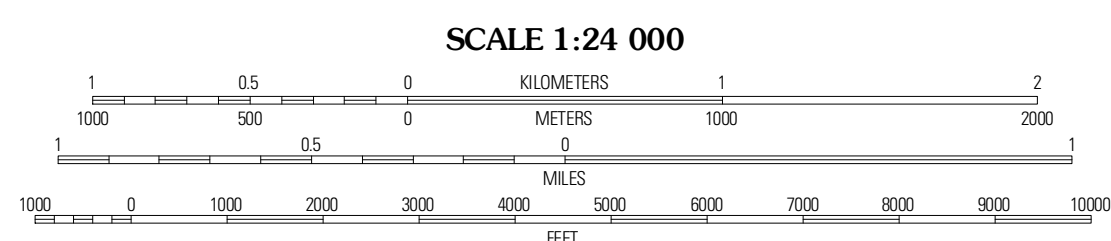
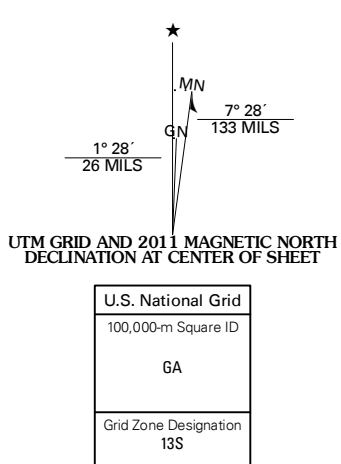


RAZOR BLADE MESA QUADRANGLE
OKLAHOMA-COLORADO
7.5-MINUTE SERIES

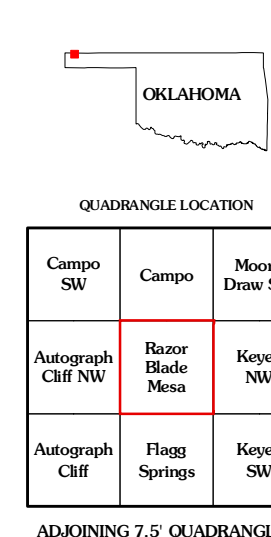


Produced by the United States Geological Survey
North American Datum of 1983 (NAD83)
World Geodetic System of 1984 (WGS84). Projection and
1:000-meter grid: Universal Transverse Mercator, Zone 13S
10 000-foot ticks: Oklahoma Coordinate System of 1983
(north zone), Colorado Coordinate System of 1983 (south
zone)

Imagery:.....NAP, May 2008
Roads:.....©2006-2010 Tele Atlas
Roads within US Forest Service Lands:.....FSTopo Data
with limited Forest Service updates, 2009
Names:.....GNIS, 2010
Hydrography:.....National Hydrography Dataset, 2008
Contours:.....National Elevation Dataset, 2006



SCALE 1:24 000
CONTOUR INTERVAL 10 FEET
NORTH AMERICAN VERTICAL DATUM OF 1988
This map was produced to conform with version 0.5.10 of the
draft USGS Standards for 7.5-Minute Quadrangle Maps.
A metadata file associated with this product is draft version 0.5.12



ROAD CLASSIFICATION
Interstate Route
US Route
Ramp
State Route
Local Road
4WD
FS Primary Route
US Route
FS Passenger Route
FS High Clearance Route

Check with local Forest Service unit
for current travel conditions and restrictions.
RAZOR BLADE MESA, OK-CO
2011

QUADRANGLE LOCATION

Campo SW	Campo	Moore Draw SW
Autograph Cliff NW	Razor Blade Mesa	Keyes NW
Autograph Cliff	Flag Springs	Keyes SW

ADJOINING 7.5 QUADRANGLES