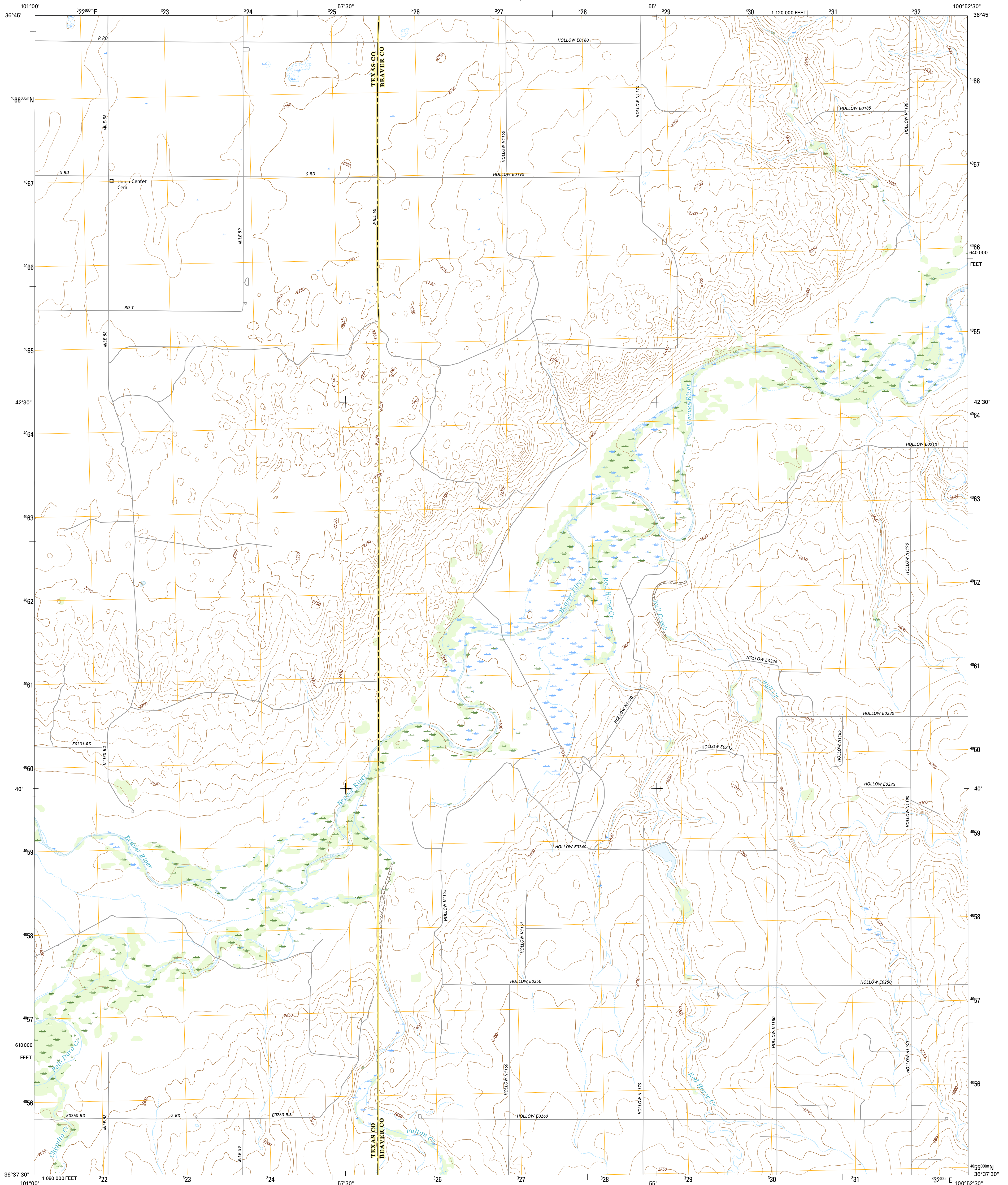




U.S. DEPARTMENT OF THE INTERIOR
U.S. GEOLOGICAL SURVEY



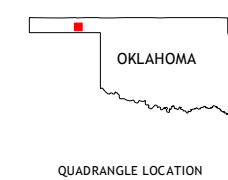
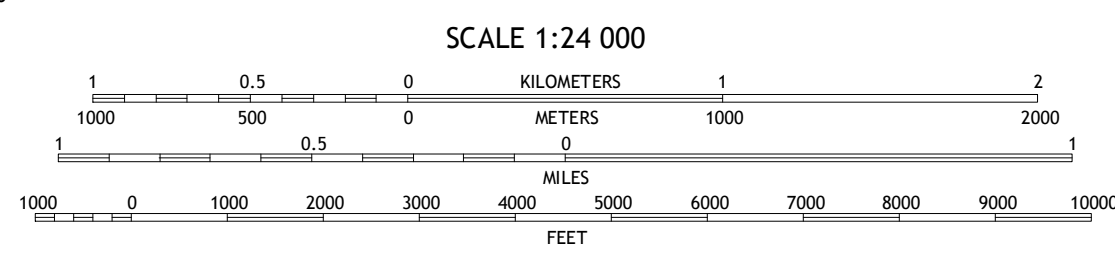
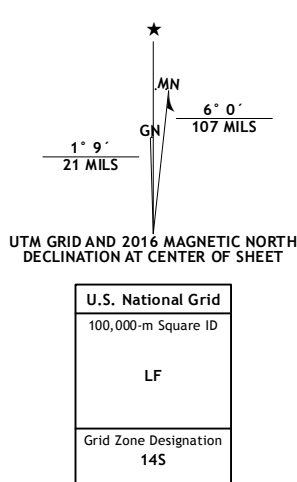
RED HORSE CREEK QUADRANGLE
OKLAHOMA
7.5-MINUTE SERIES



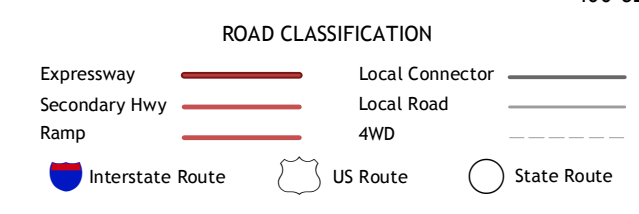
Produced by the United States Geological Survey
North American Datum of 1983 (NAD83)
World Geodetic System of 1984 (WGS84), Projection and
1 000-meter grid: Universal Transverse Mercator, Zone 14S
10 000-foot ticks: Oklahoma Coordinate System of 1983 (north
zone)

This map is not a legal document. Boundaries may be
generalized for this map scale. Private lands within government
reservations may not be shown. Obtain permission before
entering private lands.

Imagery:.....NAIP, June 2013
Roads:.....U.S. Census Bureau, 2014
Names:.....GNIS, 2015
Hydrography:.....National Hydrography Dataset, 2013
Contours:.....National Elevation Dataset, 2007
Boundaries:.....Multiple sources; see metadata file 1972-2015
Wetlands:.....FWS National Wetlands Inventory 1977-2014



QUADRANGLE LOCATION



1	2	3
4	5	6
7	8	

ADJOINING QUADRANGLES

- 1 Adams
- 2 Turpin West
- 3 Turpin East
- 4 Hardesty NE
- 5 Boyd
- 6 Hardesty SE
- 7 Bryans Corner SW
- 8 Bryans Corner

RED HORSE CREEK, OK
2016

