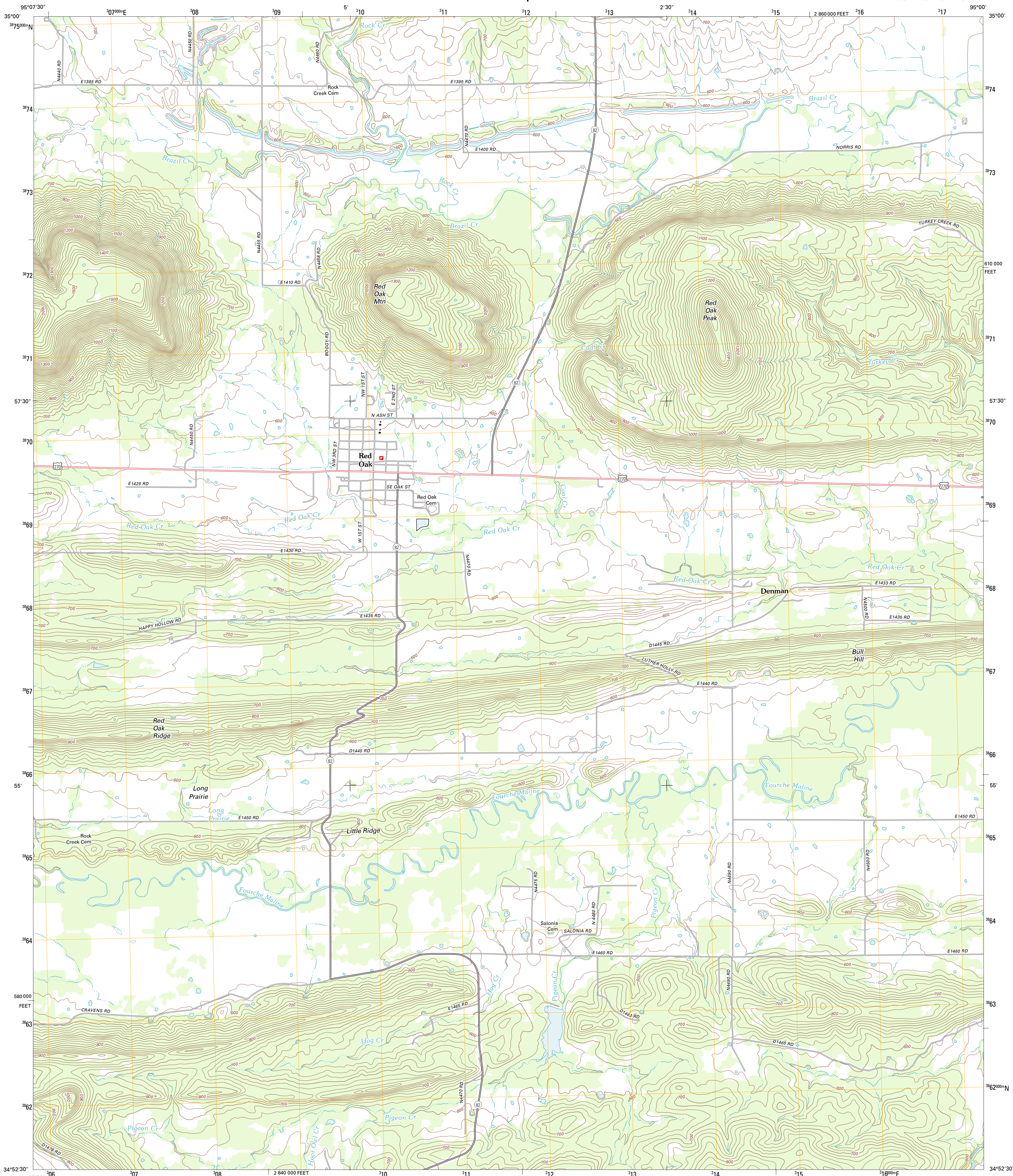




U.S. DEPARTMENT OF THE INTERIOR
U. S. GEOLOGICAL SURVEY



RED OAK QUADRANGLE
OKLAHOMA-LATIMER CO.
7.5-MINUTE SERIES



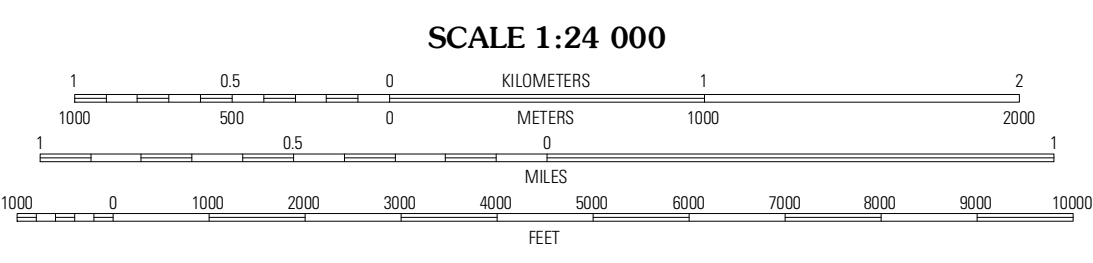
Produced by the United States Geological Survey
North American Datum of 1983 (NAD83)
World Geodetic System of 1984 (WGS84) Projection and
1 000-meter grid; Universal Transverse Mercator, Zone 15S
10 000-foot ticks; Oklahoma Coordinate System of 1983
(south zone)

Imagery: NADP, August 2010
Roads: ©2006-2011 TomTom
Names: GNIS, 2012
Hydrography: National Hydrography Dataset, 2010
Contours: National Elevation Dataset, 2007
Boundaries: Census, IBWC, IBC, USGS, 1972 - 2012

UTM GRID AND 2011 MAGNETIC NORTH DECLINATION AT CENTER OF SHEET

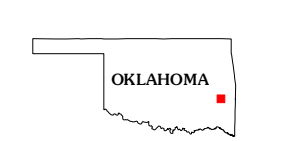
U.S. National Grid
100,000-m Square ID
UU

Grid Zone Designation
15S



CONTOUR INTERVAL 20 FEET
NORTH AMERICAN VERTICAL DATUM OF 1988

This map was produced to conform with the
National Geospatial Program US Topo Product Standard, 2011.
A metadata file associated with this product is draft version 0.6.6



QUADRANGLE LOCATION

Rinta	Lequire	McCurtain SW
Panola	Red Oak	Leflore
Baker Mountain	Talbina	Blackjack Ridge

ADJOINING 7.5 QUADRANGLES

ROAD CLASSIFICATION

Interstate Route (thick red line)
US Route (red line)
Ramp (red line with blue triangle)

State Route (thin red line)
Local Road (black line)
4WD (dashed black line)

RED OAK, OK
2012