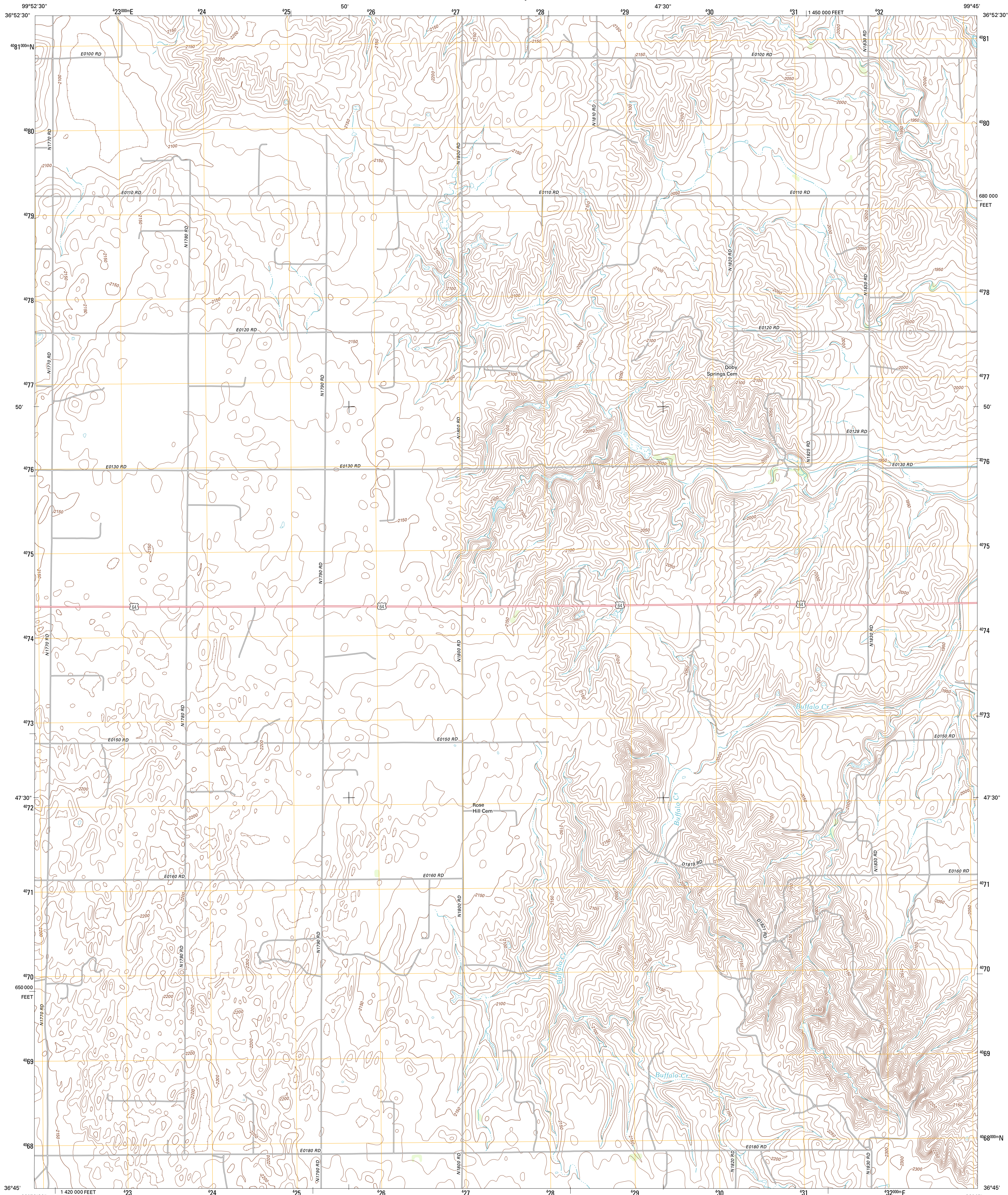




U.S. DEPARTMENT OF THE INTERIOR
U. S. GEOLOGICAL SURVEY

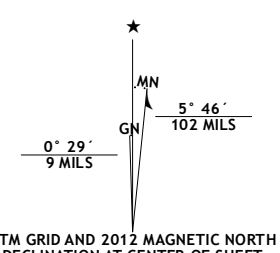


ROSSTON SE QUADRANGLE
OKLAHOMA-HARPER CO.
7.5-MINUTE SERIES

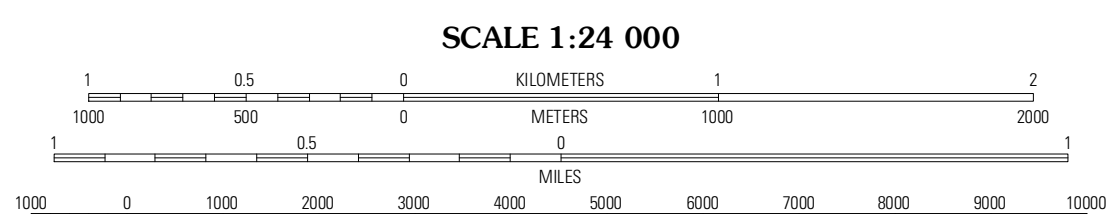


Produced by the United States Geological Survey
North American Datum of 1983 (NAD83)
World Geodetic System of 1984 (WGS84). Projection and
1 000-foot ticks: Oklahoma Coordinate System of 1983
(north zone)

Imagery.....N/AIP, April 2010
Roads.....©2006-2011 TomTom
Names.....GNIS, 2012
Hydrography.....National Hydrography Dataset, 2010
Contours.....National Elevation Dataset, 2007
Boundaries.....Census, BWC, IBC, USGS, 1972 - 2012



U.S. National Grid
100,000-m Square ID
MF
Grid Zone Designation
14S



CONTOUR INTERVAL 10 FEET
NORTH AMERICAN VERTICAL DATUM OF 1988

This map was produced to conform with the
National Geospatial Program US Topo Product Standard, 2011.
A metadata file associated with this product is draft version 0.6.6



QUADRANGLE LOCATION

Rosston NW	Rosston NE	Buffalo NW
Rosston	Rosston SE	Buffalo
Laverne	Laverne NE	Fort Supply NW

ROAD CLASSIFICATION

Interstate Route (thick red line)
US Route (red line)
Ramp (red line with blue triangle)
State Route (thin red line)
Local Road (black line)
4WD (dashed black line)
State Route (thin black line)

ROSSTON SE, OK
2012

ADJOINING 7.5' QUADRANGLES