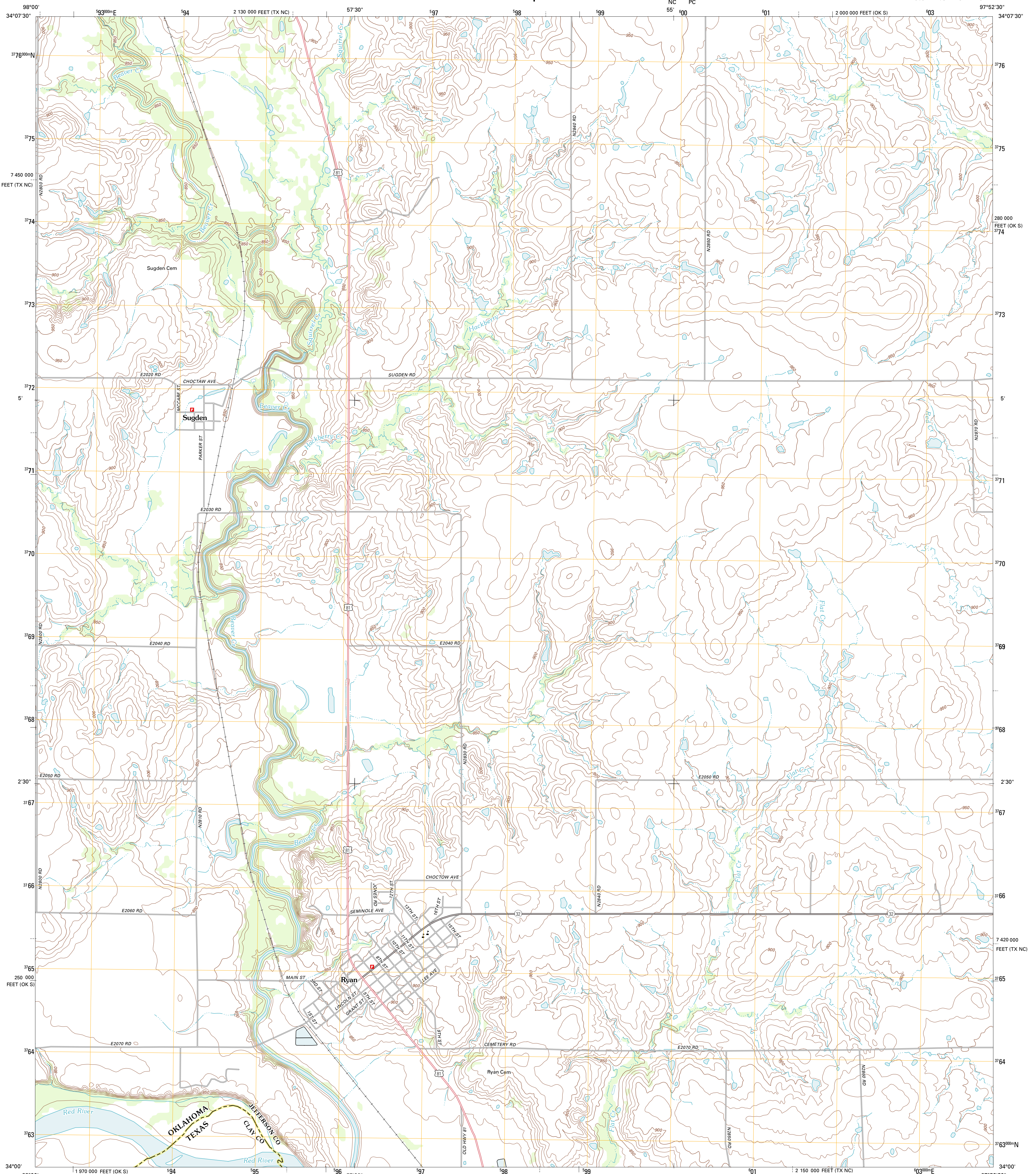




U.S. DEPARTMENT OF THE INTERIOR
U. S. GEOLOGICAL SURVEY

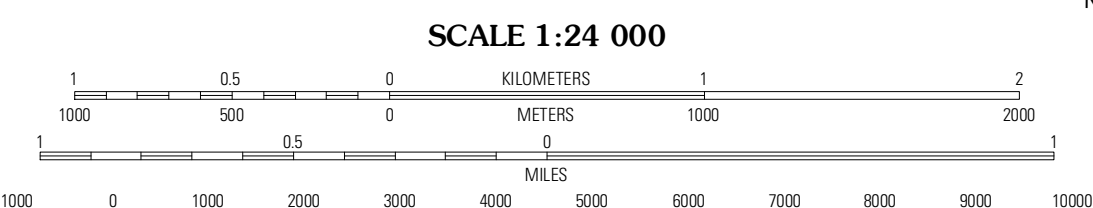
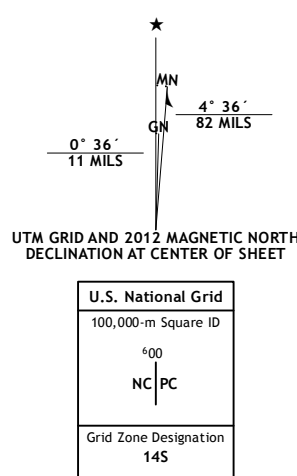


RYAN QUADRANGLE
OKLAHOMA-Texas
7.5-MINUTE SERIES



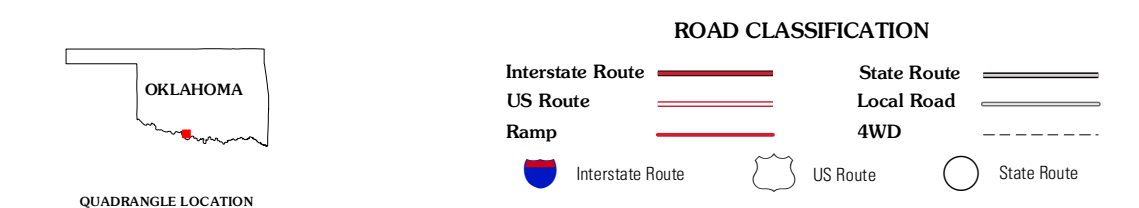
Produced by the United States Geological Survey
North American Datum of 1983 (NAD83)
World Geodetic System of 1984 (WGS84). Projection and
1 000-foot ticks: Oklahoma Coordinate System of 1983
(south zone), Texas Coordinate System of 1983 (north central
zone)

Imagery:.....NAP, May 2010
Roads:.....©2006-2011 TomTom
Names:.....GNIS, 2012
Hydrography:.....National Hydrography Dataset, 2010
Contours:.....National Elevation Dataset, 2005
Boundaries:.....Census, IBWC, BC, USGS, 1972 - 2012



SCALE 1:24 000
CONTOUR INTERVAL 10 FEET
NORTH AMERICAN VERTICAL DATUM OF 1988

This map was produced to conform with the
National Geospatial Program US Topo Product Standard, 2011.
A metadata file associated with this product is draft version 0.6.6



QUADRANGLE LOCATION

Wasika West	Wasika East	Ryan NE
Irving	Ryan	Ryan SE
Riverland Cemetery	Terral	Fleetwood

RYAN, OK-TX
2012

ADJOINING 7.5' QUADRANGLES