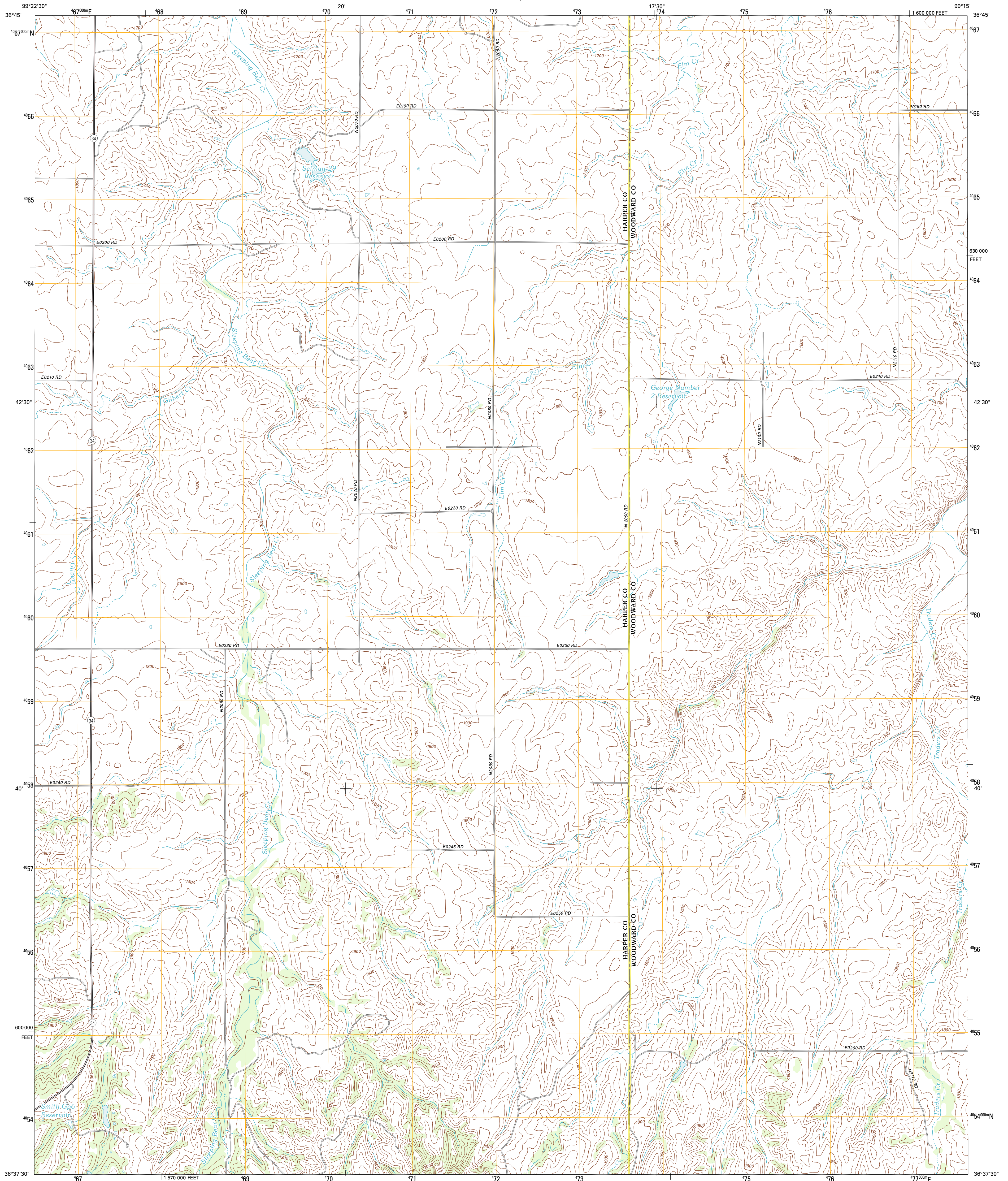




U.S. DEPARTMENT OF THE INTERIOR
U. S. GEOLOGICAL SURVEY

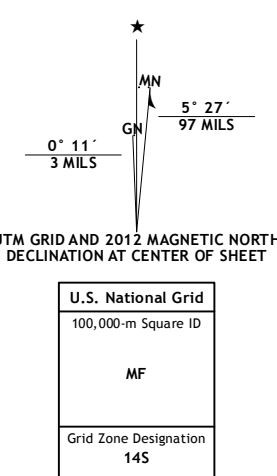


SLEEPING BEAR CREEK QUADRANGLE
OKLAHOMA
7.5-MINUTE SERIES



Produced by the United States Geological Survey
North American Datum of 1983 (NAD83)
World Geodetic System of 1984 (WGS84). Projection and
1 000-meter grid: Universal Transverse Mercator, Zone 14S
10 000-foot ticks: Oklahoma Coordinate System of 1983
(north zone)

Imagery:.....NAIP, April 2010
Roads:.....©2006-2011 TomTom
Names:.....GNIS, 2012
Hydrography:.....National Hydrography Dataset, 2010
Contours:.....National Elevation Dataset, 2007
Boundaries:.....Census, IBWC, IBC, USGS, 1972-2012



CONTOUR INTERVAL 20 FEET
NORTH AMERICAN VERTICAL DATUM OF 1988
This map was produced to conform with the
National Geospatial Program US Topo Product Standard, 2011.
A metadata file associated with this product is draft version 0.6.6



QUADRANGLE LOCATION

Selman	Selman SE	Edith
Sleeping Bear Creek NW	Sleeping Bear Creek	Alhaster Caverns
Sleeping Bear Creek SW	Sleeping Bear Creek SE	Fairvalley SW

ADJOINING 7.5 QUADRANGLES

ROAD CLASSIFICATION

Interstate Route	State Route
US Route	Local Road
Ramp	4WD

SLEEPING BEAR CREEK, OK
2012