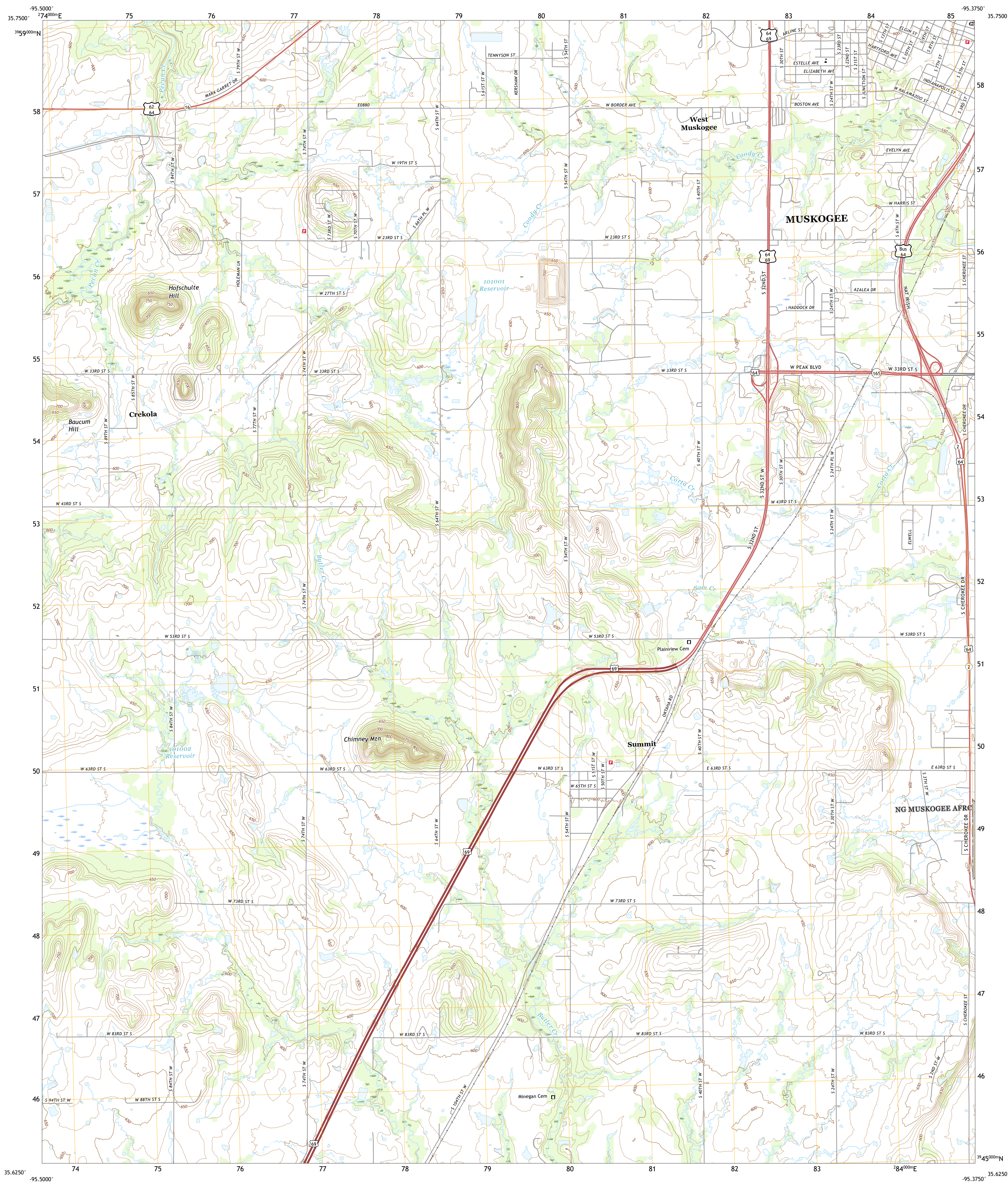




U.S. DEPARTMENT OF THE INTERIOR
U.S. GEOLOGICAL SURVEY



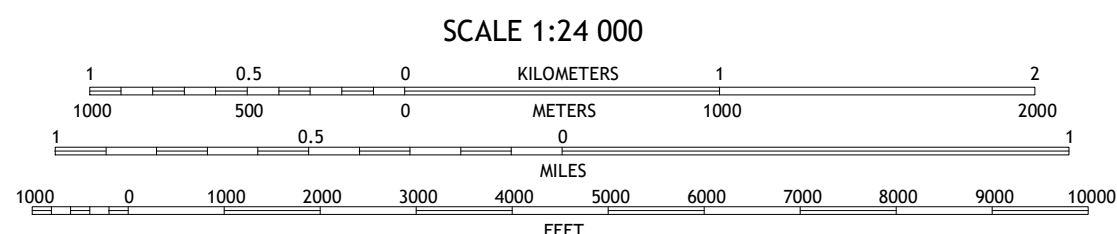
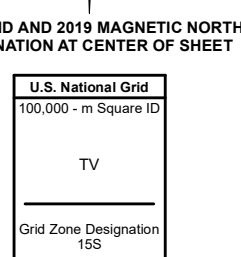
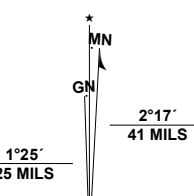
SOUTHWEST MUSKOGEE QUADRANGLE
OKLAHOMA - MUSKOGEE COUNTY
7.5-MINUTE SERIES



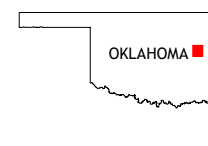
Produced by the United States Geological Survey

North American Datum of 1983 (NAD83)
World Geodetic System of 1984 (WGS84), Projection and
1 000-meter grid/Universal Transverse Mercator, Zone 15S
This map is not a legal document. Boundaries may be
generalized for this map scale. Private lands within government
reservations may not be shown. Obtain permission before
entering private lands.

ImageryN.A.I.P., September 2017 - November 2017
RoadsU.S. Census Bureau, 2015 - 2018
NamesG.N.S., 1979 - 2021
HydrographyNational Hydrography Dataset, 2004 - 2018
ContoursNational Elevation Dataset, 2018
BoundariesMultiple sources; see metadata file 2019 - 2021
Public Land Survey SystemBLM, 2021
WetlandsFWS National Wetlands Inventory 1980 - 1981



CONTOUR INTERVAL 10 FEET
NORTH AMERICAN VERTICAL DATUM OF 1988
This map was produced to conform with the
National Geospatial Program US Topo Product Standard.



QUADRANGLE LOCATION

1	2	3
4	5	6
7	8	9

ADJOINING QUADRANGLES

- 1 Taft
- 2 Northwest Muskogee
- 3 Northeast Muskogee
- 4 Beland
- 5 Southeast Muskogee
- 6 Wainwright
- 7 Oktaha
- 8 Keerton

ROAD CLASSIFICATION

	Expressway
	Secondary Hwy
	Ramp
	Interstate Route
	Local Connector
	Local Road
	4WD
	US Route
	State Route

SOUTHWEST MUSKOGEE, OK

2022

