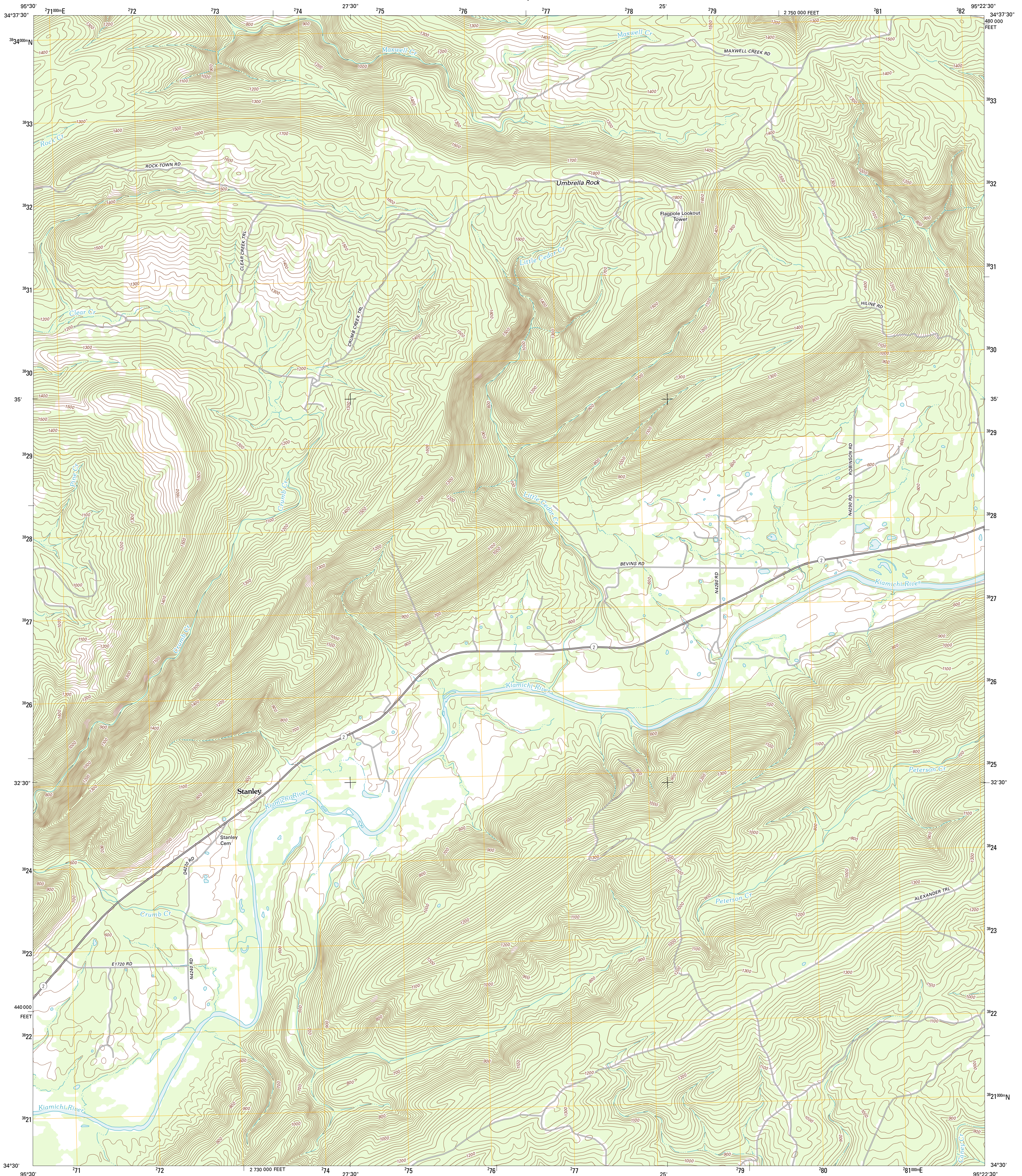




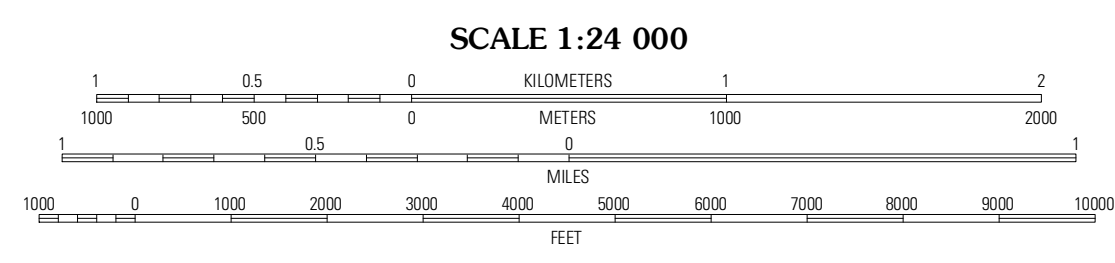
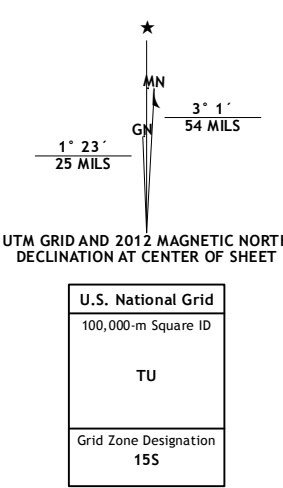
U.S. DEPARTMENT OF THE INTERIOR
U. S. GEOLOGICAL SURVEY



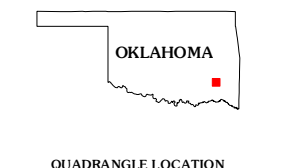
STANLEY QUADRANGLE
OKLAHOMA-PUSHMATAHA CO.
7.5-MINUTE SERIES



Produced by the United States Geological Survey
North American Datum of 1983 (NAD83)
World Geodetic System of 1984 (WGS84) Projection and
1 000-meter grid: Universal Transverse Mercator, Zone 15S
10 000-foot ticks: Oklahoma Coordinate System of 1983
(south zone)



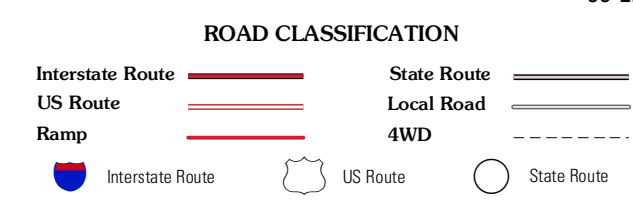
CONTOUR INTERVAL 20 FEET
NORTH AMERICAN VERTICAL DATUM OF 1988
This map was produced to conform with the
National Geospatial Program US Topo Product Standard, 2011.
A metadata file associated with this product is draft version 0.6.6



QUADRANGLE LOCATION

| | | |
|--------|----------------|--------------------|
| Counts | Sardis | Vanah |
| Adel | Stanley | Clayton |
| Dunbar | Snow | Wildhorse Mountain |

ADJOINING 7.5' QUADRANGLES



STANLEY, OK
2012