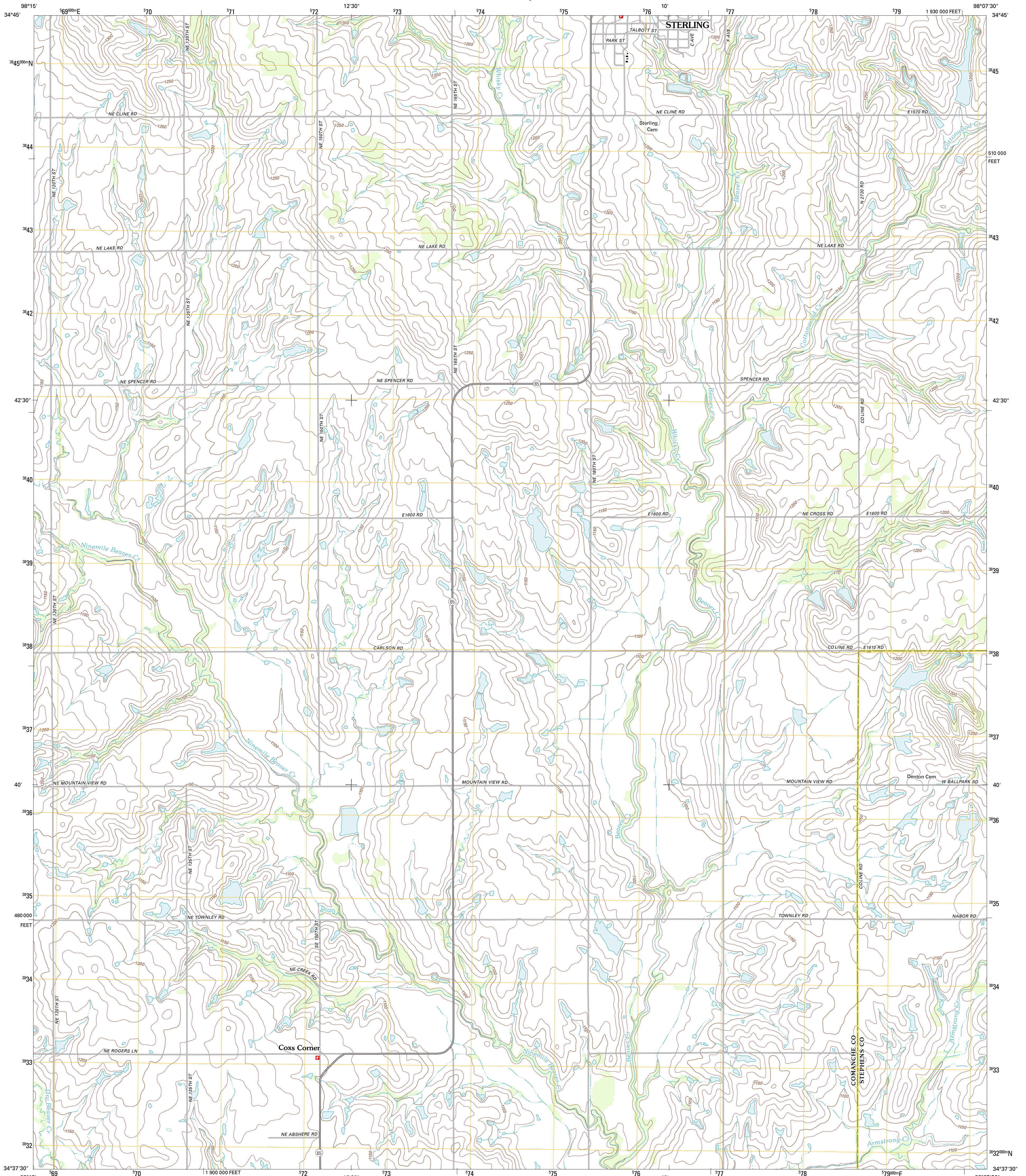




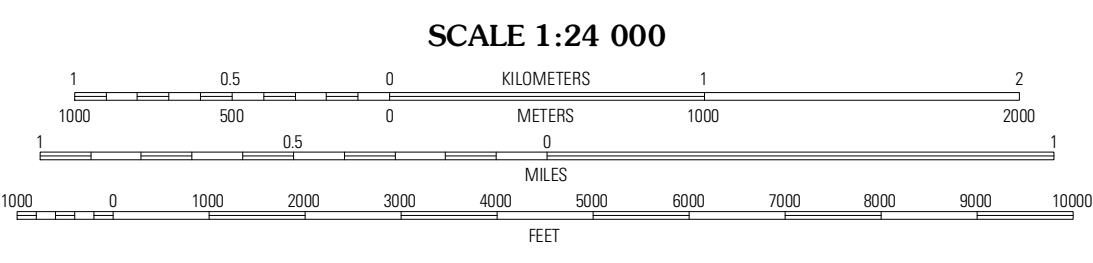
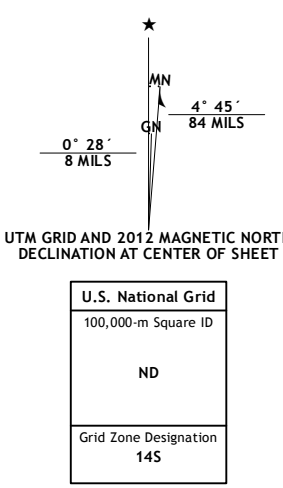
U.S. DEPARTMENT OF THE INTERIOR
U. S. GEOLOGICAL SURVEY



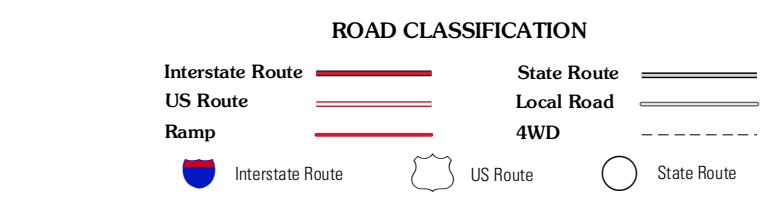
STERLING QUADRANGLE
OKLAHOMA
7.5-MINUTE SERIES



Produced by the United States Geological Survey
North American Datum of 1983 (NAD83)
World Geodetic System of 1984 (WGS84). Projection and
1 000-meter grid: Universal Transverse Mercator, Zone 14S
10 000-foot ticks: Oklahoma Coordinate System of 1983
(south zone)



SCALE 1:24 000
CONTOUR INTERVAL 10 FEET
NORTH AMERICAN VERTICAL DATUM OF 1988



QUADRANGLE LOCATION

Elgin	Fletcher	Rocky Ford
Abuckale Hill	Sterling	Denton
Ninemile Creek	Letita	Nelle

Imagery.....NAIP, May 2010
Roads.....©2006-2011 TomTom
Names.....GNIS, 2012
Hydrography.....National Hydrography Dataset, 2010
Contours.....National Elevation Dataset, 2007
Boundaries.....Census, IBWC, IBC, USGS, 1972 - 2012

This map was produced to conform with the
National Geospatial Program US Topo Product Standard, 2011.
A metadata file associated with this product is draft version 0.6.6

STERLING, OK
2012

ADJOINING 7.5 QUADRANGLES