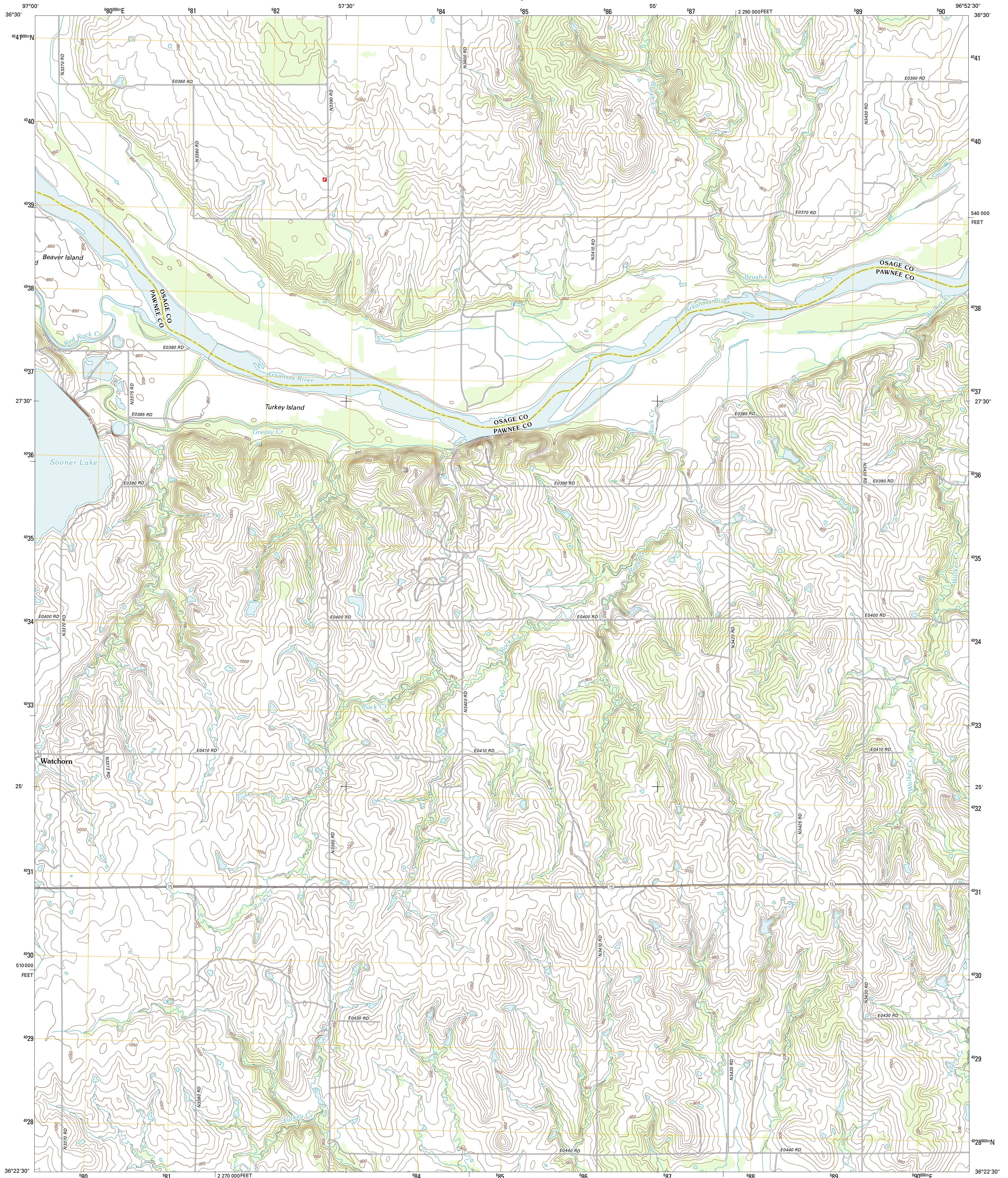




U.S. DEPARTMENT OF THE INTERIOR  
U. S. GEOLOGICAL SURVEY

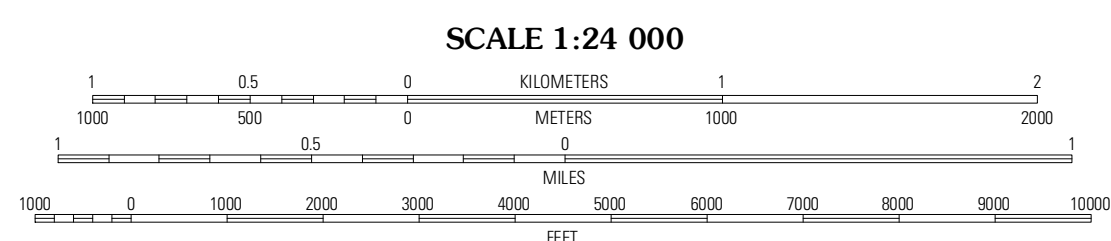
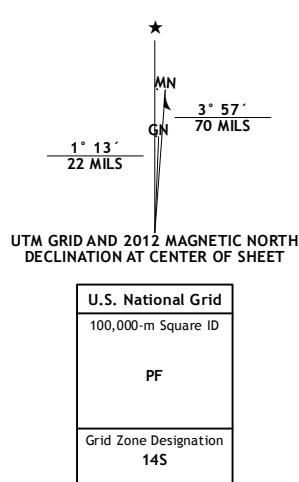


WATCHORN QUADRANGLE  
OKLAHOMA  
7.5-MINUTE SERIES



Produced by the United States Geological Survey  
North American Datum of 1983 (NAD83)  
World Geodetic System of 1984 (WGS84). Projection and  
1 000-meter grid: Universal Transverse Mercator, Zone 14S  
10 000-foot ticks: Oklahoma Coordinate System of 1983  
(north zone)

Imagery:.....NAIP, May 2010 - August 2010  
Roads:.....©2006-2011 TomTom  
Names:.....GNIS, 2012  
Hydrography:.....National Hydrography Dataset, 2010  
Contours:.....National Elevation Dataset, 2008  
Boundaries:.....Census, IBWC, IBC, USGS, 1972 - 2012

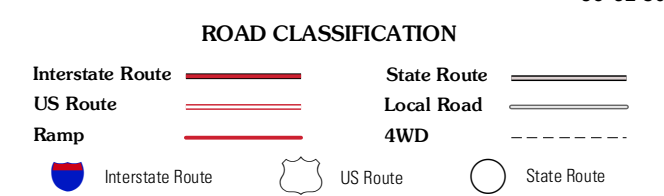


CONTOUR INTERVAL 10 FEET  
NORTH AMERICAN VERTICAL DATUM OF 1988  
This map was produced to conform with the  
National Geospatial Program US Topo Product Standard, 2011.  
A metadata file associated with this product is draft version 0.6.6



QUADRANGLE LOCATION

Ponca City SE	Pretyhair Creek	Doga Creek
Morrison NE	<b>Watchorn</b>	Masham
Morrison	Lela	Pawnee



WATCHORN, OK  
2012

ADJOINING 7.5 QUADRANGLES