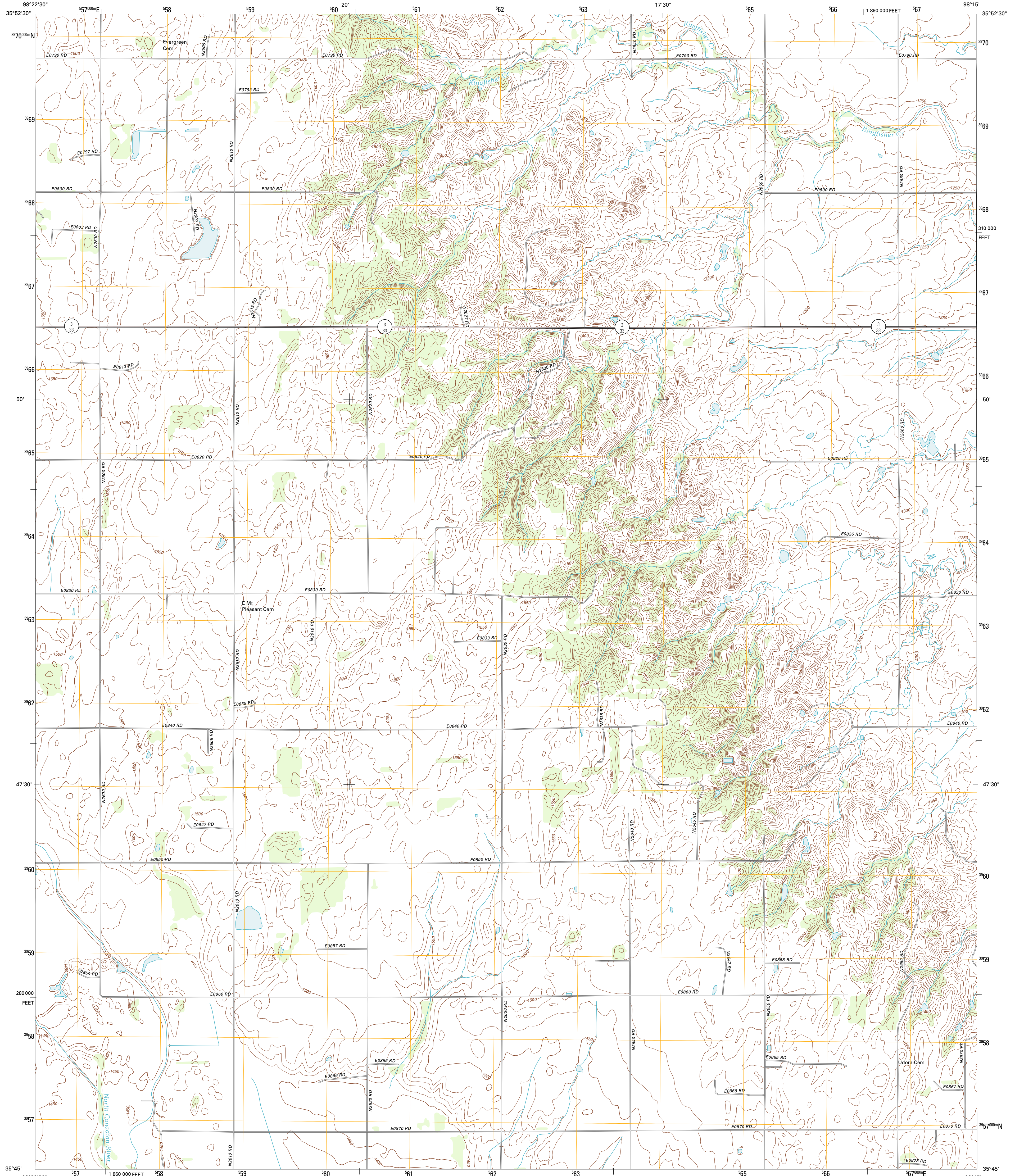




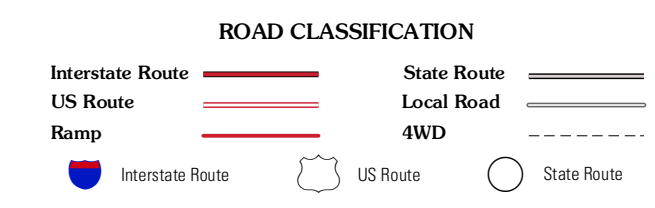
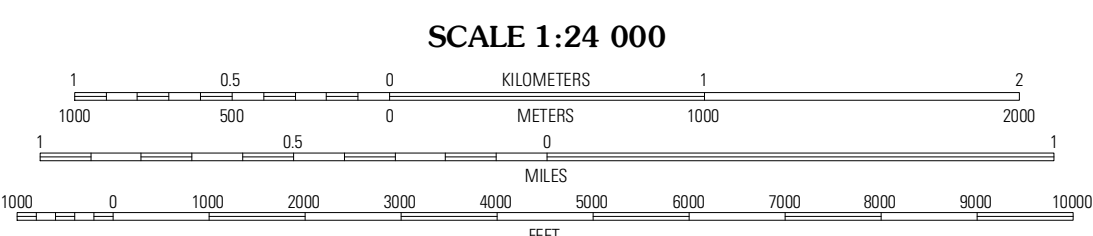
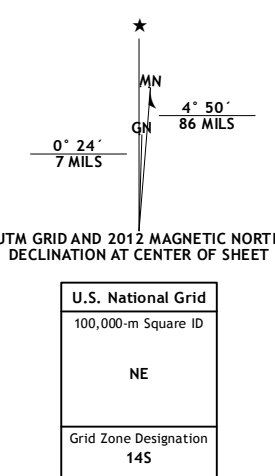
U.S. DEPARTMENT OF THE INTERIOR  
U. S. GEOLOGICAL SURVEY



WATONGA SE QUADRANGLE  
OKLAHOMA-BLAINE CO.  
7.5-MINUTE SERIES



Produced by the United States Geological Survey  
North American Datum of 1983 (NAD83)  
World Geodetic System of 1984 (WGS84). Projection and  
10 000-foot ticks: Oklahoma Coordinate System of 1983  
(north zone)



Imagery.....NAP, May 2010  
Roads.....©2006-2011 TomTom  
Names.....GNIS, 2012  
Hydrography.....National Hydrography Dataset, 2010  
Contours.....National Elevation Dataset, 2000  
Boundaries.....Census, IBWC, IBC, USGS, 1972 - 2012

SCALE 1:24 000  
CONTOUR INTERVAL 10 FEET  
NORTH AMERICAN VERTICAL DATUM OF 1988  
This map was produced to conform with the  
National Geospatial Program US Topo Product Standard, 2011.  
A metadata file associated with this product is draft version 0.6.6

QUADRANGLE LOCATION

|              |             |                 |
|--------------|-------------|-----------------|
| Watonga Lake | Hinchcock   | Loyal NW        |
| Watonga      | Watonga SE  | Omega           |
| Greenfield   | Geary North | Porcupine Butte |

WATONGA SE, OK  
2012

ADJOINING 7.5' QUADRANGLES