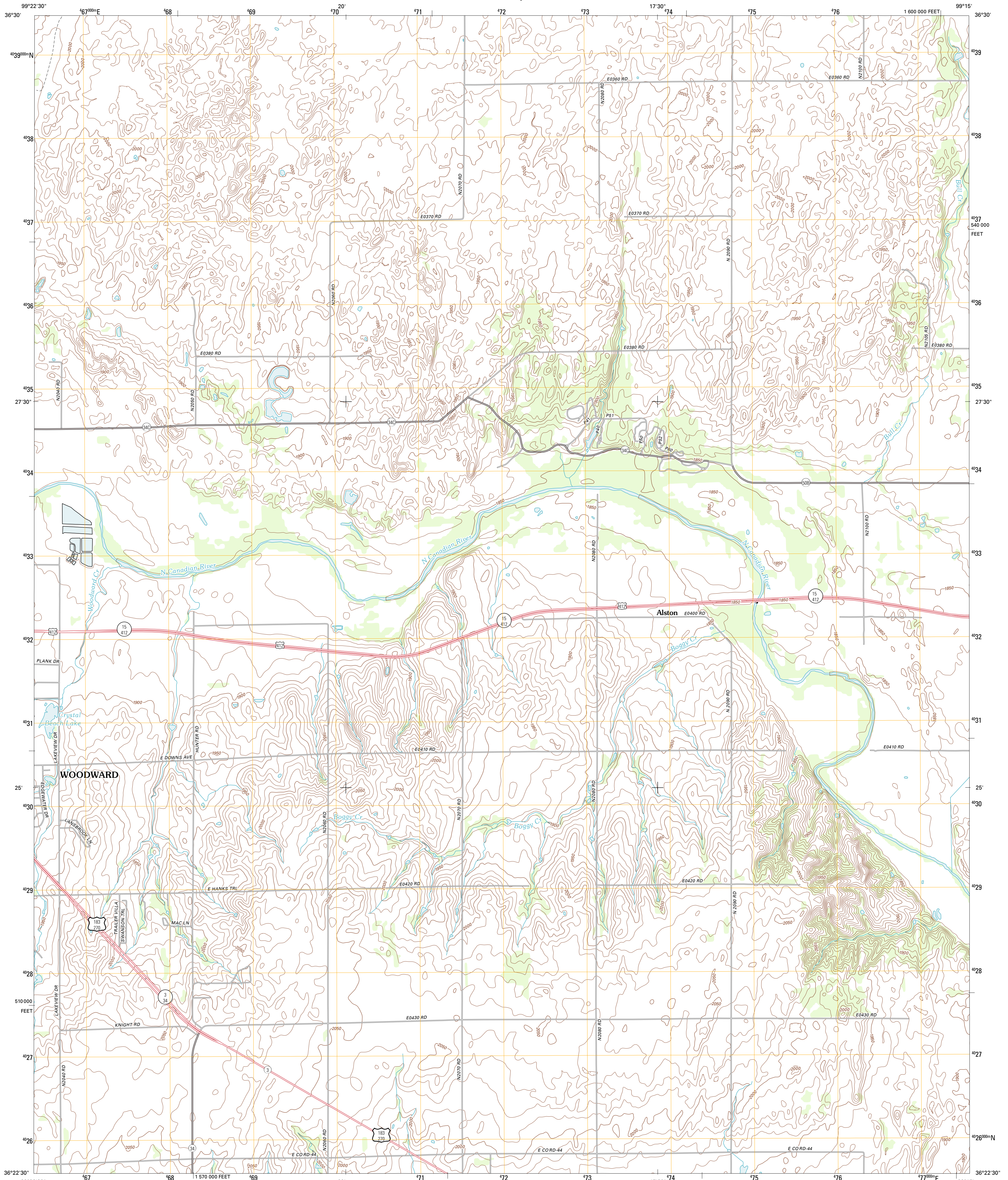




U.S. DEPARTMENT OF THE INTERIOR
U. S. GEOLOGICAL SURVEY

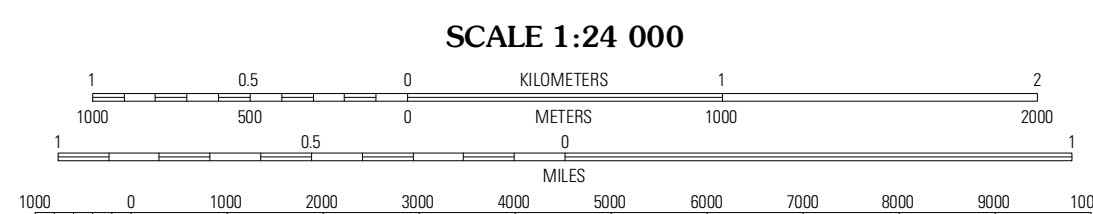
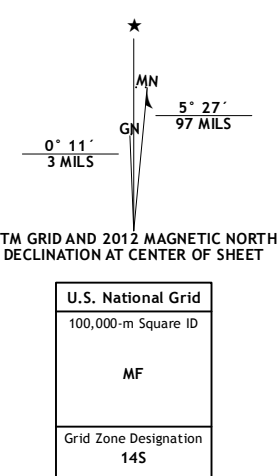


WOODWARD NE QUADRANGLE
OKLAHOMA-WOODWARD CO.
7.5-MINUTE SERIES

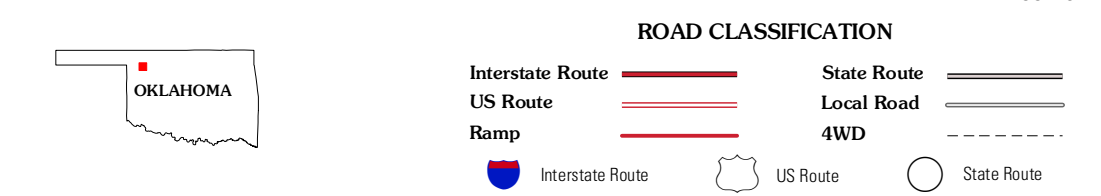


Produced by the United States Geological Survey
North American Datum of 1983 (NAD83)
World Geodetic System of 1984 (WGS84). Projection and
1 000-meter grid; Universal Transverse Mercator, Zone 14S
10 000-foot ticks; Oklahoma Coordinate System of 1983
(north zone)

Imagery.....NAP, April 2010 - May 2010
Roads.....©2006-2011 TomTom
Names.....GNIS, 2012
Hydrography.....National Hydrography Dataset, 2010
Contours.....National Elevation Dataset, 2007
Boundaries.....Census, IBWC, IBC, USGS, 1972 - 2012



CONTOUR INTERVAL 10 FEET
NORTH AMERICAN VERTICAL DATUM OF 1988
This map was produced to conform with the
National Geospatial Program US Topo Product Standard, 2011.
A metadata file associated with this product is draft version 0.6.6



QUADRANGLE LOCATION

Sleeping Bear Creek SW	Sleeping Bear Creek SE	Fairvalley SW
Woodward SW	Woodward NE	Mooreland SW
Woodward SW	Sharon	Mooreland SW

ADJOINING 7.5' QUADRANGLES

WOODWARD NE, OK
2012