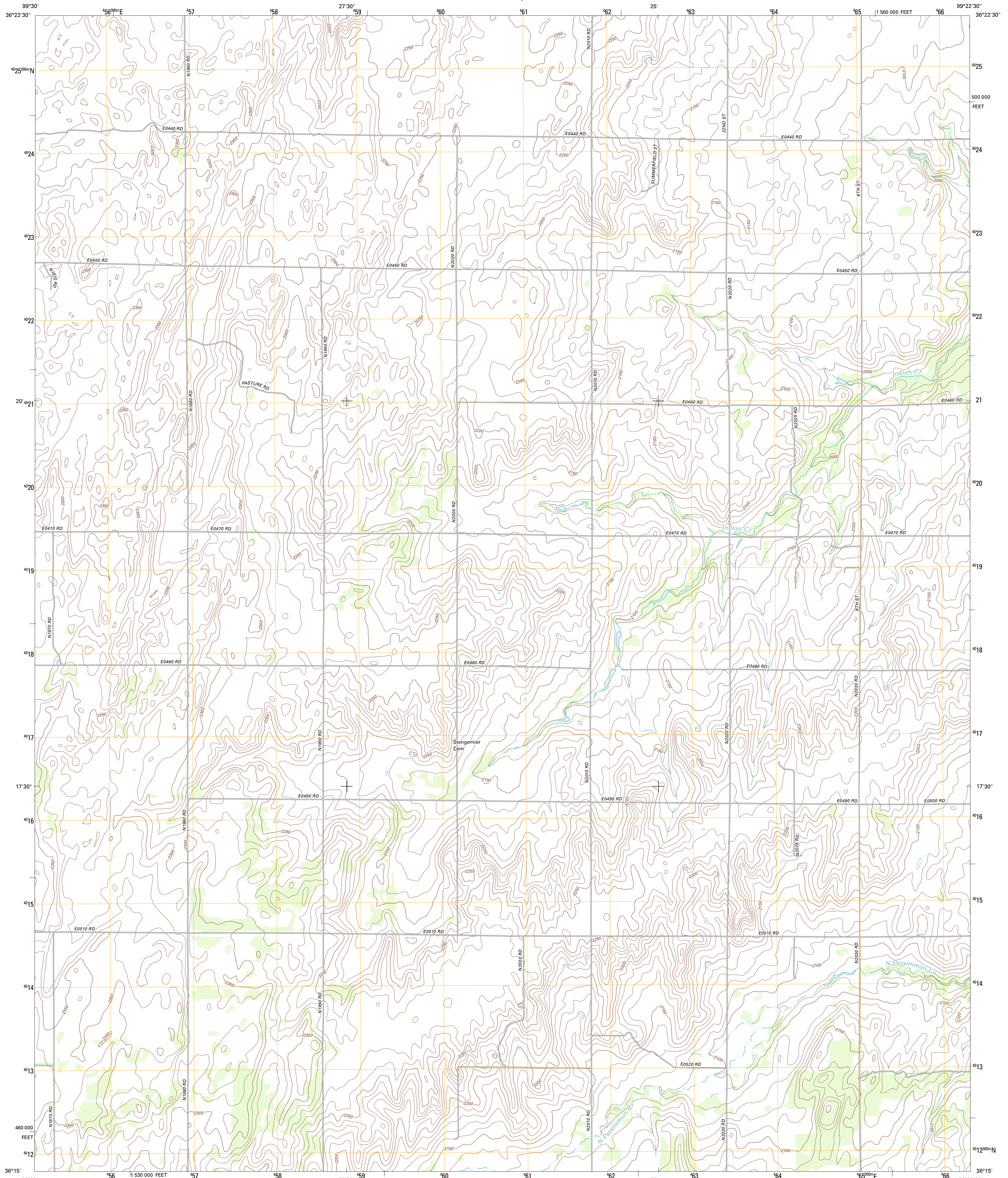




U.S. DEPARTMENT OF THE INTERIOR
U. S. GEOLOGICAL SURVEY

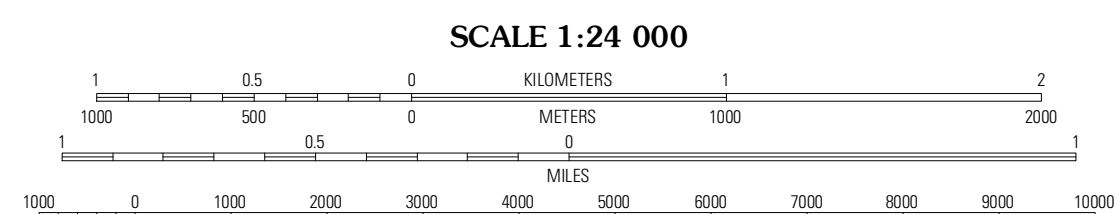
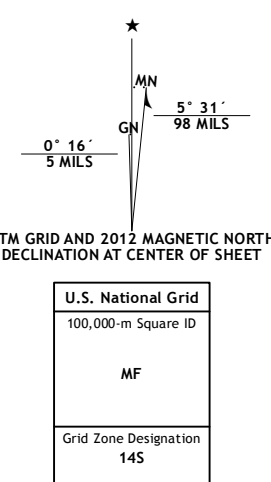


WOODWARD SW QUADRANGLE
OKLAHOMA-WOODWARD CO.
7.5-MINUTE SERIES



Produced by the United States Geological Survey
North American Datum of 1983 (NAD83)
World Geodetic System of 1984 (WGS84). Projection and
1 000-meter grid: Universal Transverse Mercator, Zone 14S
10 000-foot ticks: Oklahoma Coordinate System of 1983
(north zone)

Imagery: NADIP, April 2010
Roads: 2006-2011 TomTom
Names: GNIS, 2012
Hydrography: National Hydrography Dataset, 2010
Contours: National Elevation Dataset, 2007
Boundaries: Census, IBWC, IBC, USGS, 1972 - 2012



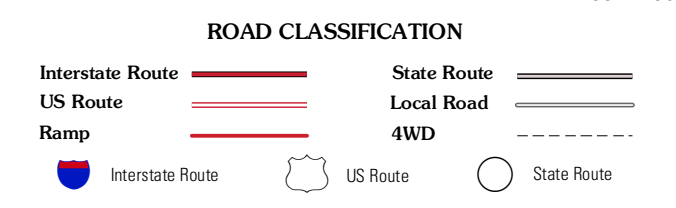
SCALE 1:24 000
CONTOUR INTERVAL 10 FEET
NORTH AMERICAN VERTICAL DATUM OF 1988

This map was produced to conform with the
National Geospatial Program US Topo Product Standard, 2011.
A metadata file associated with this product is draft version 0.6.6



QUADRANGLE LOCATION

Fargo	Woodward	Woodward NE
Fargo SE	Woodward SW	Sharon
Harmon	Vici NW	Vici



WOODWARD SW, OK
2012

ADJOINING 7.5 QUADRANGLES