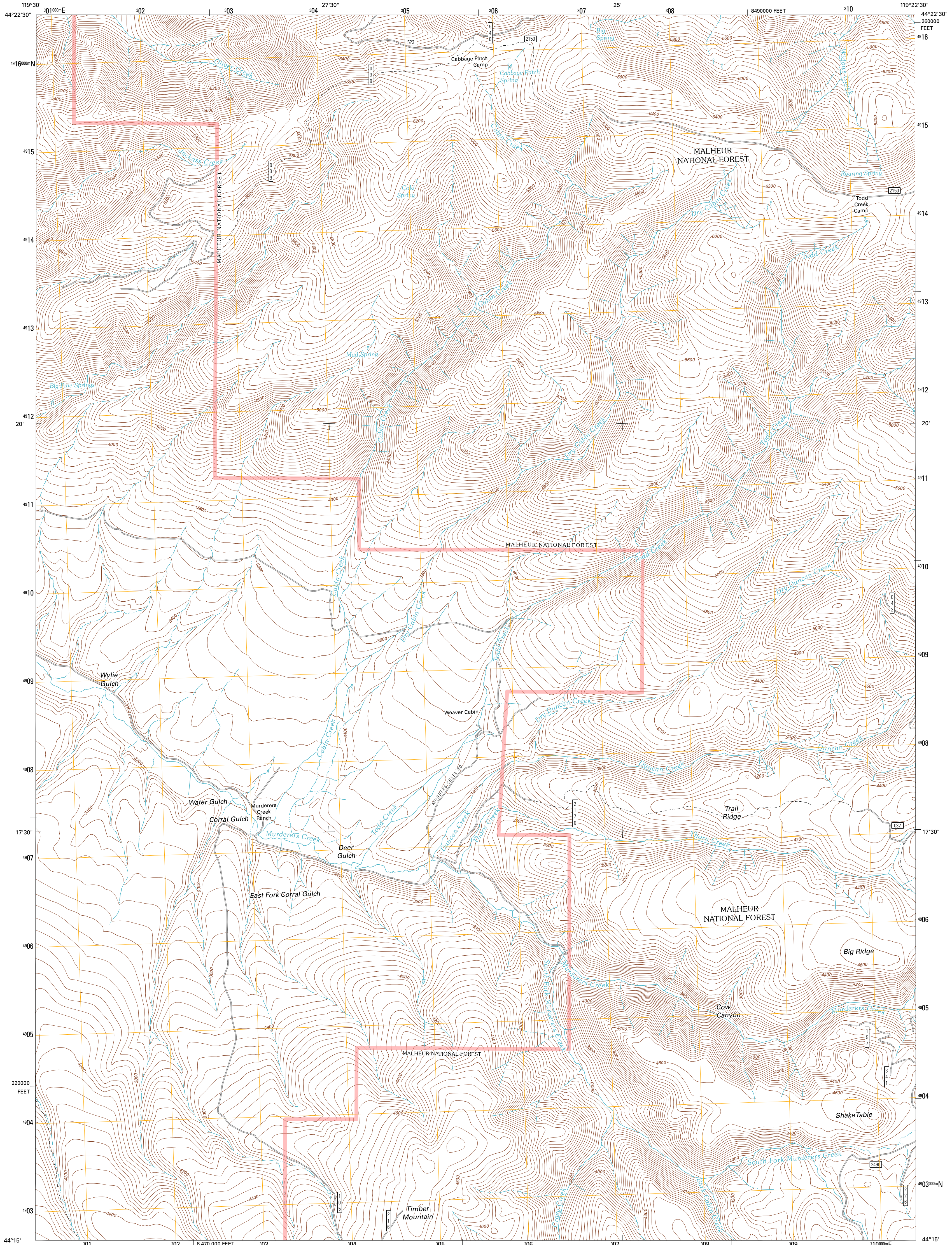




U.S. DEPARTMENT OF THE INTERIOR  
U. S. GEOLOGICAL SURVEY

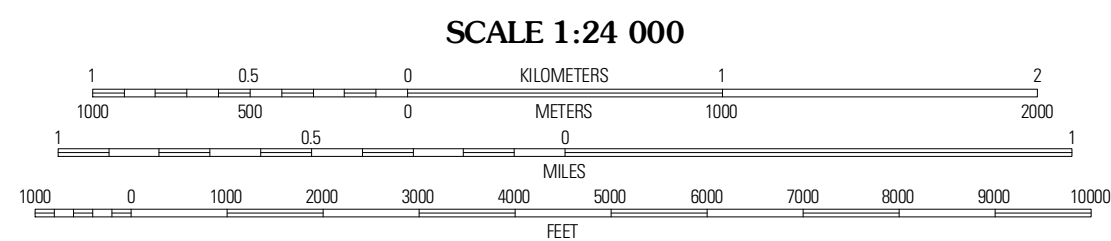
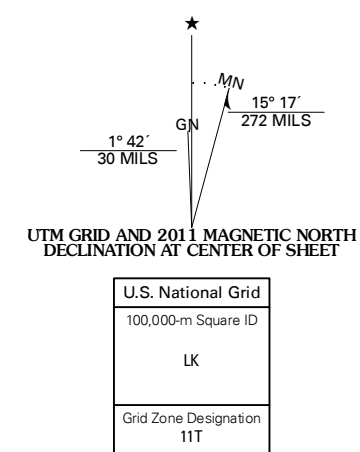


ALDRICH MOUNTAIN SOUTH QUADRANGLE  
OREGON-GRANT CO.  
7.5-MINUTE SERIES



Produced by the United States Geological Survey  
North American Datum of 1983 (NAD83)  
World Geodetic System of 1984 (WGS84). Projection and  
1 000-meter grid: Universal Transverse Mercator, Zone 11T  
10 000-foot ticks: Oregon Coordinate System of 1983 (north  
zone)

Imagery: NADP, July 2009  
Roads within US Forest Service Lands: FSTopo Data  
with Limited Forest Service updates, 2009  
Names: GNS, 2010  
Hydrography: National Hydrography Dataset, 2009  
Contours: National Elevation Dataset, 1999  
Boundaries: Census, IBWC, IBC, USGS, 1972 - 2010



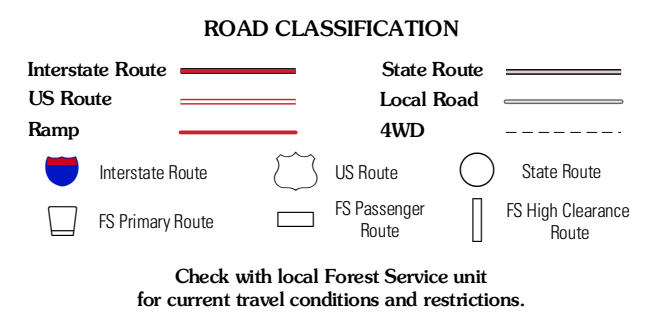
CONTOUR INTERVAL 40 FEET  
NORTH AMERICAN VERTICAL DATUM OF 1988  
This map was produced to conform with version 0.5.10  
of the USGS US Topo Product Standard.  
A metadata file associated with this product is draft version 0.5.16



QUADRANGLE LOCATION

Dayville	Aldrich Mountain North	Shop Gulch
Aldrich Gulch	Aldrich Mountain South	Big Wasel Springs
Suspee Butte	Crablock Butte	Flattail Mountain

ADJOINING 7.5 QUADRANGLES



ALDRICH MOUNTAIN SOUTH, OR  
2011